

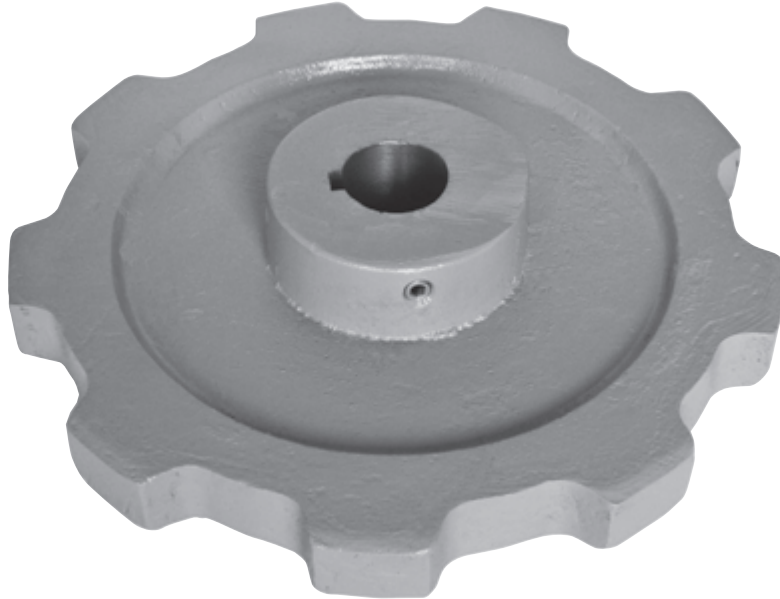
ENGINEERED CLASS SPROCKETS

PRODUCT	PAGE
INDEX	F-1
MADE-TO-ORDER CAPABILITIES	F-4
INSTANT SPLIT® SPROCKETS	F-5
SOLID AND SPLIT DETACHABLE HUBS	F-6
SHEAR PIN SPROCKETS	F-7 – F-9
ACCU-TORCH® SPROCKETS	F-10 – F-16
1.654 PITCH (62)	F-11
2.609 PITCH (78)	F-11
3.067 PITCH (1568)	F-12
3.075 PITCH (1030)	F-12
3.075 PITCH (82)	F-13
3.500 PITCH (238)	F-13
4.000 PITCH (124)	F-14
4.063 PITCH (1240)	F-14
4.500 PITCH (635)	F-15
5.000 PITCH (1207)	F-15
6.050 PITCH (132)	F-15
81X HOOKED TOOTH	F-16
STAR GEAR	F-16
CAST IRON SPROCKETS	F-17 – F-42
MTO Engineered Class	F-17
Select Size Availability	F-18
Types	F-19 – F-20
Information Needed to Quote	F-21
1.631 PITCH (55)	F-22
1.654 PITCH (62)	F-22
2.308 PITCH (67)	F-23
2.609 PITCH (78)	F-23
4.000 PITCH (94R)	F-24
4.000 PITCH (95R)	F-24
4.000 PITCH (102B)	F-24
5.000 PITCH (H102)	F-25
4.040 PITCH (102.5)	F-25
3.075 PITCH (103)	F-25
6.000 PITCH (H104)	F-26
6.000 PITCH (W106)	F-26
6.000 PITCH (S110)	F-26
6.000 PITCH (W110)	F-26
4.760, 7.240 PITCH (111SP)	F-27
4.760 PITCH (111)	F-27
8.000 PITCH (WD112)	F-27
8.000 PITCH (WD116)	F-27
6.000 PITCH (WD119)	F-28
6.000 PITCH (WD120)	F-28
9.000 PITCH (H121)	F-28
8.000 PITCH (WD122)	F-28
9.000 PITCH (WD123)	F-28
4.000 PITCH (H124)	F-29
4.000 PITCH (130)	F-29

ENGINEERED CLASS SPROCKETS

PRODUCT	PAGE
CAST IRON SPROCKETS (CONT.)	F-17 – F-42
6.050 PITCH (132)	F-30
3.000 PITCH (183)	F-30
4.000 PITCH (188)	F-31
4.000 PITCH (194)	F-31
6.000 PITCH (196)	F-32
6.000 PITCH (197)	F-32
3.031 PITCH (348)	F-32
4.031 PITCH (458)	F-33
4.031 PITCH (468)	F-33
8.000 PITCH (WD480)	F-33
4.000 PITCH (483)	F-33
2.563 PITCH (520)	F-34
4.000 PITCH (531)	F-34
6.000 PITCH (625R)	F-34
2.250 PITCH (667)	F-34
6.031 PITCH (678)	F-35
6.031 PITCH (698)	F-35
6.000 PITCH (CS720S)	F-35
6.000 PITCH (720S)	F-36
6.000 PITCH (A730)	F-36
6.000 PITCH (823)	F-37
4.000 PITCH (825)	F-37
6.000 PITCH (830)	F-37
6.000 PITCH (844)	F-38
6.000 PITCH (856)	F-38
9.000 PITCH (E922)	F-38
9.000 PITCH (F922)	F-38
9.000 PITCH (F933)	F-39
6.000 PITCH (F951)	F-39
9.000 PITCH (B963R)	F-39
9.000 PITCH (D963R)	F-39
9.000 PITCH (E963R)	F-40
9.000 PITCH (F963R)	F-40
9.031 PITCH (998)	F-40
3.075 PITCH (1030)	F-40
4.040 PITCH (1113)	F-41
4.000 PITCH (1120)	F-41
6.000 PITCH (1131)	F-41
12.000 PITCH (F1222)	F-41
4.063 PITCH (1240)	F-42
6.000 PITCH (2180)	F-42
12.000 PITCH (4850)	F-42
2.500 PITCH (9250)	F-42
TRACTION WHEELS	F-43 – 45
SEGMENTAL HUBS	F-46
SEGMENTAL RIM SPROCKETS	F-47
KEY SEATING AND SET SCREWS	F-48

Engineered Class Sprockets Steel Cut and Cast Iron



Martin's Engineering Class Sprockets are manufactured to the highest quality standards. *Martin* offers Engineering Class Sprockets in both Flame Cut (Accu-Torch) and Cast Iron.

ASME Standard Torch Profiles – Elongated Root Design promotes a self-cleaning effect of the root to keep your demanding applications moving.

These sprockets are available in A , B,

and C Hub Types:

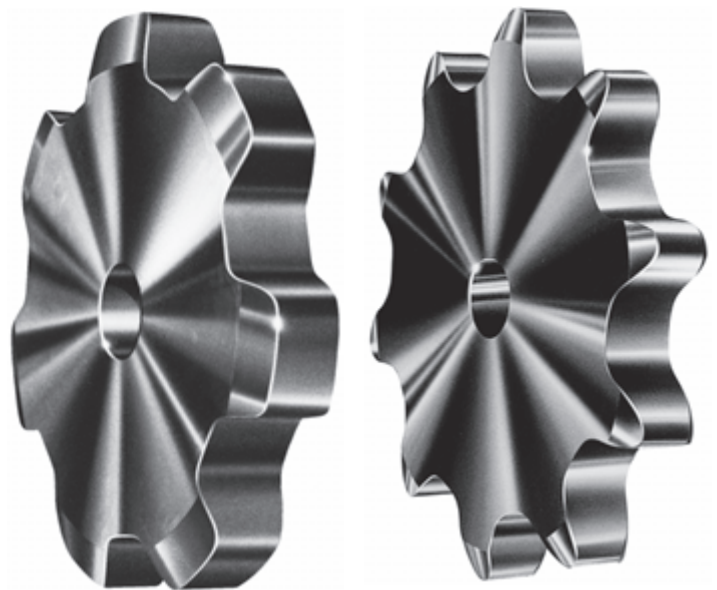
A style (no hub) typically used in weld-on applications.

B style (hub one side) is used in applications where clearance width is narrow (these are typically more economical than C style).

C style (hub both sides) which is used in applications where B style is not wide enough to withstand torques produced by drive.

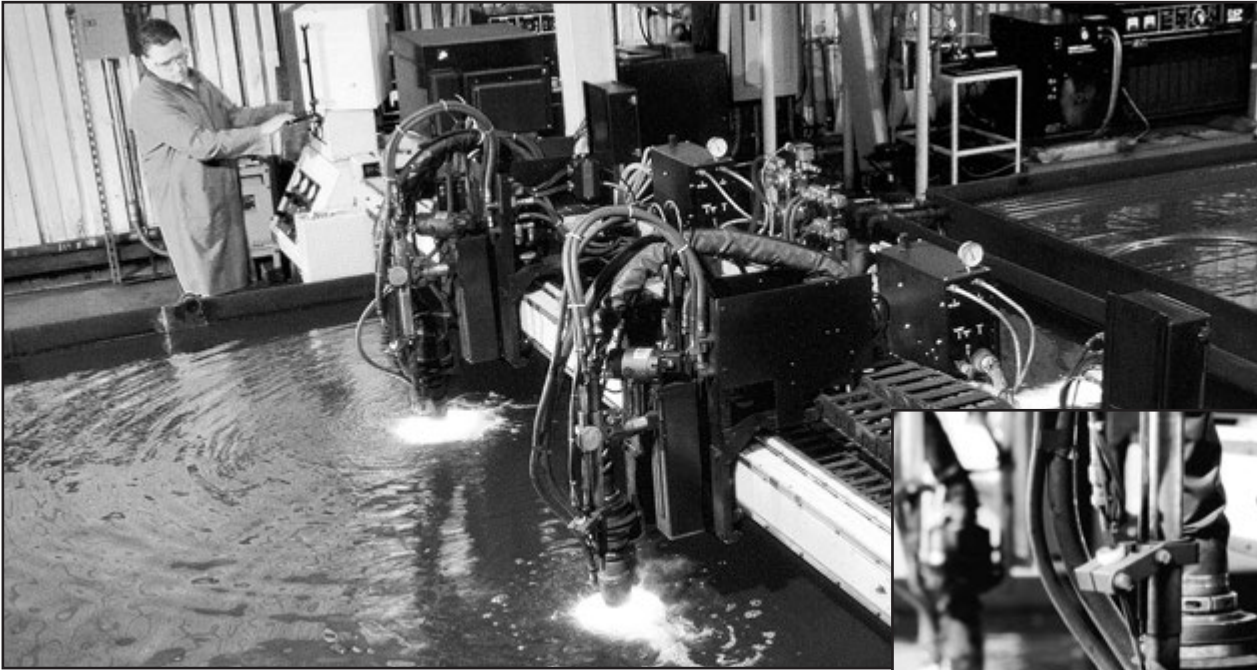
Martin also offers Split Style construction. The split style allows for easy removal or installation. They can be used in nearly all applications. The shaft/keyway security is much tighter than a typical setscrew mount.

Flame hardening, induction heat treating, and chilled rim are available for longer wear life.



Steel Accu-Torch® Sprockets for Engineering Chain

Martin



Martin Accu-Torch® steel sprockets are available for virtually all engineering class chains in style A, B, and C. Also available as split with welded hub and split or solid detachable hub. May also be furnished as shear pin type. Send us your inquiries.

Where possible please specify chain number, pitch diameter, number of teeth, bore and keyway size, and hub style required.

Accu-Torch® sprockets are not intended to replace cut tooth roller chain sprockets.

MTO Engineered Class Sprockets



**ALL STEEL
WIDE DRAG SPROCKET**



**SPLINED MUD
RELIEF
ACCU-TORCH®**

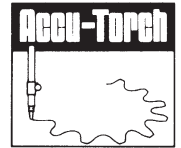


**SPECIAL ACCU-TORCH®
FOR SEWAGE TREATMENT**



**10 FT. DIAMETER ACCU-TORCH®
FOR PAPER MILLS**

For quality and dependable service, call *Martin* for all your made-to-order requirements.



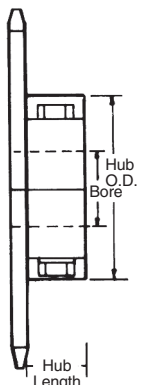
Martin Instant Split[®]/Accu-Torch[®] sprockets offer unlimited design and are simply installed with a hand wrench... greatly reducing costly downtime.



Accu-Torch[®] Size for Instant Split[®] Hubs

Split Hub Number	Bore	Minimum Number of Teeth										
		Chain Number/Pitch										
		62 1.654	78 2.609	1568 3.067	1030 3.075	82 3.075	238 3.500	124 4.000	1240 4.063	635 4.500	1207 5.000	132 6.050
S-1	3/4"-1 1/2"	9	7									
S-2	1 1/8"-2 1/4"	12	8	8	8	7	8	6	7			
S-3	2"-3"	15	10	10	9	9	9	7	8	8		
S-4	2 3/4"-4"	18	12	12	11	11	10	9	9	9	8	
S-5	3 3/4"-5"	21	14	13	13	12	12	10	10	10	9	7
S-6	4 3/4"-6"	23	15	14	14	13	13	11	11	11	10	8
S-7	5 3/4"-7"	27	18	16	16	15	15	12	13	12	11	9
S-8	6 3/4"-8"	31	20	18	18	17	16	14	14	14	13	10

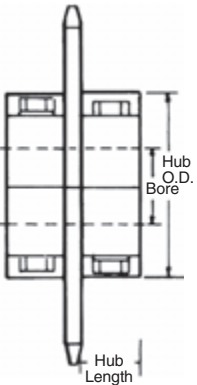
Total list price of *Martin* Split-Sprocket is simply the hub price plus the plate price.



Pricing Example Style B
1030B25 Split with S-3 Hub,
2 15/16" Bore, KW & SS

S-3 Hub
1030A25 Plate

[See Hub List](#)
[See Plate List](#)
[Total Price List](#)



Pricing Example Style C
1030C25 Split with S-3 Hubs,
2 15/16" Bore, KW & SS

Two S-3 Hubs
1030A25 Plate

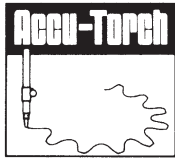
[See Hub List](#)
[See Plate List](#)
[Total Price List](#)

Instant Split Hubs are for use
with Plate Sprockets only.

Hub Number	Bore	Hub O.D.	Hub★ Length	Bolts	Weight Lbs.
S-1	3/4" - 1 1/2"	3 3/8"	1"	3/8" x 2 1/4"	1.8
S-2	1 1/8" - 2 1/4"	4 3/8"	1 1/4"	1/2" x 3"	4.1
S-3	2" - 3"	6"	1 3/8"	3/8" x 4 1/2"	8.4
S-4	2 3/4" - 4"	7 7/8"	1 1/2"	3/8" x 5 1/2"	14.4
S-5	3 3/4" - 5"	9 1/4"	2"	1" x 6"	27.8
S-6	4 3/4" - 6"	10 3/4"	2 1/4"	1" x 6"	35.4
S-7	5 3/4" - 7"	12 1/2"	2 1/2"	1" x 7"	64.4
S-8	6 3/4" - 8"	14 1/2"	3"	1" x 8"	98.5

★Add hub length to plate thickness to determine length thru bore.

For style C, add hub length x 2.



Solid and Split Detachable Hubs



TYPE D SPROCKETS — STOCK DETACHABLE HUBS

Type D sprockets consist of a Type A plate sprocket bolted to a detachable hub. A solid or split plate sprocket may be assembled to a solid or split hub. When ordering a Type D sprocket, be sure to select a plate sprocket large enough to allow chain clearance over the hub flange diameter, dimension D.

Bolt holes of Type D hubs are drilled for interchangeability. Speed ratios may be changed simply by removing the plate sprocket and substituting another with a different number of teeth. When worn, the sprocket may be reversed to use the unworn tooth surfaces, increasing the life of the sprocket.

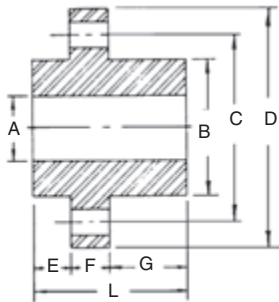
Solid Hubs - Steel — Dimensions (Inches)

Hub Number	Bore Range A		Hub Diameter B	Bolt Circle C	Flange Diameter D	Bolt Holes		E	F	G★	L
	Stock	Maximum				Number	Bolt Size				
101	5/8	1	2 1/2	3	4 1/4	6	3/8	1/2	3/8	1 1/2	2
102	1 1/16	2	3	4	5	6	7/16	1/2	1/2	1 1/2	2 1/2
103	1 3/16	2 1/2	4	5 1/16	6	6	1/2	1/2	3/8	1	2 3/4
104	2 1/16	3	4 1/2	5 1/2	7	6	5/8	3/4	1/2	2	3 1/4
105	2 3/16	3 1/4	5	6 1/4	7 1/2	6	3/4	3/4	1/2	2 1/2	4
106	2 5/16	3 3/4	5 1/2	7	8 1/2	6	3/4	3/4	1	2 1/2	4
107	3 1/16	4	6	7 1/2	9	6	7/8	3/4	1 1/4	2 3/4	4 1/4
108	3 3/16	4 1/2	7	8 3/8	10 3/8	6	7/8	3/4	1 1/2	2 1/2	4 1/2
109	4 1/16	7	10 1/2	13	15 1/2	6	1	3/4	1 1/2	2 3/4	5

★Maximum bores shown are maximum bores with standard keyseat and setscrew.

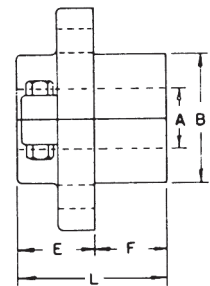
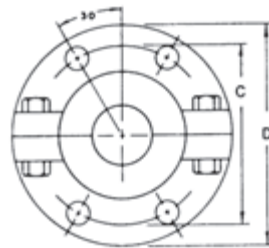
ALTERATION CHARGES

See current list price and discount sheet for alteration charges.



SOLID HUBS — STEEL

The List Price as shown in the List Price Book is for hub with stock bore. To obtain the price of a complete Type D sprocket add the List Price of hub plus alteration charges and the List Price of the desired Type A plate sprocket, including rebore, bolt hole drilling, and splitting charge if desired.



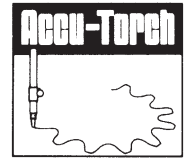
SPLIT HUBS — CAST IRON

Split Hubs - Cast Iron — Dimensions (Inches)

Hub Number	Bore Range A		Hub Diameter B	Bolt Circle C	Flange Diameter D	Bolt Holes		E	F★	L
	Stock	Maximum				Number	Bolt Size			
102S	1 1/16	1 1/2	3	4	5	4	7/16	1 3/4	1 1/2	3 3/8
103S	1 3/16	2 1/4	4	5 1/16	6	4	1/2	2	1 1/2	3 1/2
104S	2 1/16	2 1/2	4 1/2	5 1/2	7	4	3/8	2 1/4	1 1/4	4
105S	2 3/16	2 3/4	5	6 1/4	7 1/2	4	3/8	2 1/4	1 1/4	4 1/8
106S	2 5/16	3 1/4	5 1/2	7	8 1/2	4	3/8	2 1/2	2	4 1/2
107S	3 1/16	3 1/2	6	7 1/2	9	4	3/8	3	1 1/4	4 3/8
108S	3 3/16	4	7	8 3/8	10 3/8	4	3/8	3 3/8	1 1/4	5 1/8
109S	4 1/16	6	10 1/2	13	15 1/2	4	1	4 1/8	1 1/4	5 3/8

Maximum bores shown are maximum bores with standard keyseat and setscrew.

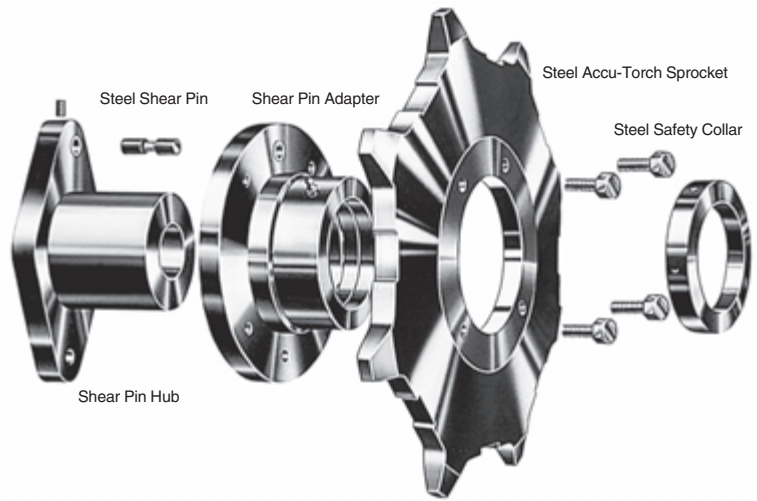
★ Plate thickness of Accu-Torch not recommended if larger than dimension listed.



Shear pin sprockets provide simple, dependable protection against expensive machinery damage caused by overloads or jamming. Torque is transmitted by a single pin, necked to shear when the safe load is exceeded. When an overload occurs, the pin shears, disconnecting the drive immediately.

The Bolt-On Shear Pin Adapter converts any plate sprocket into a stock shear pin sprocket allowing immediate delivery of stock shear pin sprockets.

Selection guide on page F-9 gives complete procedure to select the proper shear pin assembly.



Stock Shear Pin Assemblies

Shear Pin Assembly Number	Hub Bore Range	Shear Pin Hub	Shear Pin Adapter
		Catalog Number	Catalog Number
SP-17	1" & UNDER	SPH-17	SPA-17
SP-18		SPH-18	SPA-18
SP-19		SPH-19	SPA-19
SP-20	1 ¹ / ₁₆ - 1 ¹ / ₄	SPH-20	SPA-20
SP-21	1 ¹ / ₁₆ - 2	SPH-21	SPA-21
SP-22		SPH-22	SPA-22
SP-23	2 ¹ / ₁₆ - 2 ¹ / ₂	SPH-23	SPA-23
SP-24	2 ¹ / ₁₆ - 2 ³ / ₄	SPH-24	SPA-24
SP-25		SPH-25	SPA-25
SP-26	3 ¹ / ₁₆ - 3 ¹ / ₂	SPH-26	SPA-26
SP-27	3 ³ / ₁₆ - 4	SPH-27	SPA-27
SP-28		SPH-28	SPA-28
SP-29	4 ¹ / ₁₆ - 5	SPH-29	SPA-29
SP-30	4 ¹ / ₁₆ - 5 ¹ / ₂	SPH-30	SPA-30
SP-31		SPH-31	SPA-31

NOTES ON PRICING:

Shear Pin Hub List Price includes any finished bore within the stated range, standard keyway and setscrew, hardened steel shear pin bushing.

Shear Pin Adapter List Price includes the shear pin bushing, grease fitting.

Complete Assembly List Price includes all components of the shear pin assembly as described above. Total list price of any shear pin sprocket is the complete assembly list price plus the list price of the desired plate sprocket (from tables of stock sprocket list prices).

Replacement Sprockets should be priced as altered stock sprockets directly from List Price and Alteration Charge tables.

Shear Pin Components may be ordered separately and will be treated as stock items when conforming to standard specifications and descriptions above.

PRICING EXAMPLES:

1. Stock Shear Pin Accu-Torch Sprocket

To price a 25 tooth shear pin sprocket for 1030 chain (1030SP25) using SP-26 shear pin assembly with 3³/₁₆" bore, standard keyway and setscrew:

SP-26 Assembly	See List Price Sheet
1030A25	

2. Shear Pin Adapter and Sprocket for Existing Hub

To price a "Bolt-on" shear pin adapter and sprocket to replace the sprocket part of existing 78A12 using SP-20 hub:

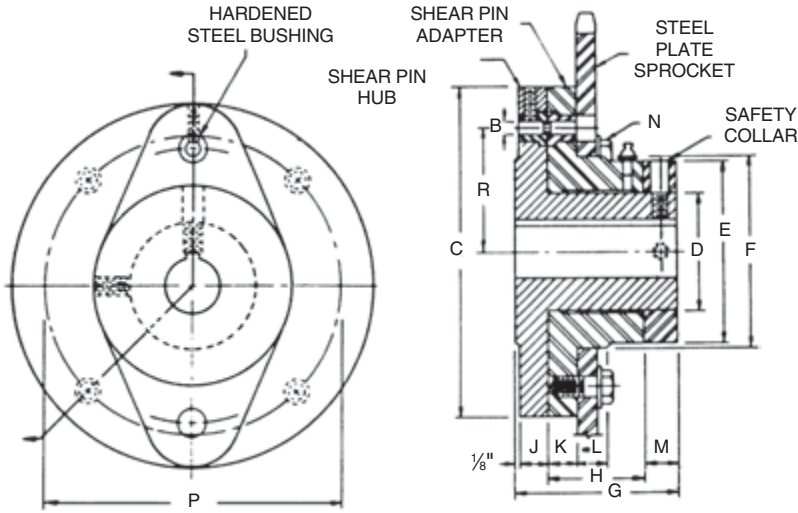
SPA-20 Adapter	See List Price Sheet
78A12	

Shear Pin Sprockets can also be furnished in other standard styles or made to customers specifications. Price on application.

It is important that torque requirement for selected hub be checked in torque rating on page F-9 and neck diameter of shear pins be specified.



Bolt-On Shear Pin Accu-Torch® Sprockets



Sprocket Sizes for Stock Shear Pin Assemblies

Shear Pin Assembly Number	Hub Bore Range	Minimum Number of Teeth															
		Chain Number/Pitch															
		62 1.654	78 2.609	1568 3.067	1030 3.075	82 3.075	238 3.500	124 4.000	1240 4.063	635 4.500	1207 5.000	132 6.050					
SP-19	1 1/16 - 1 1/2	16															
SP-20	1 1/16 - 1 3/8	17	12														
SP-21	1 3/16 - 2	19	13				11										
SP-22	2 1/16 - 2 1/4	21	14	13	13	12	12										
SP-23	2 3/16 - 2 1/2	22	15	14	13	13	12	10									
SP-24	2 1/2 - 2 3/4	25	16	15	15	14	13	11	12	11							
SP-25	2 3/16 - 3	26	18	16	16	15	14	12	13	12							
SP-26	3 1/16 - 3 1/2	28	19	17	17	16	15	13	13	13							
SP-27	3 3/16 - 4	32	21	19	19	18	17	14	15	14							
SP-28	4 1/16 - 4 1/2	34	22	20	20	19	18	15	15	15							
SP-29	4 3/16 - 5	36	24	21	21	20	19	16	16	15							
SP-30	4 1/2 - 5 1/2	41	27	24	23	23	21	18	18	17							
SP-31	5 1/16 - 6	45	30	26	25	25	23	20	20	19							

AVAILABLE AS MADE TO ORDER
CHECK YOUR NEAREST MARTIN FACILITY

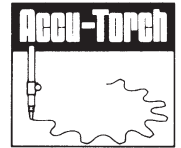
AVAILABLE AS MADE TO ORDER
CHECK YOUR NEAREST MARTIN FACILITY

Shear Pin Assembly Dimensions (Inches)

Shear Pin Assembly Number	Shear Pin			Diameters			Length Thru			Hub Flange Thickness	Adapter Flange Thickness	Sprocket Seat Width	Bolts		Weight (lbs.)	
	Radius	Pin Diameter	Flange	Shear Pin Hub	Adapter Hub & Collar	Sprocket Seat	Shear Pin Hub	Adapter	Collar				Number & Size	Bolt Circle	Shear Pin Hub	Shear Pin Adapter
SP-19	2 1/16	3/16	6 3/4	2 1/4	4	4 1/2	3 3/16	2 1/2	5/8	1 1/16	1 1/16	1 1/16	4 - 1/2"	5 1/2	7.2	7.6
SP-20	3	3/8	7 3/4	3 1/4	4 1/4	4 3/4	4 3/16	2 1/2	3/4	1 3/16	1 3/16	1 1/16	4 - 1/2"	6 1/4	11.0	11.9
SP-21	3 3/16	7/16	8 3/4	3 3/4	5 1/4	5 3/4	4 9/16	2 3/4	7/8	1 5/16	1 5/16	1 1/16	4 - 3/8"	7	16.2	16.9
SP-22	3 3/16	1/2	9 3/4	4 1/4	6 1/4	6 3/4	5 3/16	3	1	1 1/16	1 1/16	1 1/16	4 - 3/8"	8	23.3	24.5
SP-23	4	1/2	10	4 1/2	6 1/2	6 3/4	5 11/16	3 1/2	1	1 1/16	1 1/16	1 1/16	4 - 5/8"	8 3/4	26.3	27.7
SP-24	4 3/8	5/8	11 1/2	5	7	7 3/4	6 3/16	3 3/4	1 1/8	1 1/16	1 1/16	1 1/16	4 - 5/8"	9 3/4	40.4	38.6
SP-25	4 3/8	3/4	12 1/2	5 1/2	8	8 3/4	6 3/8	4 1/4	1 1/4	1 1/16	1 1/16	1 1/16	6 - 5/8"	10 1/4	52.6	53.6
SP-26	5 1/16	1 1/16	13 1/2	6 1/4	8 3/4	8 3/4	7 13/16	4 3/4	1 3/4	1 1/16	1 1/16	1 1/16	6 - 5/8"	11 1/4	66.7	66.8
SP-27	6 1/16	3/4	15 1/2	7	10	10 1/4	8 3/16	5 1/2	1 1/2	1 1/16	1 1/16	1 1/16	6 - 5/8"	12 3/4	96.5	100.0
SP-28	6 1/16	7/8	16 1/4	7 3/4	10 3/4	10 3/4	9 1/16	6 1/2	1 1/2	1 1/16	1 1/16	1 1/16	6 - 3/4"	13 1/2	125.0	115.0
SP-29	7 1/8	7/8	17 1/2	8 3/4	12	12 1/4	10 11/16	7	1 3/4	1 13/16	1 1/16	1 1/16	6 - 1"	14 3/4	160.0	150.0
SP-30	8 1/8	1	20 1/4	9 3/4	13 3/4	13 3/4	11 11/16	7 1/2	2	2 1/16	1 1/16	1 1/16	6 - 1"	17	215.0	207.0
SP-31	8 3/8	1 1/8	22 1/2	10 3/4	15	15 1/4	12 3/16	8 3/4	2 1/4	2 1/16	1 1/16	1 1/16	6 - 1"	18 3/4	318.0	265.0



Bolt-On Shear Pin Accu-Torch® Sprockets



Shear Pin Sprocket Selection

1. The shear pin assembly required is determined by the shaft size. Select the smallest shear pin assembly which will accommodate the required bore. Table on page 130 contains the bore ranges and minimum sprocket sizes which allow chain clearance over the shear pin assembly flange.
2. Using one of the following formulas, compute the torque load the pin must transmit and enter the torque rating table below to obtain the proper shear pin neck diameter.

$$T = \frac{HP \times 63,025 \times 1.5}{RPM} \quad \text{or} \quad T = \frac{D \times CP \times 1.5}{2}$$

or T = Output of reducer x speed ratio of chain drive x 1.5

Where:

- T = Torque in pound inches
- HP = Horsepower at sprocket
- RPM = Sprocket speed
- D = Pitch diameter of sprocket
- CP = Chain pull in pounds
- 1.5 = Safety factor for starting load

EXAMPLE:

1. Determine the shear pin assembly and pin neck diameter to transmit 20 horsepower at 67 RPM with a 36 tooth, No. 62 sprocket on a 2¹⁵/₁₆" shaft.

(1) Referring to Table I, shear pin assembly SP-25 is required for a 2¹⁵/₁₆" bore. The 36 tooth sprocket is well above the minimum size.

(2) Torque and neck diameter:

$$T = \frac{HP \times 63,025 \times 1.5}{RPM}$$

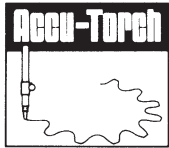
$$T = \frac{20 \times 63,025 \times 1.5}{67} = 28,200 \text{ lb. in.}$$

Referring to Table II under SP-25, a pin necked to 3/8" shows a torque rating of 29,810 lb. in., which exceeds the 28,200 lb. in. required.

(3) Order: 62SP36, SP-25 assembly with 2¹⁵/₁₆" bore and 3/8" pin neck diameter.

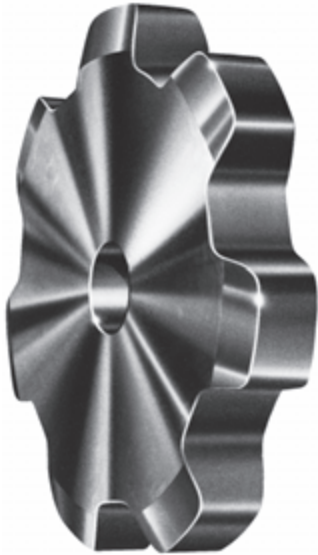
Shear Pin Torque Ratings

Shear Pin Neck Diameter (Inches)	Torque Rating — Pound Inches												
	Shear Pin Hub Number												
	SP19	SP20	SP21	SP22	SP23	SP24	SP25	SP26	SP27	SP28	SP29	SP30	SP31
3/32	1022	1204	1323	1556	1603								
1/8	1752	2064	2268	2616	2748								
5/32	2774	3268	3591	4142	4351	4750							
3/16	3942	4944	5103	5886	6183	6750	7317						
7/32	5402	6364	6993	8066	8473	9250	10027						
1/4	7300	8600	9450	10900	11450	12500	13550	15200	17300	18400			
9/32	9052	10664	11718	13516	14198	15500	16802	18848	21452	22816			
5/16	11096	13072	14364	16568	17403	19000	20596	23140	26296	27968	30932		
11/32		15824	17388	20056	21068	23000	24932	27968	31832	33856	37440		
3/8		18920	20790	23980	25190	27500	29810	33440	38060	40480	44770	51040	
13/32			24570	28340	29170	32500	35230	39520	44980	47840	52910	60320	
7/16			28350	32700	34350	37500	41650	45600	51900	55200	61050	69600	
15/32				37060	38930	42500	46070	51680	58820	62560	69190	78880	
1/2				42728	44884	49000	53116	59584	67816	72128	79772	90944	
17/32						55000	59620	66880	76120	80960	89540	102080	
9/16						62000	67280	75392	85808	91264	100936	115072	
19/32							73220	82080	93420	99360	109890	125280	136890
5/8							82800	92720	105530	112240	124135	141520	154635
21/32								103360	117640	126120	138380	157760	172380
11/16								112480	128020	136160	150590	171680	187590
23/32									138400	147200	162800	185600	202800
3/4									152240	161920	179080	204160	223080
25/32											195360	222720	243360
13/16											211640	241280	263640
27/32											227920	259840	283920
7/8											244200	278400	304200
29/32												296960	324480
15/16												301600	329550
31/32												338720	370110
1												371200	405600
1 1/16													446160
1 1/8													507000



Flame Cut Sprockets For Engineering Chains

Martin

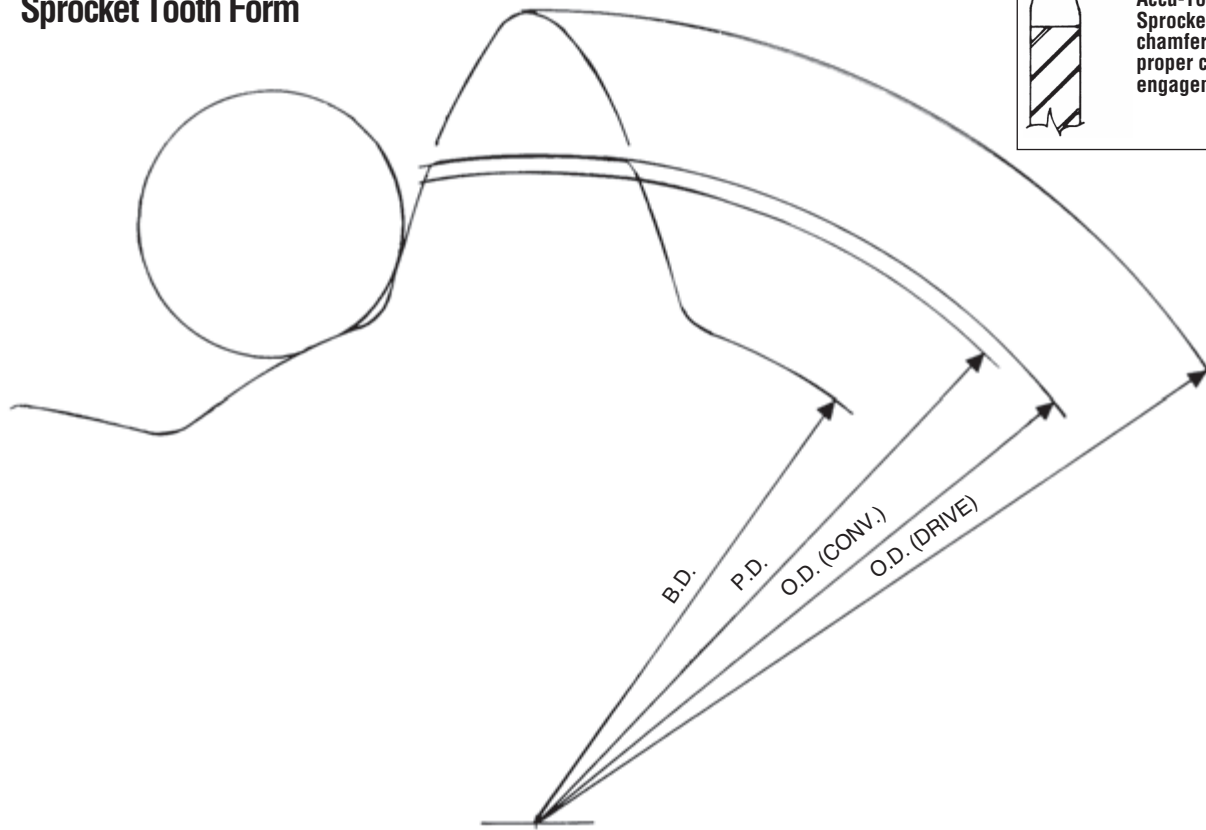
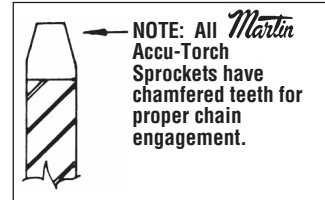


Conveyor Style Tooth for Chains:
78 — 82 — 124 — 132



Driver Style Tooth for Chains:
62 — 1568 — 1030 — 238 — 1240 — 635 — 1207

Typical "Drive" & "Conveyor" Sprocket Tooth Form

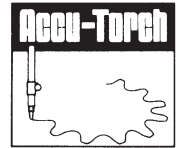


Accu-Torch Sprockets are not intended to replace cut tooth roller chain sprockets.

NOTE: For style other than Type "C" or Type "A", or Tooth Size not shown, consult factory for price. See Current List Price Sheet for Stock Pricing.



Flame Cut Sprockets for Engineering Chains



62 FLAME CUT SPROCKETS FOR CHAINS:

62 CAST — 2 — 062 — 62 Steel — 62A — HF 62 A — 62 H — H 62 — 072 — 72½ — 162 — R 362 — RR 362 — R432 — RR 432 — 962 — LXS 627 — IS 620 — 162 R — US 622 — 378 R — 402 RX — US 620

Type C — 1.654" Pitch

PLATE THICKNESS 3/4"
ROLLER DIAMETER 13/16"

Type A

Number of Teeth	Catalog Number	Pitch Diameter	Stock Bore	Max. Bore	Hub Diameter	L.T.B.	Approximate Weight	Catalog Number	Stock Bore	Approximate Weight
12	62C12	6.39	5/16	2 3/4	4 1/4	3 3/4	15.8	62A12	5/16	6.8
13	62C13	6.91	5/16	3 1/4	4 3/4	3	19.4	62A13	5/16	8.0
14	62C14	7.43	5/16	3 3/4	4 3/4	3	20.6	62A14	5/16	9.2
15	62C15	7.96	5/16	3 3/4	4 3/4	3	22.0	62A15	5/16	10.5
17	62C17	9.00	5/16	3 3/4	4 3/4	3	24.0	62A17	5/16	12.0
19	62C19	10.05	5/16	3 3/4	4 3/4	3	28.0	62A19	5/16	16.8
20	62C20	10.57	5/16	3 3/4	4 3/4	3	30.0	62A20	5/16	18.6
24	62C24	12.67	1 1/4	3 3/4	5 1/2	4 3/4	49.0	62A24	1 1/4	26.0
26	62C26	13.72	1 1/4	3 3/4	5 1/2	4 3/4	53.0	62A26	1 1/4	30.0
30	62C30	15.82	1 1/4	3 3/4	5 1/2	4 3/4	65.0	62A30	1 1/4	42.0
36	62C36	18.98	1 1/4	3 3/4	5 1/2	4 3/4	82.0	62A36	1 1/4	59.0
54	62C54	28.45	1 1/4	3 3/4	5 1/2	4 3/4	125.0	62A54	1 1/4	135.0
60	62C60	31.60	1 1/4	3 3/4	5 1/2	4 3/4	138.0	62A60	1 1/4	169.0

78 FLAME CUT SPROCKETS FOR CHAINS:

78 — H 74 — 75 — H 75 — H 78 — H 78 LR — (14 — 18 TEETH ONLY) — H 78 RT — H 78 SR — H 79 — 88 — 188 — S 188 — S 78 — R 588 — RR 588 — R 778 — RR 778 — 988 — IS 880 — 87R — IS 881 — 81X — IS 882 — 433½ — LXS 881 — LXS 886 — US 881 — LXS 887 — LXS 882 — 488 — XS 578 — SS 188 — C 188 — US 278 R — US 882 — 578 R — 588 R

Type C — 2.609" Pitch

PLATE THICKNESS 7/8"
ROLLER DIAMETER 7/8"

Type A

Number of Teeth	Catalog Number	Pitch Diameter	Stock Bore	Max. Bore	Hub Diameter	L.T.B.	Approximate Weight	Catalog Number	Stock Bore	Approximate Weight
8	78C8	6.82	5/16	3 3/4	4 3/4	3 3/4	21	78A8	5/16	9.0
9	78C9	7.63	1 1/4	3 3/8	5 1/4	3 3/4	29	78A9	1 1/4	11.3
10	78C10	8.44	1 1/4	3 3/8	5 1/4	3 3/4	31	78A10	1 1/4	13.9
11	78C11	9.26	1 1/4	3 3/8	5 1/4	3 3/4	34	78A11	1 1/4	16.7
12	78C12	10.08	1 1/4	3 3/8	5 1/4	3 3/4	37	78A12	1 1/4	19.8
13	78C13	10.90	1 1/4	3 3/4	5 1/2	4 1/2	46	78A13	1 1/4	23.0
14	78C14	11.72	1 1/4	3 3/4	5 1/2	4 1/2	49	78A14	1 1/4	27.0
15	78C15	12.55	1 1/2	3 3/4	5 1/2	4 1/2	53	78A15	1 1/2	30.0
17	78C17	14.20	1 1/2	3 3/4	5 1/2	4 1/2	62	78A17	1 1/2	39.0
19	78C19	15.85	1 1/2	4 1/2	6 1/2	5 3/4	90	78A19	1 1/2	50.0
21	78C21	17.51	1 1/2	4 1/2	6 1/2	5 3/4	101	78A21	1 1/2	61.0
24	78C24	19.99	1 1/2	4 1/2	6 1/2	5 3/4	119	78A24	1 1/2	79.0
25	78C25	20.82	1 1/2	4 1/2	6 1/2	5 3/4	124	78A25	1 1/2	84.0
28	78C28	23.31	1 1/2	4 1/2	6 1/2	5 3/4	132	78A28	1 1/2	105.0
30	78C30	24.96	1 1/2	4 1/2	6 1/2	5 3/4	150	78A30	1 1/2	123.0
35	78C35	29.11	1 1/2	4 1/2	6 1/2	5 3/4	170	78A35	1 1/2	166.0
40	78C40	33.25	1 1/2	4 5/16	7 1/4	6 3/4	226	78A40	1 1/2	216.0
42	78C42	34.91	1 1/2	4 5/16	7 1/4	6 3/4	240	78A42	1 1/2	240.0
46	78C46	38.31	1 1/2	4 5/16	7 1/4	6 3/4	258	78A46	1 1/2	286.0
54	78C54	44.87	1 1/2	4 5/16	7 1/4	6 3/4	368	78A54	1 1/2	302.0
60	78C60	49.85	1 1/2	4 5/16	7 1/4	6 3/4	388	78A60	1 1/2	322.0

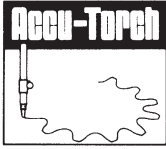
78 BORED-TO-SIZE FLAME CUT SPROCKETS

Type C — 2.609" Pitch

PLATE THICKNESS 7/8"
ROLLER DIAMETER 7/8"

Part Number	Pitch Diameter	Approximate Wt. Lbs.	Stock Finished Bores - Includes Keyway & 2 Setscrews							
78CS8	6.82"	21	1-7/16	1-15/16	2	2-3/16	2-7/16	2-15/16		
78CS9	7.63"	29	1-7/16	1-15/16	2	2-3/16	2-7/16	2-15/16		
78CS10	8.44"	31	1-7/16	1-15/16	2	2-3/16	2-7/16	2-15/16	3-7/16*	
78CS11	9.26"	34		1-15/16	2	2-3/16	2-7/16	2-15/16	3-7/16*	
78CS12	10.08"	37		1-15/16	2	2-3/16	2-7/16	2-15/16	3-7/16*	
78CS13	10.90"	46		1-15/16		2-3/16	2-7/16	2-15/16	3-7/16*	
78CS14	11.72"	49		1-15/16		2-3/16	2-7/16	2-15/16	3-7/16*	

Please contact *Martin* if Hub OD and Length Thru Bore dimensions are critical. These parts have setscrews at 90 degrees and 180 degrees instead of over keyway and 90 degrees.



Flame Cut Sprockets for Engineering Chains



1568 FLAME CUT SPROCKETS FOR CHAINS:

AX 1568 — X568 — JS 3011 — SS 568 — XX 568 — 1803 A — 1803 AB — MXS 3011 — IS 3011 — IS 3010 — US 3011 — LXS 3011 — LXS 3011 M

Type C — 3.067" Pitch

PLATE THICKNESS 1/4"
ROLLER DIAMETER 1 5/8"

Type A

Number of Teeth	Catalog Number	Pitch Diameter	Stock Bore	Max. Bore	Hub Diameter	L.T.B.	Approximate Weight	Catalog Number	Stock Bore	Approximate Weight
10	1568C10	9.92	1 1/2	3 3/4	5 1/2	4 1/4	46	1568A10	1 1/2	28
12	1568C12	11.85	1 1/2	3 3/4	5 1/2	4 1/4	58	1568A12	1 1/2	40
14	1568C14	13.78	1 1/2	3 3/4	5 1/2	4 1/4	73	1568A14	1 1/2	53
30	1568C30	29.34	1 1/2	4 1/4	6 1/2	5 1/4	217	1568A30	1 1/2	240
36	1568C36	35.19	1 1/2	5 1/4	7 1/2	5 1/4	257	1568A36	1 1/2	290
42	1568C42	41.04	1 1/2	5 1/2	8	6 1/4	407	1568A42	1 1/2	340
48	1568C48	46.89	1 1/2	5 1/2	8	6 1/4	448	1568A48	1 1/2	381

1030 FLAME CUT SPROCKETS FOR CHAINS:

1030 — CHAMPION NO. 3 — R 1033 — R 1035 — 1037 — 1539 — SS 40 — LXS 1031 — API 3 — LXS 1032 — SS 40 Hyp — IS 1030 — IS 1031 — IS 1032 — IS 1037 — US 1031 — 1190 — SXX — 1190 R — US 1032

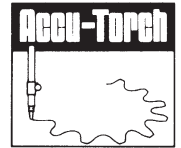
Type C — 3.075" Pitch

PLATE THICKNESS 1/4"
ROLLER DIAMETER 1 1/4"

Type A

Number of Teeth	Catalog Number	Pitch Diameter	Stock Bore	Max. Bore	Hub Diameter	L.T.B.	Approximate Weight	Catalog Number	Stock Bore	Approximate Weight
8	1030C8	8.05	1 1/4	3 1/4	5	3 3/4	31	1030A8	1 1/4	17.9
9	1030C9	8.99	1 1/4	3 1/4	5	3 3/4	36	1030A9	1 1/4	22.4
10	1030C10	9.95	1 1/4	3 1/4	5	3 3/4	40	1030A10	1 1/4	28.0
11	1030C11	10.91	1 1/4	3 1/4	5 1/2	4 1/4	51	1030A11	1 1/4	33.0
12	1030C12	11.88	1 1/2	3 3/4	5 1/2	4 1/4	57	1030A12	1 1/2	39.0
13	1030C13	12.85	1 1/2	3 3/4	5 1/2	4 1/4	64	1030A13	1 1/2	46.0
15	1030C15	14.79	1 1/2	4	6	5 1/4	91	1030A15	1 1/2	60.0
17	1030C17	16.73	1 1/2	4	6	5 1/4	109	1030A17	1 1/2	78.0
19	1030C19	18.68	1 1/2	4 1/2	6 1/2	5 1/4	137	1030A19	1 1/2	97.0
21	1030C21	20.63	1 1/2	4 1/2	6 1/2	5 1/4	158	1030A21	1 1/2	118.0
24	1030C24	23.56	1 1/2	4 1/2	6 1/2	5 1/4	176	1030A24	1 1/2	154.0
25	1030C25	24.53	1 1/2	5 1/4	7 1/2	5 1/4	206	1030A25	1 1/2	167.0
28	1030C28	27.46	1 1/2	5 1/4	7 1/2	5 1/4	236	1030A28	1 1/2	210.0
30	1030C30	29.42	1 1/2	5 1/4	7 1/2	5 1/4	254	1030A30	1 1/2	240.0
35	1030C35	34.30	1 1/2	5 1/2	8	6 1/4	313	1030A35	1 1/2	327.0
40	1030C40	39.19	1 1/2	5 1/2	8	6 1/4	360	1030A40	1 1/2	427.0
42	1030C42	41.15	1 1/2	5 1/2	8	6 1/4	410	1030A42	1 1/2	343.0
48	1030C48	47.03	1 1/2	6 1/2	9 1/2	6 1/4	501	1030A48	1 1/2	384.0
54	1030C54	52.89	1 1/2	6 1/2	9 1/2	6 1/4	549	1030A54	1 1/2	432.0
60	1030C60	58.75	1 1/2	7	10	7 1/4	642	1030A60	1 1/2	506.0

Maximum bores shown will accommodate standard keyseat and setscrew over keyseat. Slightly larger bores are possible with no keyseat, shallow keyseat, or setscrew at angle to keyseat.



82 FLAME CUT SPROCKETS FOR CHAINS:

H 82 — WH 82 — WR 82 — 103 — 131 — S 131 — WS 82 — WS 82 H — SS 131 — 527 R — 527 RX — C 9103 — 6131 — 4103 — C 131 — 382

Type C — 3.075" Pitch

PLATE THICKNESS 1/8"
ROLLER DIAMETER 1/32"

Type A

Number of Teeth	Catalog Number	Pitch Diameter	Stock Bore	Max. Bore	Hub Diameter	L.T.B.	Approximate Weight	Catalog Number	Stock Bore	Approximate Weight
7	82C7	7.09	1 1/8	2 1/8	4 1/2	3 1/2	24	82A7	1 1/8	12.6
8	82C8	8.04	1 1/4	3 1/4	5 1/4	4 1/4	34	82A8	1 1/4	16
9	82C9	8.99	1 1/4	3 3/4	5 1/4	4 1/4	38	82A9	1 1/4	20
10	82C10	9.95	1 1/4	3 3/4	5 1/4	4 1/4	43	82A10	1 1/4	25
11	82C11	10.91	1 1/4	3 5/8	5 1/2	4 1/4	54	82A11	1 1/4	30
12	82C12	11.88	1 1/4	3 5/8	5 1/2	4 1/4	60	82A12	1 1/4	36
13	82C13	12.85	1 1/4	3 5/8	5 1/2	4 1/4	66	82A13	1 1/4	42
14	82C14	13.82	1 1/4	3 5/8	5 1/2	4 1/4	72	82A14	1 1/4	48
15	82C15	14.79	1 1/2	4 1/2	6 1/2	5 1/2	94	82A15	1 1/2	54
16	82C16	15.76	1 1/2	4 1/2	6 1/2	5 1/2	102	82A16	1 1/2	62
17	82C17	16.73	1 1/2	4 1/2	6 1/2	5 1/2	110	82A17	1 1/2	70
18	82C18	17.71	1 1/2	4 1/2	6 1/2	5 1/2	119	82A18	1 1/2	79

82 BORED-TO-SIZE FLAME CUT SPROCKETS

Type C — 3.075" Pitch

PLATE THICKNESS 1/8"
ROLLER DIAMETER 1/32"

Part Number	Pitch Diameter	Approximate Wt. Lbs.	Stock Finished Bores - Includes Keyway & 2 Setscrews	
82CS10	9.95"	43	2-7/16	2-15/16
82CS11	10.91"	54	2-7/16	2-15/16
82CS12	11.88"	60	2-7/16	2-15/16

Please contact *Martin* if Hub OD and Length Thru Bore dimensions are critical.

238 FLAME CUT SPROCKETS FOR CHAINS:

RX 238 — IS 3514 J — 1616 A — MXS 3514 — US 3514 — LXS 3514 — LXS 3514 M

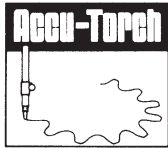
Type C — 3.500" Pitch

PLATE THICKNESS 1/4"
ROLLER DIAMETER 1/4"

Type A

Number of Teeth	Catalog Number	Pitch Diameter	Stock Bore	Max. Bore	Hub Diameter	L.T.B.	Approximate Weight	Catalog Number	Stock Bore	Approximate Weight
10	238C10	11.33	1 1/2	3 3/4	5 1/2	4 1/4	54	238A10	1 1/2	35
12	238C12	13.52	1 1/2	3 3/4	5 1/2	4 1/4	70	238A12	1 1/2	51
14	238C14	15.73	1 1/2	3 3/4	5 1/2	4 1/4	88	238A14	1 1/2	60
30	238C30	33.48	1 1/2	4	6	5 1/2	312	238A30	1 1/2	253
36	238C36	40.16	1 1/2	4	6	5 1/2	445	238A36	1 1/2	370
42	238C42	46.84	1 1/2	5 1/2	8	6 1/2	446	238A42	1 1/2	379
48	238C48	53.52	1 1/2	5 1/2	8	6 1/2	517	238A48	1 1/2	450

Maximum bores shown will accommodate standard keyseat and setscrew over keyseat. Slightly larger bores are possible with no keyseat, shallow keyseat, or setscrew at angle to keyseat.



Flame Cut Sprockets for Engineering Chains



124 FLAME CUT SPROCKETS FOR CHAINS:

H 124 — W 124 — WS 124 — WR 124 — WH 124

Type C — 4.000" Pitch

PLATE THICKNESS 1½"
ROLLER DIAMETER 1½"

Type A

Number of Teeth	Catalog Number	Pitch Diameter	Stock Bore	Max. Bore	Hub Diameter	L.T.B.	Approximate Weight	Catalog Number	Stock Bore	Approximate Weight
6	124C6	8.00	⅝	3¼	4%	4%	36	124A6	⅝	21
7	124C7	9.22	1	3⅝	5%	4%	52	124A7	1	28
8	124C8	10.45	1	3⅝	5%	4%	61	124A8	1	37
9	124C9	11.70	1	3⅝	5%	4%	70	124A9	1	46
10	124C10	12.94	1	3⅝	5%	4%	79	124A10	1	55
11	124C11	14.20	1½	4¼	6%	4%	95	124A11	1½	68
12	124C12	15.45	1½	4¼	6%	4%	107	124A12	1½	80
13	124C13	16.72	1½	4¼	6%	4%	120	124A13	1½	93
14	124C14	17.98	1½	4¼	6%	4%	135	124A14	1½	108
15	124C15	19.24	1½	4¼	6%	6	168	124A15	1½	124
16	124C16	20.50	1½	4¼	6%	6	185	124A16	1½	141

124 BORED-TO-SIZE FLAME CUT SPROCKETS

Type C — 4.000" Pitch

PLATE THICKNESS 1½"
ROLLER DIAMETER 1½"

Part Number	Pitch Diameter	Approximate Wt. Lbs.	Stock Finished Bores - Includes Keyway & 2 Setscrews			
124CS9	11.70"	70	2-3/16	2 -7/16	2-15/16	
124CS10	12.94"	79		2 -7/16	2-15/16	3-7/16
124CS11	14.20"	95			2-15/16	3-7/16
124CS12	15.45"	107			2-15/16	3-7/16

Please contact *Martin* if Hub OD and Length Thru Bore dimensions are critical.

1240 FLAME CUT SPROCKETS FOR CHAINS:

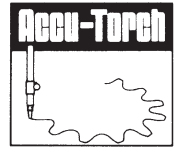
1240 — CHAMPION NO. 4 — 1244 — RX 1245 — R 1248 — SS 124 — API 4 — LXS 1242 — SS 124 — 3 BAR HYPER — LXS 1245 — SS 124 D — SS 124 DP — IS 1242 — IS 1425

Type C — 4.063" Pitch

PLATE THICKNESS 1¾"
ROLLER DIAMETER 1¾"

Type A

Number of Teeth	Catalog Number	Pitch Diameter	Stock Bore	Max. Bore	Hub Diameter	L.T.B.	Approximate Weight	Catalog Number	Stock Bore	Approximate Weight
6	1240C6	8.13	⅝	2½	4	4	34	1240A6	⅝	26
7	1240C7	9.36	1¼	3%	5%	4%	51	1240A7	1¼	34
8	1240C8	10.62	1½	4%	6%	5	78	1240A8	1½	44
9	1240C9	11.88	1½	4%	6%	5	89	1240A9	1½	55
10	1240C10	13.15	1½	4%	6%	5	101	1240A10	1½	67
11	1240C11	14.42	1½	4%	6%	5	115	1240A11	1½	81
12	1240C12	15.70	1½	5%	7	6	140	1240A12	1½	96
13	1240C13	16.98	1½	5%	7	6	155	1240A13	1½	111
14	1240C14	18.26	1½	5%	7	6	174	1240A14	1½	130
15	1240C15	19.54	1½	5%	7	6	192	1240A15	1½	148
16	1240C16	20.83	1½	5%	8	6%	230	1240A16	1½	168
18	1240C18	23.40	1½	5%	8	6%	275	1240A18	1½	213
20	1240C20	25.97	1½	5½	8	6%	300	1240A20	1½	263
21	1240C21	27.26	1½	5½	8	6%	319	1240A21	1½	289
24	1240C24	31.12	1½	5½	8	6%	387	1240A24	1½	377
25	1240C25	33.42	1½	6	9	6%	426	1240A25	1½	409
28	1240C28	36.29	1½	6	9	6%	494	1240A28	1½	509
30	1240C30	38.87	1½	7	10	6%	583	1240A30	1½	587
35	1240C35	45.33	1½	7	10	6%	729	1240A35	1½	620
40	1240C40	51.78	1½	7½	11	7%	932	1240A40	1½	721
48	1240C48	62.12	1½	7½	11	7%	1078	1240A48	1½	867



635 FLAME CUT SPROCKETS FOR CHAINS:

RO 635 — B 635 — X 635 — 1350 — 450 SX — 450 SXX — IS 4522 — 1340 RX — LXS 4522 M

Type C — 4.500" Pitch

PLATE THICKNESS 1³/₄"
ROLLER DIAMETER 2¹/₂"

Type A

Number of Teeth	Catalog Number	Pitch Diameter	Stock Bore	Max. Bore	Hub Diameter	L.T.B.	Approximate Weight	Catalog Number	Stock Bore	Approximate Weight
10	635C10	14.56	1½	4	6½	5	111	635A10	1½	87
12	635C12	17.39	1½	4	6½	5	148	635A12	1½	119
14	635C14	20.22	1½	4	6½	5	188	635A14	1½	159
30	635C30	43.05	1½	5%	7½	5%	592	635A30	1½	542
36	635C36	51.63	1½	5%	7½	5%	764	635A36	1½	715
42	635C42	60.22	1½	6%	9½	7%	884	635A42	1½	776
48	635C48	68.81	1½	7%	11	7%	1174	635A48	1½	963

1207 FLAME CUT SPROCKETS FOR CHAINS:

RX 1207 — RO 1205 — A 1302 — JS 5031 — 1510 XX — 1602 A — 1602 AA — US 5201 A — LXS 5028 — LXS 6038 M — MXS 5028

Type C — 5.000" Pitch

PLATE THICKNESS 2¹/₄"
ROLLER DIAMETER 2¹/₂"

Type A

Number of Teeth	Catalog Number	Pitch Diameter	Stock Bore	Max. Bore	Hub Diameter	L.T.B.	Approximate Weight	Catalog Number	Stock Bore	Approximate Weight
10	1207C10	16.18	1½	4½	6½	5½	160	1207A10	1½	131
12	1207C12	19.32	1½	4½	6½	5½	215	1207A12	1½	187
14	1207C14	22.47	1½	5%	7½	5%	298	1207A14	1½	254
30	1207C30	47.84	1½	6	9	6%	809	1207A30	1½	730
36	1207C36	57.37	1½	7	10	8%	1161	1207A36	1½	1025
42	1207C42	66.91	1½	7	10	8%	1245	1207A42	1½	1109
48	1207C48	76.45	1½	7½	11	10%	2005	1207A48	1½	1794

132 FLAME CUT SPROCKETS FOR CHAINS:

C 132 — A 132 — A 132 WS — WS 132 — C 132 M — C 132 W — SX 150 — SXA 150 — 150 X — 6150 — W 157 — WH 157 — WR 157

Type C — 6.050" Pitch

PLATE THICKNESS 2³/₄"
ROLLER DIAMETER 1²³/₃₂"

Type A

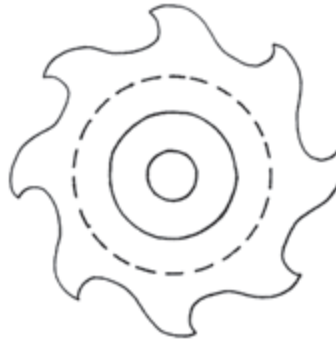
Number of Teeth	Catalog Number	Pitch Diameter	Stock Bore	Max. Bore	Hub Diameter	L.T.B.	Approximate Weight	Catalog Number	Stock Bore	Approximate Weight
6	132C6	12.10	1½	4½	6½	6	119	132A6	1½	90
7	132C7	13.95	1½	4½	6½	6	149	132A7	1½	120
8	132C8	15.81	1½	4½	6½	6	182	132A8	1½	153
9	132C9	17.69	1½	5%	7½	6%	236	132A9	1½	192
10	132C10	19.58	1½	5%	7½	6%	278	132A10	1½	235
11	132C11	21.47	1½	5%	7½	6%	326	132A11	1½	283
12	132C12	23.38	1½	5%	7½	6%	378	132A12	1½	334

Veneer Dryer Parts

81X 81 X (2.609)

Hooked Tooth Sprocket "B" Style (Right and Left Hand)

No. Teeth	Part Number	Outside Diam.	Type	Bore		Hub (Inch)	
				Stock	Max.	Diam.	LTB
8	81X-B8RH	6½	B	1	1½	2¾	1¾
8	81X-B8LH	6½	B	1	1½	2¾	1¾



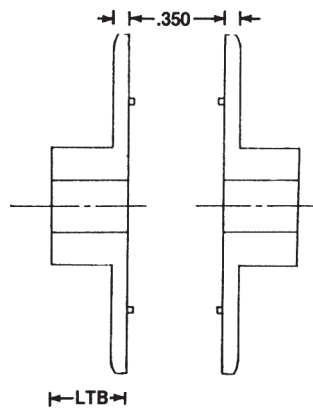
(RH) Right Hand



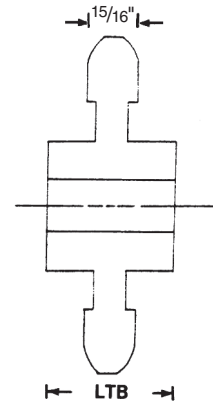
(LH) Left Hand

"C" Style

No. Teeth	Part Number	Outside Diam.	Type	Bore		Hub (Inch)	
				Stock	Max.	Diam.	LTB
7	81X-C7	5¾	C	¾	1½	2¾	2¾
8	81X-C8	6¾	C	¾	1½	2¾	2¾
9	81X-C9	7⅞	C	¾	1½	2¾	2¾



Type B
(Cast Iron)

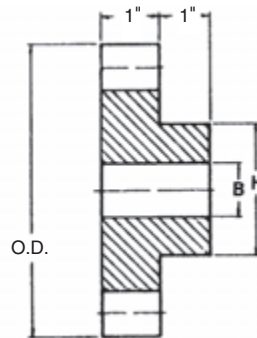


Type C
(Cast Iron)



Star Gear

No. Teeth	Part Number	Outside Diam.	Type	Bore		Hub (Inch)	
				Stock	Max.	Diam.	LTB
10	SG510	4 ^{31/64}	B	1	1½	2¾	2



Type B
(Cast Iron)



MTO Engineered Class Cast Iron Sprockets



Cast Split Sprockets

Hunting Tooth Sprockets

Rivetless Chain Sprocket

Drag Chain Sprockets

- Plain
- Flanged

Traction Wheels

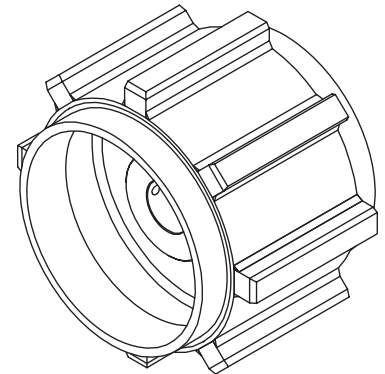
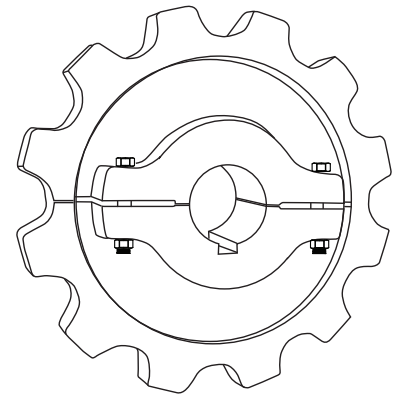
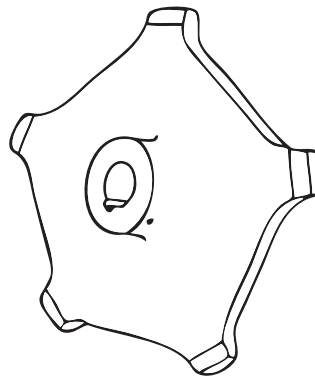
- Plain
- Flanged

Plate Body Sprockets

Chain Saver Rim Sprockets

Adjustable Hub Sprockets

Chilled Rim Sprockets



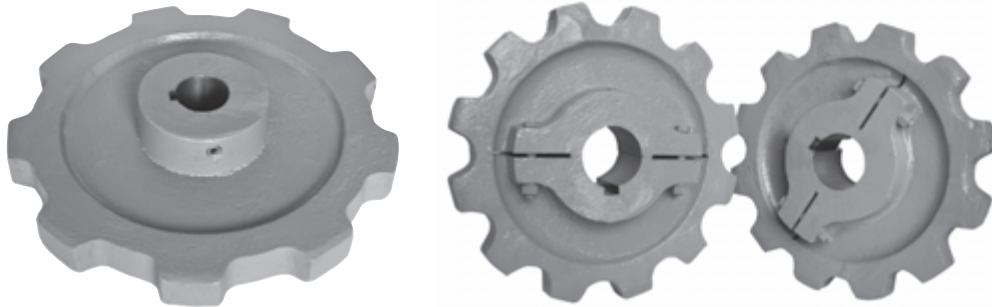
Sprockets Available to fit Standard Chain Sizes

55	103	H121	197	678	856	998
D60	H104	SD121	348	698	859	1030
62	W-106	WD-122	348	CS720S	F912R	1036
67	S-110	WD-123	458	720S	E922	1113
78	WD-110	WD-124	468	730	F922	1120
W-78	111SP	130	WD-480	A730	925R	1131
94R	111	132	483	CS730	933	F1222
95R	WD-112	183	520	823	951	2124
102B	WD-116	188	531	825	D963R	2180
H102	WD-119	194	625R	830	E963R	4850
102.5	WD-120	196	667	844	F963R	9250

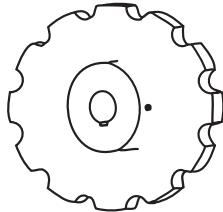
Not all sprockets fit all chain sizes, see factory for availability.

Cast Iron Sprocket Types

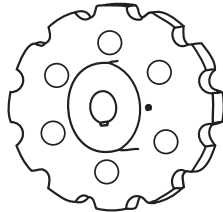
Now Stocking Select Sizes - Call *Martin* for Availability



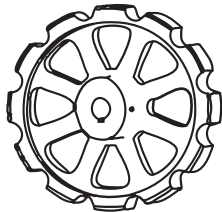
C	830	C	9	CR S
<u>Cast Iron</u> CWD if Wide Drag	<u>Chain</u> Example: 132 - 82 102B - 55 78 - 131	<u>Sprocket Type</u> A - Plate Only B - Hub One Side C - Hub Both Sides D - Detachable Hubs	<u>No. of Teeth</u>	<u>Special Instructions</u> CRS - Chilled Rim S - Split CS - Chain Saver



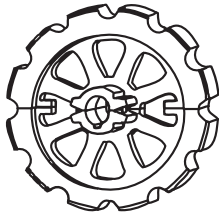
Cast Steel Plate
Body



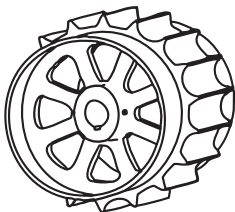
Cast Steel Plate
Body with
Lightening Holes



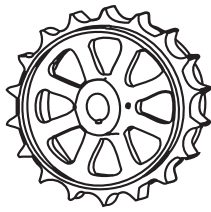
Cast Sprocket
Arm Body



Cast Split
Arm Body



Drum Flanged Arm
Body Sprocket



Flanged Rim
Sprocket

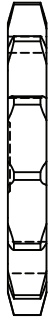
SPROCKET STYLES

Cast Arm Body is often used in larger diameter sprockets. The arms are advantageous because they reduce the weight as well as the cost.

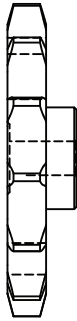
Cast Split (Arm or Plate) Body- The split style sprocket eases maintenance and installation. The sprocket can be removed without having to disassemble an entire system.

Cast Plate Body style is primarily used in smaller diameter sprockets when the arm body style is unnecessary. Larger diameter sprockets only use this plate body style when the torque is beyond the limits of the arm body style.

Special Sprockets – *Martin* also offers special made-to-order sprockets such as the flanged-rim sprocket (image to the left).



Type A



Type B

Hub Types

Cast Iron Sprockets are offered in different hub types including Type A, B, and C.

Type A

An A Style Sprocket is a flat sprocket with no hub extension on either side.

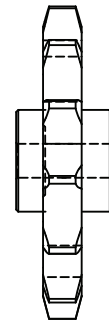
Type B

A B Style Sprocket is a sprocket with a hub extension on one side.

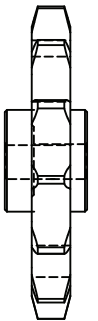
Type C

A C Style Sprocket is a sprocket with a hub extension on both sides.

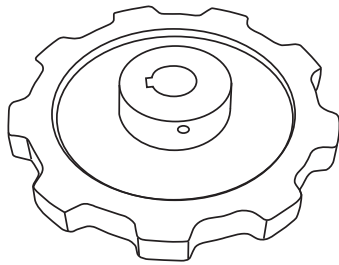
Type C Offset hubs are the same as a "Type C", however the hubs are slightly off center.



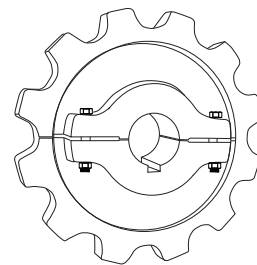
Type C



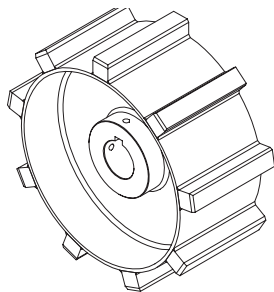
Type C Offset



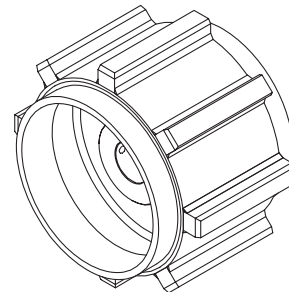
Non-Split Engineering Class Sprockets These sprockets can be supplied in various cast materials, with or without hardened teeth.



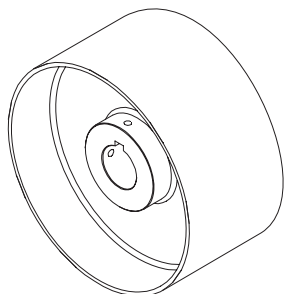
Split Sprockets are made in one piece, machined, then split into two halves after machining. The two halves can then be bolted onto the shaft without removing the shaft or the bearings from the installation. Also available in Chilled Rim.



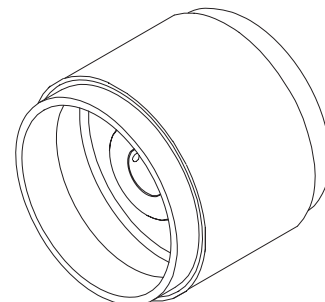
Drag Chain Sprockets are of drum type design with full width teeth. These sprockets are available plain, as shown here, or drum flanged as shown below. All types have been redesigned to provide additional wear life on the welded steel drag chains that have largely replaced malleable types.



Drum Flanged Drag Chain Sprockets have side extension flanges extending from below the root line. These flanges are used with refuse over the end of conveyors and to serve as a guard if chains jump sprockets or traction wheels.



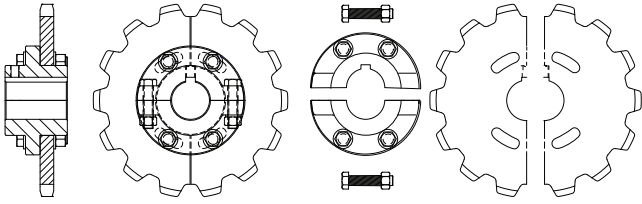
Drag Chain Traction Wheels are identical to sprockets but have no teeth. They are commonly used to turn chains at the ends of conveyors or to increase chain wrap in "S" Wrap" drive designs. They are available plain (left) or drum flanged.



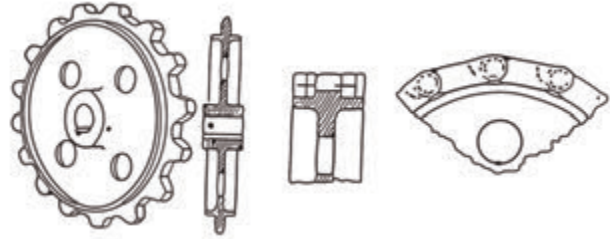
Drum Flanged Traction Wheels are used with drag chains either at the discharge end of the conveyor to guide the refuse over the end, or as a chain guard. Flanges on drag chains sprockets and traction wheels are available in many different lengths.

Cast Iron Sprocket Types

Martin



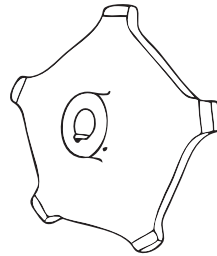
Adjustable Hub Sprockets are designed for use in multi-strand conveyors using top carriers or flights, where alignment of adjacent strands is a problem. The hub allows the chain to be moved forward or backward several inches as conditions in the conveyor require. The adjustable sprockets are available in solid or split construction.



Chainsaver Rims are short flanges below the root line of the sprocket which make contact with the sidebars of the chain. The rims help support the chain and keep the chain running on the true pitch line of the sprocket. Chainsaver Rims are particularly advantageous when used on elevator headshaft sprockets handling heavy or abrasive loads, and in sewage treatment applications where long, unsupported strands are common.



Hunting Tooth Sprockets are designed with an odd number of teeth, with the pitch of the teeth $1/2$ the pitch of the chain. This allows each tooth to contact the chain only every other revolution. Wear life of the sprocket is effectively doubled. A Chainsaver Rim is frequently added to these sprocket to give even longer life.



Drop Forged or Rivetless Chain Sprockets are of skip tooth design, since the block link of these chains is solid. Sprockets are available for all popular drop forged chains in both regular and X series.

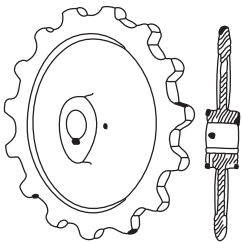


Plate Body with Cam-Shaped Hubs All sprockets are produced with plate type bodies as shown. Few spoked sprockets are offered due to strength limitations of this type design. As space permits, many smaller sprockets are made with cam-shaped hubs, which give additional strength over the keyway, but reduces weight compared to conventional round hubs of the same diameter.

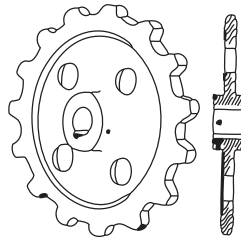
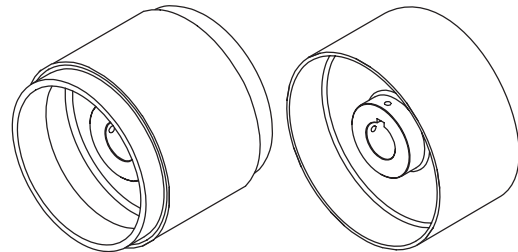
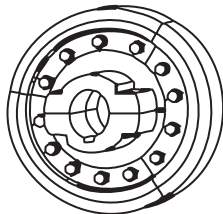
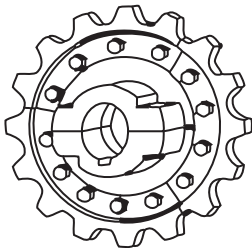


Plate body with Lightening Holes Where space permits, larger sprockets are made with lightening holes cast through the body to reduce weight and facilitate handling. Standard round hubs are used on most larger sprockets, with diameters of hubs as appropriate according to chain type and ANSI hub specifications.



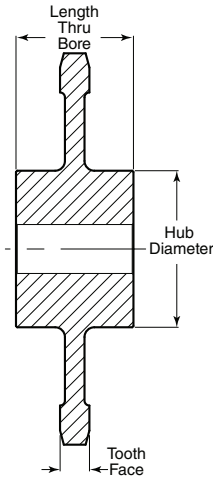
Segmental Sprockets- *Martin* offers segmental sprockets with either solid or split hub bodies. Segmental sprockets greatly reduce the labor costs as well as the downtime associated with replacing worn standard type sprockets. Worn segments can be replaced by simply removing and replacing segments only, eliminating the need to remove the shaft, and or bearing assemblies, as well as the need to realign the hub.

Traction Wheels-Traction Wheels are offered in solid or segmental construction. They are often used in bucket elevators and can withstand abrasive materials.

INFORMATION NEEDED TO QUOTE / ORDER

The following information should be given when ordering sprockets or traction wheels:

1. **QUANTITY** _____ (Number of sprockets required).
2. **CHAIN** _____ (Number and type to be used).
3. **NO. OF TEETH** _____ (The effective number of teeth should be specified when ordering a double duty, hunting tooth or skip tooth sprocket).
4. **PITCH DIAMETER** _____ (For traction wheels, the outside diameter should be specified in place of the pitch diameter).
5. **MATERIAL** _____ (Specify Chilled Rim if hardened teeth required).
6. **CONSTRUCTION** _____ (Standard, split or segmental construction should be specified).
7. **TYPE** _____ (Standard, hunting tooth, double duty, chain saver, etc., must be specified. Chain saver sprockets increase their life by having flanges on each side of the teeth so that the sidebar engages the flange, thereby distributing the wear over a greater area).
8. **BORE** _____ (Sprockets and traction wheels are usually furnished with specific bores).
9. **HUB STYLE** _____ (All hubs are furnished (C style) unless specified otherwise)
10. **KEYWAY AND SETSCREWS** _____ (Standard straight keyways are finished with one setscrew over the keyway and one at 90°).



55 CAST TOOTH SPROCKETS — PITCH 1.631

FOR CHAINS NO.: 55, C55, SS55, C55A, C55B, C55D, C55L

Tooth Face at Pitch Line: 0.688 — Roller Diameter: 0.718

Number of Teeth	Catalog Number	Pitch Diameter	Style	Hub Diameter	Length Thru Bore	Max. Bore	Weight (Lbs.) Approx.
5	C55C5	2.77	C	2.00	2.00	0.94	2.0
6	C55C6	3.26	C	2.00	2.00	0.94	2.0
7	C55B7	3.76	B	2.50	2.00	1.63	3.0
8	C55B8	4.26	B	2.50	2.00	1.63	4.0
9	C55C9	4.76	C	3.00	2.00	1.94	5.0
10	C55C10	5.26	C	3.50	2.00	2.19	5.0
11	C55C11	5.77	C	4.50	3.00	2.88	6.0
12	C55C12	6.30	C	4.50	3.00	2.88	10.0
13	C55C13	6.80	C	4.50	3.00	2.88	10.0
14	C55C14	7.31	C	4.50	3.00	2.88	12.0
15	C55C15	7.83	C	4.50	3.00	2.88	13.0
16	C55C16	8.34	C	4.50	3.00	2.88	13.0
17	C55C17	8.85	C	4.50	3.00	2.88	17.0
18	C55C18	9.39	C	4.50	3.00	2.88	20.0
19	C55C19	9.92	C	4.50	3.00	2.88	20.0
20	C55C20	10.43	C	6.00	3.50	2.88	20.0
21	C55C21	10.94	C	6.00	3.50	4.00	23.0
22	C55C22	11.43	C	6.00	3.50	4.00	24.0
23	C55C23	11.97	C	6.00	3.50	4.00	29.0
24	C55C24	12.47	C	6.00	3.50	4.00	32.0
25	C55C26	13.00	C	8.00	4.00	6.00	31.0
27	C55C27	14.07	C	8.00	4.00	6.00	38.0
28	C55C28	14.54	C	8.00	4.00	6.00	42.0
29	C55C29	15.08	C	8.00	4.00	6.00	26.0
30	C55C30	15.59	C	8.00	4.00	6.00	54.0
31	C55C31	16.11	C	8.00	4.00	6.00	58.0
32	C55C32	16.63	C	8.00	4.00	6.00	63.0
34	C55C34	17.67	C	8.00	4.00	6.00	31.0
35	C55C35	18.20	C	8.00	4.00	6.00	69.0
36	C55C36	18.70	C	8.00	4.00	6.00	77.0
38	C55C38	19.75	C	8.00	4.00	6.00	35.0
40	C55C40	20.79	C	10.00	4.00	8.00	37.0
41	C55C41	21.31	C	10.00	4.00	8.00	36.0
48	C55C48	24.94	C	10.00	4.00	8.00	45.0
50	C55C50	25.98	C	10.00	4.00	8.00	47.0
54	C55C54	28.00	C	10.00	4.00	8.00	50.0

62 CAST TOOTH SPROCKETS — PITCH 1.654 CHILLED RIM

FOR CHAINS NO.: 62, 072, H62, 362

Tooth Face at Pitch Line: 0.812 — Roller Diameter: 0.812

Number of Teeth	Catalog Number	Pitch Diameter	Style	Hub Diameter	Length Thru Bore	Max. Bore	Weight (Lbs.) Approx.
5	C62C5CR	2.81	C	1.38	1.25	.75	1.5
6	C62C6CR	3.32	C	1.75	1.25	0.94	3.0
7	C62C7CR	3.82	C	2.50	2.00	1.62	2.0
8	C62C8CR	4.32	C	3.00	2.00	1.81	4.0
9	C62C9CR	4.84	C	3.00	2.00	1.81	5.0
10	C62C10CR	5.35	C	4.00	3.00	2.50	9.0
11	C62C11	5.87	C	4.00	3.00	2.50	9.0
12	C62C12	6.39	C	4.75	3.50	2.50	7.0
13	C62C13	6.91	C	4.75	3.50	3.00	14.0
14	C62C14	7.43	C	4.75	3.50	3.00	24.0
15	C62C15	7.96	C	5.00	3.50	3.50	26.0
16	C62C16	8.48	C	5.00	3.50	3.50	25.0
17	C62C17	9.00	C	5.00	3.50	3.50	26.0
18	C62C18	9.53	C	5.00	3.50	3.50	28.0
19	C62C19	10.05	C	5.00	3.50	3.50	22.0
20	C62C20	10.57	C	5.50	4.00	4.00	24.0
21	C62C21	11.10	C	5.50	4.00	4.00	39.0
22	C62C22	11.63	C	5.50	4.00	4.00	27.0
23	C62C23	12.15	C	5.50	4.00	4.00	30.0
24	C62C24	12.67	C	5.50	4.00	4.00	36.0
25	C62C25	13.20	C	5.50	4.50	4.00	36.0
26	C62C26	13.72	C	5.50	4.50	4.00	36.0
27	C62C27	14.25	C	5.50	4.50	4.00	58.0
28	C62C28	14.77	C	5.50	4.50	4.00	60.0
29	C62C29	15.30	C	5.50	4.50	4.00	31.6
30	C62C30	15.82	C	6.00	4.50	4.50	44.0
32	C62C32	16.88	C	6.00	4.50	4.50	48.0
33	C62C33	17.44	C	6.00	4.50	4.50	50.0
34	C62C34	17.93	C	6.00	4.50	4.50	77.0
36	C62C36	18.98	C	6.00	4.50	4.50	90.0
38	C62C38	20.03	C	6.00	5.00	4.50	93.0
39	C62C39	20.55	C	6.00	5.00	4.50	61.0
40	C62C40	21.07	C	6.00	5.00	4.50	40.2
41	C62C41	21.61	C	6.00	5.00	4.50	65.0
42	C62C42	22.13	C	6.00	5.00	4.50	72.0
43	C62C43	22.66	C	8.00	5.50	6.00	74.0
45	C62C45	23.71	C	8.00	5.50	6.00	77.0
46	C62C46	24.24	C	8.00	5.50	6.00	80.0
47	C62C47	24.77	C	8.00	5.50	6.00	48.6
48	C62C48	25.29	C	8.00	5.50	6.00	83.0
49	C62C49	25.82	C	8.00	5.50	6.00	84.0
54	C62C54	28.45	C	8.00	5.50	6.00	93.0
60	C62C60	31.60	C	8.00	5.50	6.00	71.0

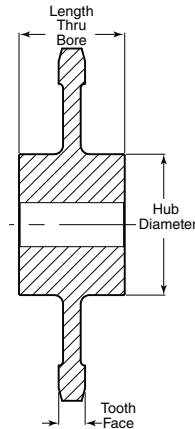
NOTE: Weights and Dimensions are approximate.

Please consult *Martin* for max hub information.

All Cast Sprockets available as Split Sprockets.

CHAINSAVER rims available on request.

HEAT TREAT available upon request.



67 CAST TOOTH SPROCKETS — PITCH 2.308 CHILLED RIM

FOR CHAINS NO.: 57, 67, 77, 467, 477, C77, H-60, SM477, 967, 977

Tooth Face at Pitch Line: 0.687 — Roller Diameter: 0.812

Number of Teeth	Catalog Number	Pitch Diameter	Style	Hub Diameter	Length Thru Bore	Max. Bore	Weight (Lbs.) Approx.
5	C67C5CR	3.93	C	2.25	1.75	1.19	4.0
6	C67C6CR	4.62	C	3.00	2.00	1.81	6.0
7	C67C7CR	5.32	C	3.50	3.00	2.19	8.0
8	C67C8CR	6.03	C	4.00	3.00	2.50	10.0
9	CRC67C9	6.75	C	4.50	3.00	2.88	12.0
10	C67C10CR	7.46	C	4.50	3.00	2.88	14.0
11	C67C11CR	8.19	C	4.50	3.00	2.88	18.0
12	C67C12CR	8.92	C	4.50	3.00	2.88	20.0
13	C67C13CR	9.64	C	4.50	3.00	2.88	23.0
14	C67C14CR	10.37	C	5.00	3.00	3.50	22.0
15	C67C15CR	11.10	C	5.00	3.5	3.50	28.0
16	C67C16CR	11.83	C	5.00	3.5	3.50	30.0
17	C67C17CR	12.56	C	6.00	3.5	4.50	31.0
18	C67C18CR	13.29	C	6.00	3.5	4.50	35.0
19	C67C19CR	14.02	C	6.00	3.5	4.50	43.0
20	C67C20CR	14.75	C	6.00	4.00	4.50	51.0
21	C67C21CR	15.43	C	6.00	4.00	4.50	55.0
22	C67C22CR	16.16	C	6.00	4.00	4.50	58.0
23	C67C23CR	16.89	C	6.00	4.00	4.50	62.0
24	C67C24CR	17.68	C	6.00	4.00	4.50	67.0
25	C67C25CR	18.35	C	8.00	4.50	6.00	53.0
26	C67C26CR	19.14	C	8.00	4.50	6.00	54.0
27	C67C27CR	19.89	C	8.00	4.50	6.00	59.0
28	C67C28CR	20.61	C	8.00	4.50	6.00	34.0
30	C67C30CR	22.07	C	8.00	4.50	6.00	67.0
32	C67C32CR	23.54	C	8.00	4.50	6.00	23.0
33	C67C33CR	24.27	C	8.00	4.50	6.00	75.0
34	C67C34CR	25.00	C	8.00	4.50	6.00	48.0
35	C67C35CR	25.74	C	8.00	4.50	6.00	80.0
36	C67C36CR	26.47	C	8.00	4.50	6.00	84.0
38	C67C38CR	27.94	C	10.00	6.00	8.00	88.0
40	C67C40CR	29.40	C	10.00	6.00	8.00	94.0
44	C67C44CR	32.34	C	10.00	6.00	8.00	120.0
45	C67C45CR	33.06	C	10.00	6.00	8.00	125.0
48	C67C48CR	35.27	C	10.00	6.00	8.00	115.0
60	C67C60CR	44.08	C	10.00	6.00	8.00	148.0

78 CAST TOOTH SPROCKETS — PITCH 2.609

FOR CHAINS NO.: 75, 78, 88, H78, H79, BRH, 188, C188, SS188, 78, MXS882, MSR-1288, 433-1/2, H74, H75, H78A, H78B, H78SR, BRH188, MW188RT, 488, SS578, 81X

Tooth Face at Pitch Line: .937 — Roller Diameter: 0.875

Number of Teeth	Catalog Number	Pitch Diameter	Style	Hub Diameter	Length Thru Bore	Max. Bore	Weight (Lbs.) Approx.
5	78C5	4.44	C	2.50	2.50	1.19	5
6	78C6	5.22	C	3.50	2.75	1.44	6
7	78C7	6.01	C	4.00	3.00	2.44	11
8	78C8	6.82	C	4.75	3.12	2.81	15
9	78C9	7.63	C	5.25	3.88	3.25	16
10	78C10	8.44	C	5.25	3.88	3.25	19
11	78C11	9.26	C	5.25	3.88	3.25	23
12	78C12	10.08	C	6.00	3.88	3.25	28
13	78C13	10.90	C	6.00	4.50	3.31	36
14	78C14	11.72	C	6.00	4.50	3.31	39
15	78C15	12.55	C	6.00	4.50	3.31	40
16	78C16	13.37	C	6.00	4.50	3.31	53
17	78C17	14.20	C	6.00	4.50	3.31	55
18	78C18	15.02	C	6.00	4.50	4.06	61
19	78C19	15.85	C	6.50	5.38	4.06	64
20	78C20	16.68	C	6.50	5.38	4.06	67
21	78C21	17.50	C	6.50	5.38	4.06	79
22	78C22	18.33	C	6.50	5.38	4.06	89
23	78C23	19.16	C	6.50	5.38	4.06	91
24	78C24	19.99	C	7.00	5.38	4.06	99
25	78C25	20.81	C	7.00	5.38	4.06	107
26	78C26	21.64	C	7.00	5.38	4.06	111
27	78C27	22.47	C	7.00	5.38	4.06	112
28	78C28	23.30	C	7.00	5.38	4.06	114
29	78C29	24.05	C	7.00	5.38	4.06	116
30	78C30	24.96	C	7.00	5.38	4.06	119
31	78C31	25.79	C	7.00	5.38	4.06	123
32	78C32	26.62	C	7.00	5.38	4.06	130
33	78C33	27.38	C	7.00	5.38	4.06	136
34	78C34	28.28	C	7.00	5.38	4.06	141
35	78C35	29.11	C	7.00	5.38	4.06	146
36	78C36	29.93	C	7.00	5.38	4.06	153
38	78C38	31.60	C	7.00	5.38	4.06	162
39	78C39	32.42	C	7.00	5.38	4.06	170
40	78C40	33.25	C	7.25	6.75	4.62	176
41	78C41	34.08	C	7.25	6.75	4.62	180
42	78C42	34.91	C	7.25	6.75	4.62	193
43	78C43	35.65	C	7.25	6.75	4.62	197
44	78C44	36.57	C	7.25	6.75	4.62	202
45	78C45	37.31	C	7.25	6.75	4.62	212
46	78C46	38.23	C	7.25	6.75	4.62	221
48	78C48	38.89	C	7.25	6.75	4.62	249
54	78C54	44.87	C	7.25	6.75	4.62	265

NOTE: Weights and Dimensions are approximate.

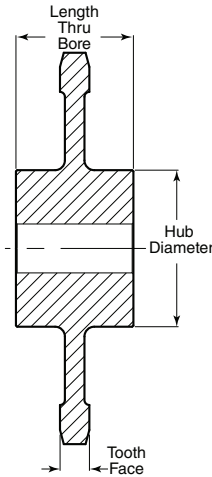
Please consult *Martin* for max hub information.

All Cast Sprockets available as Split Sprockets.

CHAINSAVER rims available on request.

HEAT TREAT available upon request.

Cast Iron Sprockets



95R CAST TOOTH SPROCKETS — PITCH 4.00 CHILLED RIM

FOR CHAINS NO.: 4013, 1120, 1520, LXS4013, MSR 4013, 95R, 1520C, SS1120, RR1120, RS4013

Tooth Face at Pitch Line: — Roller Diameter: 1.500

Number of Teeth	Catalog Number	Pitch Diameter	Style	Hub Diameter	Length Thru Bore	Max. Bore	Weight (Lbs.) Approx.
5	C95RC5CR	6.81	C	4.50	3.00	2.50	12.0
6	C95RC6CR	8.00	C	5.00	3.00	3.00	14.0
7	C95RC7CR	9.22	C	6.00	3.00	4.00	18.0
8	C95RC8CR	10.45	C	6.00	3.00	4.00	24.0
9	C95RC9CR	11.70	C	6.00	3.00	4.00	30.0
10	C95RC10CR	12.94	C	6.00	3.00	4.00	40.0
11	C95RC11CR	14.19	C	6.00	3.00	4.00	45.0
12	C95R12CR	15.45	C	6.00	3.00	4.00	61.0
14	C95RC14CR	17.98	C	6.00	3.00	4.00	76.0
15	C95RC15CR	19.24	C	7.00	4.00	5.00	86.0
18	C95RC18CR	23.04	C	8.00	5.00	6.00	115.0
19	C95RC19CR	24.30	C	8.00	5.00	6.00	125.0
22	C95RC22CR	28.11	C	8.00	5.00	6.00	165.0

94R CAST TOOTH SPROCKETS — PITCH 4.00 CHILLED RIM

FOR CHAINS NO.: 4019, SS4, 4, 40SP, 94R, LXS4019

Tooth Face at Pitch Line: .750 — Roller Diameter: 1.500

Number of Teeth	Catalog Number	Pitch Diameter	Style	Hub Diameter	Length Thru Bore	Max. Bore	Weight (Lbs.) Approx.
6	C94RC5CR	8.00	C	5.00	2.75	3.00	22.0
8	C94RC8CR	10.45	C	6.00	3.00	4.00	27.0
9	C94RC9CR	11.70	C	6.00	3.00	4.00	36.0
10	C94RC10CR	12.94	C	6.50	3.00	4.00	39.0
12	C94RC12CR	15.45	C	6.50	3.00	4.00	59.0
14	C94RC14CR	17.98	C	7.00	4.00	5.00	74.0
15	C94RC15CR	19.24	C	7.00	4.00	5.00	84.0
16	C94RC16CR	20.50	C	7.00	4.00	5.00	95.0

102B CAST TOOTH SPROCKETS — PITCH 4.00 CHILLED RIM

FOR CHAINS NO.: A102B, S102B, C102B, SS102B, 6102B, C102B, ER102B, SBS102B

Tooth Face at Pitch Line: 1.875 — Roller Diameter: 1.00

Number of Teeth	Catalog Number	Pitch Diameter	Style	Hub Diameter	Length Thru Bore	Max. Bore	Weight (Lbs.) Approx.
6	C102BC6CR	8.00	C	6.00	4.00	3.94	33.0
7	C102BC7CR	9.22	C	6.00	4.00	3.94	44.0
8	C102BC8CR	10.45	C	6.50	4.00	4.44	47.0
9	C102BC9CR	11.70	C	7.00	5.00	4.56	60.0
10	C102BC10CR	12.94	C	7.00	5.00	4.56	68.0
11	C102BC11CR	14.20	C	7.00	5.00	4.56	72.0
12	C102BC12CR	15.45	C	7.00	5.00	4.56	91.0
13	C102BC13CR	16.71	C	7.00	5.00	4.56	107.0
14	C102BC14CR	17.98	C	7.00	5.00	4.56	110.0
15	C102BC15CR	19.24	C	7.00	5.00	4.56	122.0
16	C102BC16CR	20.50	C	7.00	5.00	4.56	135.0
17	C102BC17CR	21.76	C	7.00	5.00	4.56	145.0
18	C102BC18CR	23.04	C	7.00	5.00	4.56	130.0
19	C102BC19CR	24.30	C	7.00	5.00	4.50	170.0
20	C102BC20CR	25.57	C	10.00	6.00	6.00	175.0
21	C102BC21CR	26.84	C	10.00	6.00	6.00	185.0
22	C102BC22CR	28.11	C	10.00	6.00	6.00	194.0
24	C102BC24CR	30.65	C	10.00	6.00	6.00	214.0

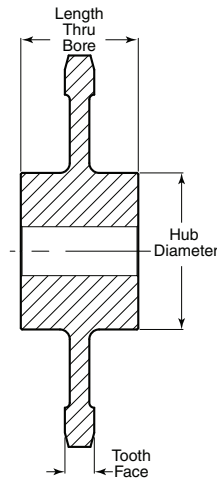
NOTE: Weights and Dimensions are approximate.

Please consult *Metric* for max hub information.

All Cast Sprockets available as Split Sprockets.

CHAINSAVER rims available on request.

HEAT TREAT available upon request.



103 CAST TOOTH SPROCKETS — PITCH 3.075

FOR CHAINS NO.: 103, SBO2103, C9103, WH9103HD, SCA9103, C131, ER131, SBS131, WH82

Tooth Face at Pitch Line: 1.125 — Roller Diameter: 1.218

Number of Teeth	Catalog Number	Pitch Diameter	Style	Hub Diameter	Length Thru Bore	Max. Bore	Weight (Lbs.) Approx.
6	C103C6CR	6.15	C	4.00	3.00	1.94	13.0
7	C103C7CR	7.09	C	4.00	3.00	2.69	23.0
8	C103C8CR	8.04	C	5.50	4.00	3.62	24.0
9	C103C8CR	8.99	C	5.50	4.00	3.62	29.0
10	C103C10CR	9.95	C	6.00	4.00	4.00	29.0
11	C103C11CR	10.91	C	6.00	4.00	4.00	33.0
12	C103C12CR	11.88	C	6.50	4.00	4.50	41.0
13	C103C13CR	12.85	C	6.50	4.00	4.50	48.0
14	C103C14CR	13.82	C	6.50	4.00	4.50	49.0
15	C103C15CR	14.79	C	6.50	4.00	4.50	51.0
16	C103C16CR	15.76	C	6.50	4.00	4.50	76.0
17	C103C17CR	16.74	C	6.50	4.00	4.50	73.0
18	C103C18CR	17.71	C	6.50	4.00	4.50	76.0
19	C103C19CR	18.68	C	7.00	5.00	4.56	93.0
20	C103C20CR	19.66	C	7.00	5.00	4.56	100.0
21	C103C21CR	20.63	C	7.00	5.00	4.56	114.0
22	C103C22CR	21.61	C	7.00	5.00	4.56	122.0
23	C103C23CR	22.58	C	7.00	5.00	4.56	131.0
24	C103C24	23.56	C	7.00	5.00	4.56	121.0
25	C103C25	24.53	C	7.00	5.00	4.56	120.0
26	C103C26	25.51	C	7.00	5.00	4.56	151.0
27	C103C27	26.49	C	7.00	5.00	4.56	157.0
28	C103C28	27.49	C	8.00	6.00	6.00	164.0
29	C103C29	28.44	C	8.00	6.00	6.00	170.0
30	C103C30	29.42	C	8.00	6.00	6.00	177.0
31	C103C31	30.39	C	8.00	6.00	6.00	184.0
32	C103C32	31.37	C	8.00	6.00	6.00	132.0
33	C103C33	32.35	C	8.00	6.00	6.00	197.0
34	C103C34	33.33	C	8.00	6.00	6.00	142.0
35	C103C35	34.30	C	8.00	6.00	6.00	210.0
36	C103C36	35.28	C	8.00	6.00	6.00	216.0
38	C103C38	37.24	C	8.00	6.00	6.00	230.0
40	C103C40	39.19	C	10.00	6.00	8.00	243.0
42	C103C42	41.15	C	10.00	6.00	8.00	256.0
44	C103C44	43.11	C	10.00	6.00	8.00	269.0
48	C103C48	47.02	C	10.00	6.00	8.00	295.0
49	C103C49	48.00	C	10.00	6.00	8.00	301.0

H102 CAST TOOTH SPROCKETS — PITCH 5.00

FOR CHAINS NO.: H102, WD102, WDH102

Tooth Face at Pitch Line: .625 — Roller Diameter: 1.500

Number of Teeth	Catalog Number	Pitch Diameter	Style	Hub Diameter	Length Thru Bore	Max. Bore	Weight (Lbs.) Approx.
6	CWD102C6	10.00	C	6.00	7.25	4.00	65.0
7	CWD102C7	11.52	C	6.00	7.25	4.00	80.0
8	CWD102C8	13.07	C	6.50	7.25	4.50	122.0
8	CWD102C8F	13.07	C	6.50	7.25	4.50	160.0
9	CWD102C9	14.62	C	7.00	8.00	5.00	140.0
10	CWD102C10	16.18	C	7.00	8.00	5.00	143.0
11	CDW102C11	17.75	C	7.00	8.00	5.00	165.0
12	CDW102C12	19.32	C	7.50	8.00	5.50	212.0
13	CDW102C13	20.89	C	7.50	8.00	5.50	245.0

102.5 CAST TOOTH SPROCKETS — PITCH 4.040

FOR CHAINS NO.: A102-1/2, S102-1/2, C102-1/2, SS102-1/2, C102.5, ER102.5, SBS102.5

Tooth Face at Pitch Line: 1.875 — Roller Diameter: 1.375

Number of Teeth	Catalog Number	Pitch Diameter	Style	Hub Diameter	Length Thru Bore	Max. Bore	Weight (Lbs.) Approx.
6	C102.5C6	8.08	C	5.00	3.50	3.94	30.0
8	C102.5C8	10.56	C	6.00	4.00	4.44	55.0
9	C102.5C9	11.81	C	6.00	4.00	5.44	62.0
10	C102.5C10	13.07	C	6.00	4.00	5.94	62.0
11	C102.5C11	14.34	C	6.00	4.00	5.94	76.0
12	C102.5C12	15.61	C	6.00	4.00	5.94	106.0
13	C102.5C13	16.88	C	6.00	4.00	5.94	85.0
14	C102.5C14	18.16	C	6.00	4.00	5.94	94.0
15	C102.5C15	19.43	C	6.00	4.00	5.94	105.0
16	C102.5C16	20.71	C	8.00	5.00	6.00	112.0
17	C102.5C17	21.98	C	8.00	5.00	6.00	122.0
19	C102.5C19	24.55	C	8.00	5.00	6.00	140.0
20	C102.5C20	25.83	C	10.00	6.00	8.00	150.0
22	C102.5C22	28.39	C	10.00	6.00	8.00	175.0
24	C102.5C24	30.95	C	10.00	6.00	8.00	190.0
25	C102.5C25	32.23	C	10.00	6.00	8.00	210.0
26	C102.5C26	33.33	C	10.00	6.00	8.00	230.0

NOTE: Weights and Dimensions are approximate.

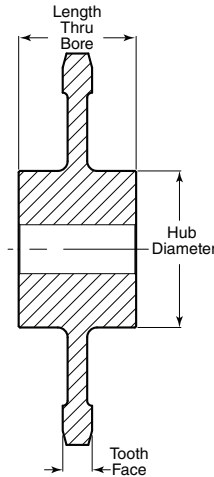
Please consult *Martin* for max hub information.

All Cast Sprockets available as Split Sprockets.

CHAINSAVER rims available on request.

HEAT TREAT available upon request.

Cast Iron Sprockets



H104 CAST TOOTH SPROCKETS — PITCH 6.000

FOR CHAINS NO.: H104, 6104, H104, WDH104
 Tooth Face at Pitch Line: 4.00 — Roller Diameter: 1.50

Number of Teeth	Catalog Number	Pitch Diameter	Style	Hub Diameter	Length Thru Bore	Max. Bore	Weight (Lbs.) Approx.
5	CWD104C5	10.21	C	6.00	4.75	4.00	80.0
6	CWD104C6	12.00	C	6.00	4.75	4.00	91.0
7	CWD104C7	13.83	C	6.00	4.75	4.00	120.0
7	CWD104C7*		C	6.00	4.75	4.00	116.0
8	CWD104C8	15.68	C	7.50	5.00	5.00	122.0
8	CWD104C8*		C	7.50	5.00	5.00	137.0
9	CWD104C9	17.54	C	7.50	5.00	5.00	152.0
9	CWD104C9*		C	7.50	5.00	5.00	167.0
10	CWD104C10	19.42	C	8.00	5.50	6.00	160.0
10	CWD104C10*		C	8.00	5.50	6.00	175.0
11	CWD104C11	21.30	C	8.00	5.50	6.00	172.0
12	CWD104C12	23.18	C	8.00	5.50	6.00	185.0
13	CWD104C13	25.07	C	8.00	5.50	6.00	198.0

*Available Flanged - Consult Factory.

S110 CAST TOOTH SPROCKETS — PITCH 6.000

FOR CHAINS NO.: C110, C110C, SS110, 6110, WS110, RR542, C110, ER110, SBS110, WH110
 Tooth Face at Pitch Line: 1.875 — Roller Diameter: 1.250

Number of Teeth	Catalog Number	Pitch Diameter	Style	Hub Diameter	Length Thru Bore	Max. Bore	Weight (Lbs.) Approx.
6	C110C6	12.00	C	6.00	4.00	3.94	63.0
7	C110C7	13.84	C	7.00	4.00	4.50	68.0
8	C110C8	15.68	C	7.00	5.00	4.50	76.0
9	C110C9	17.54	C	7.00	5.00	4.50	83.0
10	C110C10	19.42	C	7.50	5.00	5.00	88.0
11	C110C11	21.30	C	7.50	5.00	5.00	121.0
12	C110C12	23.18	C	7.50	5.00	5.00	131.0
13	C110C13	25.07	C	7.50	5.00	5.00	152.0
14	C110C14	26.96	C	7.50	5.00	5.00	160.0
15	C110C15	28.86	C	7.50	5.00	5.00	170.0
16	C110C16	30.76	C	8.00	6.00	6.00	181.0
18	C110C18	34.55	C	8.00	6.00	6.00	206.0
19	C110C19	36.46	C	10.00	6.00	6.00	214.0
24	C110C24	45.97	C	10.00	8.00	8.00	340.0

W106 CAST TOOTH SPROCKETS — PITCH 6.000

FOR CHAINS NO.: W106 WH106HD, WR106, WR106HD, WH110
 Tooth Face at Pitch Line: 1.50 — Roller Diameter: 1.25

Number of Teeth	Catalog Number	Pitch Diameter	Style	Hub Diameter	Length Thru Bore	Max. Bore	Weight (Lbs.) Approx.
5	C106C5CR	10.15	C	6.00	4.75	4.00	30.0
8	C106C8CR	15.68	C	7.00	4.75	5.00	85.0
9	C106C9CR	17.54	C	7.00	4.75	5.00	100.0

NOTE: Weights and Dimensions are approximate.
 Please consult *Metric* for max. hub information.
 All Cast Sprockets available as Split Sprockets.

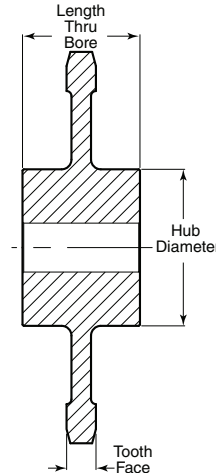
CHAINSAVER rims available on request.
 HEAT TREAT available upon request.

WD110 CAST TOOTH SPROCKETS — PITCH 6.000

FOR CHAINS NO.: H-110, 6110 (DRAG), WD110, WSD110, WS110 (PT-C), WDH2210, H110, WD110, WHD110, WD113,
 Tooth Face at Pitch Line: 8.875 — Roller Diameter: 1.500

Number of Teeth	Catalog Number	Pitch Diameter	Style	Hub Diameter	Length Thru Bore	Max. Bore	Weight (Lbs.) Approx.
5	CWD110C5	10.15	C	6.00	3.00	4.00	120.0
6	CWD110C6*	12.00	C	6.00	3.00	4.00	129.0
7	CWD110C7*	13.84	C	7.00	3.00	5.00	172.0
8	CWD110C8*	15.68	C	8.00	3.50	6.00	202.0
9	CWD110C9*	17.54	C	8.00	3.50	6.00	240.0
10	CWD110C10*	19.42	C	8.00	3.50	6.00	253.0
11	CWD110C11*	21.30	C	8.00	4.00	6.00	265.0
12	CWD110C12*	23.18	C	8.00	4.00	6.00	352.0
15	CWD110C15	28.86	C	8.00	4.00	6.00	610.0

*Available Flanged - Consult Factory.



111SP CAST TOOTH SPROCKETS — DOUBLE PITCH 4.760 & 7.240 CHILLED RIM

FOR CHAINS NO.: C111 Spec., SS111 Spec., 6111 Spec., ER111SP

Tooth Face at Pitch Line: 2.375 — Roller Diameter: 1.438

Number of Teeth	Catalog Number	Pitch Diameter	Style	Hub Diameter	Length Thru Bore	Max. Bore	Weight (Lbs.) Approx.
8	CDP111C8CR	15.74	C	7.50	6.00	5.00	90.0
10	CDP111C10CR	19.40	C	7.50	6.00	5.00	107.0
12	CDP111C128CR	23.22	C	8.00	6.00	6.00	190.0

111 CAST TOOTH SPROCKETS — PITCH 4.760 with CHILLED RIM

FOR CHAINS NO.: 111, A111, A111-WS, ES111, WHX111, C11, SBS111, C111, C111C, SS111, 6111

Tooth Face at Pitch Line: 2.375 — Roller Diameter: 1.438

Number of Teeth	Catalog Number	Pitch Diameter	Style	Hub Diameter	Length Thru Bore	Max. Bore	Weight (Lbs.) Approx.
6	C111C6CR	9.52	C	7.00	4.00	4.00	64.0
7	C111C7CR	10.99	C	7.00	4.00	5.00	81.0
8	C111C8CR	12.44	C	7.50	6.00	5.06	98.0
9	C111C9CR	13.92	C	7.00	6.00	5.06	107.0
10	C111C10CR	15.40	C	7.50	6.00	5.06	122.0
11	C111C11CR	16.90	C	7.50	6.00	5.06	136.0
12	C111C12CR	18.39	C	7.50	6.00	5.06	145.0
13	C111C13CR	19.89	C	7.50	6.00	5.06	120.0
14	C111C14CR	21.39	C	8.00	6.00	6.00	125.0
15	C111C15CR	24.35	C	8.00	6.00	6.00	180.0
16	C111C16CR	24.35	C	8.00	6.00	6.00	189.0
17	C111C17CR	25.90	C	8.00	6.00	6.00	218.0
18	C111C18CR	27.41	C	8.00	6.00	6.00	228.0
20	C111C20CR	30.34	C	8.00	6.00	6.00	248.0
22	C111C22CR	33.44	C	10.00	6.00	8.00	261.0
24	C111C24CR	36.47	C	10.00	6.00	8.00	274.0

WD112 CAST TOOTH SPROCKETS — PITCH 8.00

FOR CHAINS NO.: H112, WD112, WSD112, WD112, SDH112

Tooth Face at Pitch Line: 9.000 — Roller Diameter: 1.500

Number of Teeth	Catalog Number	Pitch Diameter	Style	Hub Diameter	Length Thru Bore	Max. Bore	Weight (Lbs.) Approx.
7	CWD112C7	18.44	C	8.00	6.00	6.938	260.0
8	CWD112C8	20.90	C	8.00	6.00	6.938	281.0
9	CWD112C9	23.39	C	8.00	6.00	6.938	308.0
10	CWD112C10	25.89	C	8.00	6.00	6.938	346.0

WD116 CAST TOOTH SPROCKETS — PITCH 8.00 Alloy Iron

FOR CHAINS NO.: WDH116, WDH2316, WD116, 8116, HC8116, WS116, WSD116

Tooth Face at Pitch Line: 12.750 — Roller Diameter: 1.625

Number of Teeth	Catalog Number	Pitch Diameter	Style	Hub Diameter	Length Thru Bore	Max. Bore	Weight (Lbs.) Approx.
6	CWD116C6*	16.00	C	7.00	6.00	5.00	210.0
7	CWD116C7*	18.44	C	7.00	6.00	5.00	303.0
8	CWD116C8*	20.90	C	8.00	6.00	6.00	346.0
9	CWD116C9*	23.39	C	8.00	6.00	6.00	442.0
10	CDWD116C	25.92	C	8.00	6.00	6.00	450.0

*Available Flanged - Consult Factory.

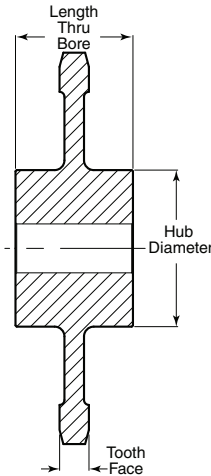
NOTE: Weights and Dimensions are approximate.

Please consult *Martin* for max. hub information.

All Cast Sprockets available as Split Sprockets.

CHAINSAVER rims available on request.

HEAT TREAT available upon request.



WD119 CAST TOOTH SPROCKETS — PITCH 6.00

FOR CHAINS NO.: SD-19, SD19A, CC119, HC119
Tooth Face at Pitch Line: 3.625 — Roller Diameter: 2.000

Number of Teeth	Catalog Number	Pitch Diameter	Style	Hub Diameter	Hub Length	Max. Bore	Weight (Lbs.) Approx.
6	CWD119C6	12.00	C	6.00	5.00	4.00	95.0

WD120 CAST TOOTH SPROCKETS — PITCH 6.00

FOR CHAINS NO.: H-120, WD120, WDH120
Tooth Face at Pitch Line: 8.750 — Roller Diameter: 2.000

Number of Teeth	Catalog Number	Pitch Diameter	Style	Hub Diameter	Length Thru Bore	Max. Bore	Weight (Lbs.) Approx.
6	CWD120C6	12.00	C	6.00	5.00	5.00	130.0
8	CWD120C8	15.68	C	6.00	5.00	5.00	250.0
9	CWD120C9	17.54	C	8.00	5.00	6.00	232.0
10	CWD120C10	19.42	C	8.00	5.00	6.00	215.0
11	CWD120C11	21.30	C	8.00	5.00	6.00	308.0

H121 CAST TOOTH SPROCKETS — PITCH 9.00

FOR CHAINS NO.: SD21, SD21A, CC121, HC121
Tooth Face at Pitch Line: 8.625 — Roller Diameter: 2.500

Number of Teeth	Catalog Number	Pitch Diameter	Style	Hub Diameter	Length Thru Bore	Max. Bore	Weight (Lbs.) Approx.
8	CWD121C8	23.52	C	10.00	6.00	8.00	130.0

WD122 CAST TOOTH SPROCKETS — PITCH 8.00 CHILLED RIM

FOR CHAINS NO.: WD122, WDH122, H-122
Tooth Face at Pitch Line: 8.750 — Roller Diameter: 2.000

Number of Teeth	Catalog Number	Pitch Diameter	Style	Hub Diameter	Hub Length	Max. Bore	Weight (Lbs.) Approx.
6	CWD122C6CR	16.00	C	7.50	5.00	6.00	180.0
6	CWD122C6CRF*	16.00	C	8.00	5.00	6.00	270.0
7	CWD122C7CR	18.44	C	8.00	5.00	6.00	210.0

* Standard Flange Width is 16-3/4"

WD123 CAST TOOTH SPROCKETS — PITCH 9.00

FOR CHAINS NO.: CC123, SD23, SD23A, CC123, HC123
Tooth Face at Pitch Line: 6.250 — Roller Diameter: 2.50

Number of Teeth	Catalog Number	Pitch Diameter	Style	Hub Diameter	Length Thru Bore	Max. Bore	Weight (Lbs.) Approx.
8	CWD123C8	23.52	C	8.00	6.00	6.44	481.0

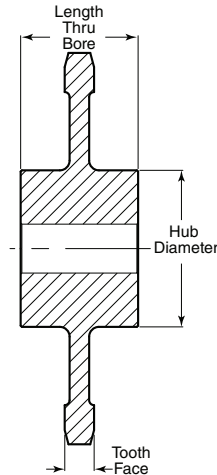
NOTE: Weights and Dimensions are approximate.

Please consult *Martin* for max. hub information.

All Cast Sprockets available as Split Sprockets.

CHAINSAVER rims available on request.

HEAT TREAT available upon request.



H124 CAST TOOTH SPROCKETS — PITCH 4.00 - CHILLED RIM

H124, WHX124, WHX124HD, WSX124, H87, H124, WS124, WR124, WH124, C124

Tooth Face at Pitch Line: 1.500 — Roller Diameter: 1.438

Number of Teeth	Catalog Number	Pitch Diameter	Style	Hub Diameter	Length Thru Bore	Max. Bore	Weight (Lbs.) Approx.
7	C124C7CR	9.22	C	6.00	4.00	3.94	38.0
8	C124C8CR	10.45	C	6.50	4.25	4.94	52.0
9	C124C9CR	11.70	C	6.50	4.25	5.44	45.0
10	C124C10CR	12.94	C	7.00	4.25	5.44	73.0
11	C124C11CR	14.20	C	7.00	4.25	5.95	75.0
12	C124C12CR	15.45	C	7.00	4.25	6.00	80.0
13	C124C13CR	16.71	C	7.00	5.25	6.00	100.0
14	C124C15CR	17.98	C	7.00	5.25	6.00	103.0
15	C124C16CR	19.24	C	7.00	5.25	6.00	112.0
16	C124C17CR	20.50	C	7.00	5.25	6.00	125.0
17	C124C18CR	21.77	C	7.50	5.50	6.50	135.0
18	C124C19CR	23.04	C	7.50	5.50	6.50	145.0
19	C124C20CR	24.30	C	7.50	5.50	6.50	154.0
20	C124C22CR	25.57	C	8.00	6.00	6.50	161.0
22	C124C27CR	28.11	C	8.00	6.00	6.50	176.0
27	C124C28CR	34.46	C	10.00	6.00	8.00	240.0
30	C124C30CR	38.27	C	10.00	6.00	8.00	290.0
34	C124C34CR	43.35	C	10.00	6.00	8.00	300.0
37	C124C37CR	47.18	C	10.00	6.00	8.00	410.0

NOTE: Weights and Dimensions are approximate.

Please consult *Martin* for max. hub information.

All Cast Sprockets available as Split Sprockets.

CHAINSAVER rims available on request.

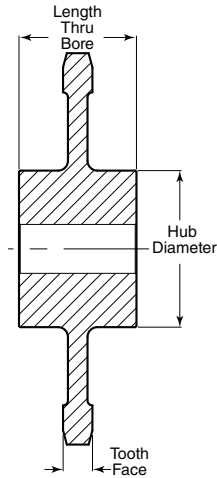
HEAT TREAT available upon request.

130 CAST TOOTH SPROCKETS — PITCH 4.000 CHILLED RIM

FOR CHAINS NO.: WHT130/138, 131, 138, WH784, 130RT, 138RT, H-130, H-138, WS784

Tooth Face at Pitch Line: 1.000 — Roller Diameter: 1.000

Number of Teeth	Catalog Number	Pitch Diameter	Style	Hub Diameter	Hub Length	Max. Bore	Weight (Lbs.) Approx.
5	C130C5CR	6.77	C	3.00	2.75	2.00	18.0
6	C130C6CR	8.00	C	4.50	3.00	2.50	20.0
7	C130CCR	9.22	C	4.75	3.00	3.94	24.0
8	C130C8CR	10.45	C	5.25	3.00	4.50	27.0
9	C130C9CR	11.70	C	5.75	3.00	4.50	33.0
10	C130C10CR	12.94	C	6.00	4.00	5.00	46.0
11	C130C11CR	14.20	C	6.00	4.00	5.00	54.0
12	C130C12CR	15.45	C	6.50	4.00	5.50	73.0
13	C130C13CR	16.71	C	6.50	4.00	5.50	58.0
14	C130C14CR	17.95	C	6.50	4.00	5.50	80.0
16	C130C16CR	20.50	C	6.50	4.00	5.50	75.0



132 CAST TOOTH SPROCKETS — PITCH 6.050 CHILLED RIM

FOR CHAINS NO.: WHX3855, WHX2855, C132, WHX132, WSX132, ER150, ERA150, WHX150, WHX155, WHX157, WHX159, AX132, AX132WS, AZ132WS, WHX132, WHX150, SX150, SXA150, WHX157, WHX159, C132, C132C, MBP132, MBP132C, PW132, SS150+, 6150PM, A132, A132WS, C132, C132M, C132W1, C132W2, CR-N132, DW132, HSB150, MPB132, MPBP132C, SXA150, W132, W132, W157, WH132, WH132HD, WH132XHD, WH150, WH150HD, WH150XHD, WH157, WH2012, WH2855, WH3855, WH3855

Tooth Face at Pitch Line: 2.750 — Roller Diameter: 1.750

Number of Teeth	Catalog Number	Pitch Diameter	Style	Hub Diameter	Length Thru Bore	Max. Bore	Weight (Lbs.) Approx.
5	C132C5CR	10.20	C	6.00	6.00	4.00	59.0
6	C132C6CR	12.10	C	6.00	6.00	4.00	100.0
8	C132C8CR*	15.81	C	8.00	7.00	6.00	163.0
9	C132C9CR*	17.69	C	8.00	7.00	6.00	165.0
10	C132C10CR*	19.57	C	8.00	7.00	6.00	186.0
11	C132C11CR*	21.47	C	8.00	8.00	6.00	215.0
12	C132C12CR*	23.38	C	8.00	8.00	6.00	258.0
13	C132C13CR	25.28	C	8.00	8.00	6.00	280.0
14	C132C14CR	27.19	C	10.00	8.00	8.00	296.0
15	C132C15CR	29.10	C	10.00	8.00	8.00	372.0
16	C132C16CR	31.01	C	10.00	8.00	8.00	302.0
18	C132C17CR	34.84	C	10.00	8.00	8.00	445.0
19	C132C18CR	36.76	C	10.00	8.00	8.00	486.0
20	C132C19CR	38.67	C	10.00	8.00	8.00	495.0

*Available Flanged - Consult Factory.

NOTE: Weights and Dimensions are approximate.
Please consult *Metric* for max hub information.
All Cast Sprockets available as Split Sprockets.

CHAINSAVER rims available on request.

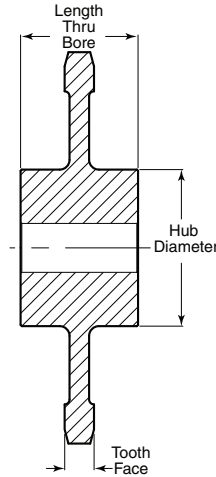
HEAT TREAT available upon request.

183 CAST TOOTH SPROCKETS — PITCH 3.000 CHILLED RIM

FOR CHAINS NO.: 53R, 3013, 1183, 1583, SR183, MSR-3013, RS3013

Tooth Face at Pitch Line: 0.8125 — Roller Diameter: 1.500

Number of Teeth	Catalog Number	Pitch Diameter	Style	Hub Diameter	Length Thru Bore	Max. Bore	Weight (Lbs.) Approx.
6	C183C6CR	6.00	C	4.00	3.00	2.68	10.0
7	C183C7CR	6.92	C	4.00	3.00	2.68	14.0
8	C183C8CR	7.84	C	4.00	3.00	2.68	14.0
9	C183C9CR	8.77	C	5.00	3.00	2.94	22.0
10	C183C10CR	9.71	C	5.00	3.00	2.94	21.0
11	C183C11CR	10.65	C	5.00	3.00	2.94	30.0
12	C183C12CR	11.59	C	5.00	3.00	3.18	28.0
13	C183C13CR	12.54	C	6.00	3.00	3.49	38.0
14	C183C14CR	13.48	C	6.00	4.00	4.00	40.0
15	C183C15CR	14.43	C	6.00	4.00	4.00	43.0
16	C183C16CR	15.38	C	6.00	4.00	4.00	46.0
18	C183C18CR	17.28	C	6.00	4.00	4.00	55.0
19	C183C19CR	18.23	C	6.00	4.00	4.00	67.0
20	C183C20CR	19.18	C	8.00	4.00	6.00	65.0
24	C183C24CR	22.98	C	8.00	4.00	6.00	75.0
25	C183C25CR	23.94	C	8.00	4.00	6.00	85.0
38	C183C38CR	36.33	C	8.00	4.00	6.00	140.0



188 CAST TOOTH SPROCKETS — PITCH 4.000 CHILLED RIM

FOR CHAINS NO.: 91R, 4113, 1188, SR188, 2188, RS2188, RS4113. NOT for C-188 (2.609P) see W-78, LXS-4113, SS2188

Tooth Face at Pitch Line: 0.9375 — Roller Diameter: 1.750

Number of Teeth	Catalog Number	Pitch Diameter	Style	Hub Diameter	Length Thru Bore	Max. Bore	Weight (Lbs.) Approx.
5	C188C5CR	6.78	C	4.00	3.00	2.50	14.0
6	C188C6CR	8.00	C	4.00	3.00	3.44	15.0
7	C188C7CR	9.22	C	4.00	3.00	3.68	27.0
8	C188C8CR	10.45	C	6.00	4.00	3.94	35.0
9	C188C9CR	11.70	C	6.00	4.00	3.94	32.0
10	C188C10CR	12.94	C	6.00	4.00	3.94	43.0
11	C188C11CR	14.19	C	6.50	4.00	4.44	50.0
12	C188C12CR	15.45	C	6.50	4.00	4.44	60.0
13	C188C13CR	16.71	C	8.00	5.00	5.00	36.0
15	C188C15CR	19.24	C	8.00	5.00	5.00	39.0
19	C188C19CR	24.30	C	10.00	5.00	6.00	48.0
24	C188C24CR	30.64	C	10.00	5.00	6.00	58.0

194 CAST TOOTH SPROCKETS — PITCH 4.000 CHILLED RIM

FOR CHAINS NO.: US90R, 83R, 4215, SR194, GL-194, LXS-4216, 83-R, US-90-R, SR-194, 14-1/2, 194, U194, 2066, S1194, 1400, 1594

Tooth Face at Pitch Line: 1.000 — Roller Diameter: 2.000

Number of Teeth	Catalog Number	Pitch Diameter	Style	Hub Diameter	Hub Length	Max. Bore	Weight (Lbs.) Approx.
7	C194C7CR	9.22	C	5.00	4.00	3.62	30.0
8	C194C8CR	10.45	C	5.00	4.00	3.62	36.0
9	C194C9CR	11.70	C	5.00	4.00	3.62	40.0
10	C194C10CR	12.94	C	6.00	4.00	3.62	47.0
11	C194C11CR	14.20	C	6.50	4.00	3.62	62.0
12	C194C12CR	15.46	C	6.50	4.00	3.62	55.0
13	C194C13CR	16.71	C	6.50	4.00	3.62	64.0
14	C194C14CR	17.98	C	6.50	4.00	3.62	90.0
15	C194C15CR	19.14	C	7.50	4.00	3.62	81.0
19	C194C19CR	24.30	C	7.50	4.00	3.62	121.0

NOTE: Weights and Dimensions are approximate.

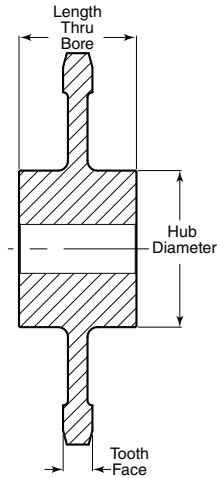
Please consult *Martin* for max hub information.

All Cast Sprockets available as Split Sprockets.

CHAINSAVER rims available on request.

HEAT TREAT available upon request.

Cast Iron Sprockets



196 CAST TOOTH SPROCKETS — PITCH 6.000 CHILLED RIM

FOR CHAINS NO.: SR196, 1114, 1116, 604R, 627R, 634R, 6018, SRC196, SRD1960, US196R, US196RA42, SR911, SRC196, SRD1960, MSR-1116, MSR-6018, GL-196, SS-1114, 604R, 196, 2126

Tooth Face at Pitch Line: 1.000 — Roller Diameter: 2.000

Number of Teeth	Catalog Number	Pitch Diameter	Style	Hub Diameter	Length Thru Bore	Max. Bore	Weight (Lbs.) Approx.
5	C196C5CR	10.21	C	6.00	4.00	4.00	28.0
6	C196C6CR	12.00	C	6.00	4.00	4.00	33.0
7	C196C7CR	13.83	C	6.50	4.00	4.00	49.0
8	C196C8CR	15.68	C	6.50	5.00	4.56	84.0
9	C196C9CR	17.54	C	6.50	5.00	4.56	93.0
10	C196C10CR	19.42	C	7.00	5.00	4.56	114.0
12	C196C12CR	23.18	C	7.00	5.00	4.56	148.0
13	C196C13CR	25.07	C	7.00	5.00	4.56	119.0
14	C196C14CR	26.96	C	7.00	5.00	4.56	128.0
16	C196C16CR	30.76	C	8.00	5.00	4.56	160.0
18	C196C18CR	34.55	C	8.00	5.00	4.56	195.0
19	C196C19CR	36.45	C	8.00	5.00	4.56	210.0
25	C196C25CR	47.87	C	8.00	5.00	4.56	304.0

197 CAST TOOTH SPROCKETS — PITCH 6.000 CHILLED RIM

FOR CHAINS NO.: 1617, 607R, 614R, 6018, 1130, CC5, RS2190 197, SR-3130, GL-197, SS-2190, MR-1130, 1617, 614, 607R, CC5, LXS-6238

Tooth Face at Pitch Line: 1.125 — Roller Diameter: 2.500

Number of Teeth	Catalog Number	Pitch Diameter	Style	Hub Diameter	Length Thru Bore	Max. Bore	Weight (Lbs.) Approx.
6	C197C6CR	12.00	C	6.00	5.00	4.75	45.0
7	C197C7CR	13.83	C	6.50	5.00	4.75	60.0
8	C197C8CR	15.68	C	6.50	5.00	4.75	75.0
9	C197C9CR	17.54	C	6.50	5.00	4.75	84.0
10	C197C10CR	19.42	C	7.00	5.00	4.75	94.0
11	C197C11CR	21.30	C	7.00	5.00	4.75	100.0
12	C197C12CR	23.18	C	7.00	5.00	4.75	125.0
15	C197C15CR	28.86	C	7.00	5.00	4.75	178.0

348 CAST TOOTH SPROCKETS — PITCH 3.031 CHILLED RIM

FOR CHAINS NO.: X348, S348, N348, 348

Tooth Face at Pitch Line: 0.687 — Roller Diameter: 1.0625

Number of Teeth	Catalog Number	Pitch Diameter	Style	Hub Diameter	Length Thru Bore	Max. Bore	Weight (Lbs.) Approx.
4	C348C4CR	7.92	C	4.00	4.00	2.00	11.0
5	C348C5CR	9.71	C	4.00	4.00	2.00	19.0
6	C348C6CR	11.59	C	5.00	4.00	3.00	24.0
7	C348C7CR	13.48	C	5.00	4.00	3.00	43.0
8	C348C8CR	15.54	C	5.00	4.00	3.00	43.0
9	C348C9CR	17.28	C	7.00	4.00	5.00	51.0
10	C348C10CR	19.18	C	7.00	4.00	5.00	68.0
11	C348C11CR	21.03	C	7.00	4.00	5.00	75.0
12	C348C12CR	22.98	C	7.00	4.00	5.00	83.0
16	C348C16CR	30.60	C	7.00	4.00	5.00	120.0
19	C348C19CR	36.33	C	7.00	4.00	5.00	159.0

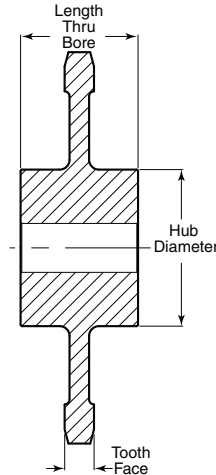
NOTE: Weights and Dimensions are approximate.

Please consult *Martin* for max hub information.

All Cast Sprockets available as Split Sprockets.

CHAINSAVER rims available on request.

HEAT TREAT available upon request.



458 CAST TOOTH SPROCKETS — PITCH 4.031 CHILLED RIM

FOR CHAINS NO.: S458, X458, 458

Tooth Face at Pitch Line: 0.875 — Roller Diameter: 1.380

Number of Teeth	Catalog Number	Pitch Diameter	Style	Hub Diameter	Length Thru Bore	Max. Bore	Weight (Lbs.) Approx.
3	C458C3CR	7.95	C	4.50	5.00	2.00	14.0
4	C458C3CR	10.54	C	5.00	5.00	3.00	27.0
5	C458C3CR	13.05	C	6.00	5.00	5.06	40.0
6	C458C3CR	15.58	C	6.00	5.00	5.06	63.0
7	C458C3CR	18.12	C	7.00	5.00	5.06	70.0
8	C458C3CR	20.66	C	7.00	5.00	5.06	93.0
9	C458C3CR	23.13	C	7.50	5.00	5.06	130.0
10	C458C3CR	25.77	C	7.50	5.00	5.06	145.0
11	C458C3CR	28.33	C	7.50	5.00	5.06	193.0
12	C458C3CR	30.68	C	7.50	5.00	5.06	200.0
14	C458C3CR	35.87	C	8.00	5.00	5.06	228.0
19	C458C3CR	48.63	C	8.00	5.00	5.06	345.0

468 CAST TOOTH SPROCKETS — PITCH 4.031 CHILLED RIM

FOR CHAINS NO.: 468, S468, 468A,

Tooth Face at Pitch Line: 1.375 — Roller Diameter: 1.880

Number of Teeth	Catalog Number	Pitch Diameter	Style	Hub Diameter	Length Thru Bore	Max. Bore	Weight (Lbs.) Approx.
4	C468C4CR	10.53	C	5.00	4.00	3.00	36.0
5	C468C5CR	13.05	C	6.00	4.00	4.00	52.0
6	C468C6CR	15.58	C	6.50	4.00	4.50	80.0
7	C468C7CR	18.12	C	6.50	4.00	4.50	92.0
8	C468C8CR	20.66	C	6.50	4.00	4.50	118.0
9	C468C9CR	23.21	C	7.00	4.00	5.00	148.0
10	C468C10CR	25.77	C	7.00	4.00	5.00	160.0
12	C468C12CR	30.88	C	7.00	4.00	5.00	240.0

WD480 CAST TOOTH SPROCKETS — PITCH 8.000 CHILLED RIM

FOR CHAINS NO.: H480, 8480, 480, WS480, WSD480,
WD480, WDH480, WDH2380, WDH680, WDH580

Tooth Face at Pitch Line: 11.125 — Roller Diameter: 2.00

Number of Teeth	Catalog Number	Pitch Diameter	Style	Hub Diameter	Length Thru Bore	Max. Bore	Weight (Lbs.) Approx.
6	CWD480C6*	16.00	C	7.00	5.00	5.00	237.0
7	CWD480C7*	18.44	C	7.50	5.00	5.00	295.0
8	CWD480C8*	20.90	C	7.50	6.00	5.00	290.0
9	CWD480C9*	23.39	C	7.50	6.00	5.00	380.0
10 \diamond	CWD480C10*	25.89	C	8.00	6.00	5.00	381.0
11 \diamond	CWD480C11	28.40	C	8.00	6.00	5.00	505.0

*Available Flanged - Consult Factory.

483 CAST TOOTH SPROCKETS — PITCH 4.000

FOR CHAINS NO.: 483, S4830K23

Tooth Face at Pitch Line: 0.875 — Roller Diameter: 0.940

Number of Teeth	Catalog Number	Pitch Diameter	Style	Hub Diameter	Length Thru Bore	Max. Bore	Weight (Lbs.) Approx.
8	C483C8	10.45	C	5.00	5.00	2.75	30.0
9	C483C9	11.70	C	5.00	5.00	2.75	35.0
12	C483C12	15.45	C	6.00	5.00	3.00	65.0
13	C483C13	16.72	C	6.00	5.00	3.00	70.0
19	C483C19	24.30	C	8.00	5.00	6.00	124.0

NOTE: Weights and Dimensions are approximate.

Please consult *Martin* for max. hub information.

All Cast Sprockets available as Split Sprockets.

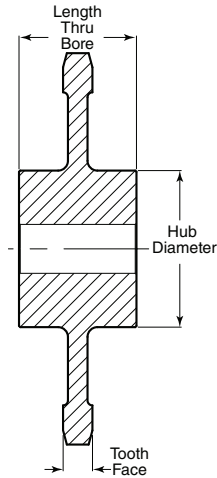
CHAINSAVER rims available on request.

HEAT TREAT available upon request.

* Standard Flange Plain Chain is 18-5/8" OAW; Standard Chain is 22" OAW.

\diamond Special machining charges apply.

Cast Iron Sprockets



520 CAST TOOTH SPROCKETS — PITCH 2.563 CHILLED RIM

FOR CHAINS NO.: A520, 520-RX, SS520, IS2625, SS-520, IS-2625, 520RX

Tooth Face at Pitch Line: 0.875 — Roller Diameter: 1.125

Number of Teeth	Catalog Number	Pitch Diameter	Style	Hub Diameter	Length Thru Bore	Max. Bore	Weight (Lbs.) Approx.
10	C520C10CR	8.29	C	4.00	3.00	2.00	4.0
12	C520C12CR	9.90	C	4.00	3.00	2.00	5.0
14	C520C14CR	11.53	C	5.00	3.00	2.50	34.0
18	C520C18CR	14.76	C	5.00	3.00	2.50	65.0
24	C520C24CR	19.64	C	6.00	3.00	3.00	10.0
30	C520C30CR	24.52	C	7.50	3.00	3.00	100.0
40	C520C40CR	32.67	C	7.50	3.00	3.00	165.0

531 CAST TOOTH SPROCKETS — PITCH 4.000 CHILLED RIM

FOR CHAINS NO.: 531, 89R, 149, 4328, SS149, S531, LXS4328, IS4328, S531, MSR4328, RS4328

Tooth Face at Pitch Line: 1.187 — Roller Diameter: 2.25

Number of Teeth	Catalog Number	Pitch Diameter	Style	Hub Diameter	Length Thru Bore	Max. Bore	Weight (Lbs.) Approx.
6	C531C6	8.00	C	5.00	4.00	2.94	34.0
8	C531C8	10.45	C	6.00	4.00	3.44	34.0
10	C531C10	12.94	C	7.00	4.00	3.94	47.0
12	C531C12	15.45	C	7.00	4.00	4.44	66.0
14	C531C14	17.99	C	7.50	4.00	5.00	75.0
15	C531C15	19.24	C	7.50	4.00	5.00	85.0
16	C531C16	20.50	C	7.50	4.00	5.00	94.0
17	C531C17	21.77	C	7.50	4.00	5.00	107.0
19	C531C19	24.30	C	7.50	4.00	5.00	120.0

625R CAST TOOTH SPROCKETS — PITCH 6.000 CHILLED RIM

FOR CHAINS NO.: 625R, 626R, 629R, SS658, 625R, 1258, 1604R

Tooth Face at Pitch Line: 1.125 — Roller Diameter: 3.000

Number of Teeth	Catalog Number	Pitch Diameter	Style	Hub Diameter	Length Thru Bore	Max. Bore	Weight (Lbs.) Approx.
6	C625C6CR	12.00	C	6.00	4.00	4.00	62.0
8	C625C8CR	15.68	C	7.00	4.00	5.00	78.0
10	C625C10CR	19.42	C	8.00	5.00	6.00	96.0
12	C625C12CR	23.18	C	8.00	5.00	6.00	114.0
13	C625C13CR	25.07	C	8.00	5.00	6.00	123.0

667 CAST TOOTH SPROCKETS — PITCH 2.250 CHILLED RIM

FOR CHAINS NO.: 667, J-X-K-53

Tooth Face at Pitch Line: 1.000 — Roller Diameter: 1.062

Number of Teeth	Catalog Number	Pitch Diameter	Style	Hub Diameter	Length Thru Bore	Max. Bore	Weight (Lbs.) Approx.
6	C667C6CR	4.50	C	2.50	2.50	1.50	9.0
8	C667C8CR	5.87	C	3.00	2.75	1.50	10.0
11	C667C11CR	7.98	C	4.00	2.75	2.00	15.0

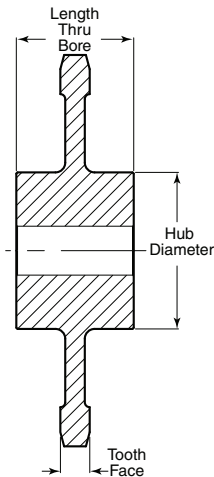
NOTE: Weights and Dimensions are approximate.

Please consult *Martin* for max hub information.

All Cast Sprockets available as Split Sprockets.

CHAINSAVER rims available on request.

HEAT TREAT available upon request.



678 CAST TOOTH SPROCKETS — PITCH 6.031 CHILLED RIM

FOR CHAINS NO.: X678, S678, 678

Tooth Face at Pitch Line: 1.187 — Roller Diameter: 2.00

Number of Teeth	Catalog Number	Pitch Diameter	Style	Hub Diameter	Length Thru Bore	Max Bore	Weight (Lbs.) Approx.
3	C678C3CR	12.06	C	6	4.50	3.00	30.0
4	C678C4CR	15.72	C	6.00	4.50	3.00	77.0
5	C678C5CR	19.52	C	7	4.50	3.50	93.0
6	C678C6CR	23.34	C	8	4.50	4.00	146.0
7	C678C7CR	27.03	C	8.50	4.50	4.00	190.0
8	C678C8CR	30.83	C	8.50	4.50	4.00	240.0

Plate Center with Lightening holes

698 CAST TOOTH SPROCKETS — PITCH 6.031 CHILLED RIM

FOR CHAINS NO.: 698, S698, S698HD

Tooth Face at Pitch Line: 1.375 — Roller Diameter: 2.69

Number of Teeth	Catalog Number	Pitch Diameter	Style	Hub Diameter	Length Thru Bore	Max Bore	Weight (Lbs.) Approx.
5	C698C5CR	19.52	C	8.00	5.00	6.00	122.0
6	C698C6CR	23.38	C	8	5.00	6.00	135.0
7	C698C7CR	26.96	C	8.00	5.00	6.00	200.0
8	C698C8CR	30.92	C	8	5.00	6.00	275.0

NOTE: Weights and Dimensions are approximate.

Please consult *Martin* for max hub information.

All Cast Sprockets available as Split Sprockets.

CHAINSAVER rims available on request.

HEAT TREAT available upon request.

CS720S CAST TOOTH SPROCKETS — PITCH 6.000 CHILLED RIM

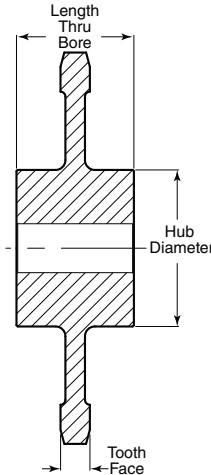
FOR CHAINS NO.: CS720S, WH720CS

Tooth Face at Pitch Line: 1.00 — Roller Diameter: 1.44

Number of Teeth	Catalog Number	Pitch Diameter	Style	Hub Diameter	Length Thru Bore	Max Bore	Weight (Lbs.) Approx.
6.5P-13T	C720C13HCR*	12.89	C	6.00	4.00	3.00	65.0
8.5P-17T	C720C17HCR*	16.59	C	6.00	4.00	3.00	98.2
9	C720C9CR	17.51	C	6.00	4.00	3.00	80.0
9.5P-19T	C720C19HCR*	18.48	C	6.00	4.00	3.00	115.3
10	C720C10CR	19.42	C	6.00	4.00	3.00	95.0
10.5P-21T	C720C21HCR*	20.33	C	7.00	5.00	3.50	110.0
11	C720C11CR	21.30	C	7.00	5.00	3.50	105.0
11.5P-23T	C720C23HCR*	22.24	C	7.00	5.00	3.50	127.7
12.5P-25T	C720C25HCR*	24.12	C	7.00	5.00	3.50	141.3
13	C720C13CR	25.07	C	7.00	5.00	3.50	130.0
16	C720C16CR	30.75	C	7.00	5.00	3.50	180.0

* Regular and DoubleLife (Hunting Tooth) Designs

Cast Iron Sprockets



720S CAST TOOTH SPROCKETS — PITCH 6.000 CHILLED RIM

FOR CHAINS NO.: 720S, 720

Tooth Face at Pitch Line: 1.00 — Roller Diameter: 1.4375

Number of Teeth	Catalog Number	Pitch Diameter	Style	Hub Diameter	Length Thru Bore	Max Bore	Weight (Lbs.) Approx.
6	C720C6CR	12.00	C	6.00	4.00	3.00	47.0
6.5P-13T	C720C13HCR*	12.91	C	6.00	4.00	3.00	53.1
8	C720C8CR	15.68	C	6.00	4.00	3.00	70.0
8.5P-17T	C720C17HCR*	16.61	C	6.00	4.00	3.00	92.2
9	C720C9CR	17.51	C	6.00	4.00	3.00	80.0
9.5P-19T	C720C19HCR*	18.48	C	6.00	4.00	3.00	107.3
10	C720C10CR	19.42	C	6.00	4.00	3.00	95.0
10.5P-21T	C720C21HCR*	20.33	C	6.00	4.00	3.00	110.0
11	C720C11CR	21.30	C	6.00	4.00	3.00	105.0
11.5P-25T	C720C25HCR*	24.12	C	6.00	4.00	3.00	131.5
12	C720C12CR	23.18	C	7.00	5.00	3.50	120.0
12.5P-25T	C720C25HCR*	24.12	C	7.00	5.00	3.50	131.5
13	C720C13CR	25.07	C	7.00	5.00	3.50	130.0
15	C720C15CR	28.86	C	7.00	5.00	3.50	155.0
16	C720C16CR	30.75	C	7.00	5.00	3.50	180.0
19	C720C19CR	36.44	C	7.50	5.00	3.75	220.0
20	C720C20CR	38.36	C	7.50	5.00	3.75	242.0
21	C720C21CR	40.25	C	7.50	5.00	3.75	261.0
23	C720C23CR	44.06	C	7.50	5.00	3.75	318.0
25	C720C25CR	47.87	C	7.50	5.00	3.75	342.0

* Regular and DoubleLife (Hunting Tooth) Designs

NOTE: Weights and Dimensions are approximate.

Please consult *Martin* for max hub information.

All Cast Sprockets available as Split Sprockets.

CHAINSAVER rims available on request.

HEAT TREAT available upon request.

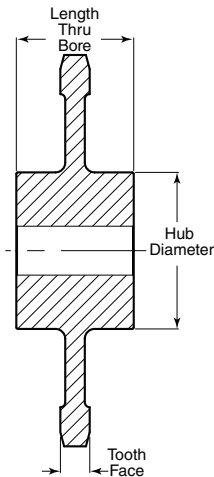
A730 CAST TOOTH SPROCKETS — PITCH 6.000 CHILLED RIM

FOR CHAINS NO.: A730, 730

Tooth Face at Pitch Line: 1.125 — Roller Diameter: 1.500

Number of Teeth	Catalog Number	Pitch Diameter	Style	Hub Diameter	Length Thru Bore	Max Bore	Weight (Lbs.) Approx.
6	C730C6CR	12.00	C	6.00	4.00	3.00	47.9
8	C730C8CR	15.68	C	6.00	4.00	3.00	71.3
9	C730C9CR	17.54	C	6.00	4.00	3.00	85.5
9.5P-19T	C730C19HCR*	18.48	C	6.00	4.00	3.00	107.3
10P-20T	C730C20HCR*	19.42	C	6.00	4.00	3.00	115.4
11	C730C11CR	21.30	C	6.00	4.00	3.00	105.0
11.5P-23T	C730C23HCR*	22.24	C	6.00	4.00	3.00	104.5
12	C730C12CR	23.14	C	7.00	5.00	3.50	110.8
12.5P-25T	C730C25HCR*	24.12	C	7.00	5.00	3.50	117.9
13	C730C13CR	25.07	C	7.00	5.00	3.50	125.1
13.5P-27T	C730C27HCR*	26.02	C	7.00	5.00	3.50	132.5
14	C730C14CR	26.96	C	7.00	5.00	3.50	153.7
15	C730C15CR	28.86	C	7.00	5.00	3.50	170.0
16	C730C16CR	30.75	C	7.00	5.00	3.50	187.2
18	C730C18CR	34.55	C	8.00	5.00	4.00	225.2
24	C730C24CR	45.79	C	8.00	5.00	4.00	363.5
27	C730C27CR	57.68	C	8.00	5.00	4.00	408.1

* Regular and DoubleLife (Hunting Tooth) Designs



823 CAST TOOTH SPROCKETS — PITCH 6.000 CHILLED RIM

FOR CHAINS NO.: 823

Tooth Face at Pitch Line: 1.130 — Roller Diameter: 0.780

Number of Teeth	Catalog Number	Pitch Diameter	Style	Hub Diameter	Length Thru Bore	Max Bore	Weight (Lbs.) Approx.
8	C823C8CR	10.45	C	6.00	4.00	2.44	25.0
10	C823C10CR	12.95	C	6.00	4.00	3.18	45.0
11	C823C11CR	14.40	C	6.00	4.00	3.68	54.0
12	C823C12CR	15.46	C	6.00	4.00	3.94	56.0
13	C823C13CR	16.71	C	6.00	4.00	4.44	60.0
14	C823C14CR	17.98	C	7.00	4.00	4.94	65.0
16	C823C16CR	20.51	C	7.00	4.00	5.44	81.0
17	C823C17CR	21.77	C	7.50	4.00	5.94	86.0
18	C823C18CR	23.04	C	7.50	4.00	5.94	91.0
19	C823C19CR	24.26	C	8.00	4.00	6.00	95.0
24	C823C24CR	30.65	C	8.00	4.00	6.00	138.0

830 CAST TOOTH SPROCKETS — PITCH 6.000 CHILLED RIM

FOR CHAINS NO.: 830, 6830, SR830, 830R, HSB830, RR830

Tooth Face at Pitch Line: 1.312 — Roller Diameter: 1.156

Number of Teeth	Catalog Number	Pitch Diameter	Style	Hub Diameter	Length Thru Bore	Max Bore	Weight (Lbs.) Approx.
6	C830C6CR	12.00	C	6.00	4.00	4.00	58.5
8	C830C8CR	15.65	C	7	4.00	5.00	83.0
9	C830C9CR	17.54	C	7	4.00	5.00	95.0
10	C830C10CR	19.42	C	7.00	4.00	5.00	102.0
11	C830C11CR	21.20	C	7.00	4.00	5.00	105.0
11.5 -23T	C830C23HCR*	22.21	C	7.50	5.00	5.50	125.0
12	C830C12CR	23.18	C	7.50	5.00	5.50	121.0
13	C830C13CR	25.07	C	8.50	5.00	6.00	142.0
15	C830C15CR	28.86	C	8.50	5.00	6.00	168.0
16	C830C16CR	30.75	C	8.50	5.00	6.00	180.0

* Hunting Tooth

825 CAST TOOTH SPROCKETS — PITCH 4.000 CHILLED RIM

FOR CHAINS NO.: 825, SR825

Tooth Face at Pitch Line: 1.250 — Roller Diameter: 1.156

Number of Teeth	Catalog Number	Pitch Diameter	Style	Hub Diameter	Length Thru Bore	Max Bore	Weight (Lbs.) Approx.
10	C825C10CR	12.94	C	6.00	4.00	3.00	58.0
11	C825C11CR	14.20	C	6.00	4.00	3.00	65.0
12	C825C12CR	15.45	C	6.00	4.00	3.00	78.0
13	C825C13CR	16.71	C	6.00	4.00	3.00	82.0
14	C825C14CR	17.98	C	8.00	4.00	3.00	94.0
15	C825C15CR	19.24	C	8.00	4.00	4.00	112.0
16	C825C16CR	20.50	C	8.00	4.00	4.00	115.0
19	C825C19CR	24.30	C	8.00	4.00	4.00	140.0

NOTE: Weights and Dimensions are approximate.

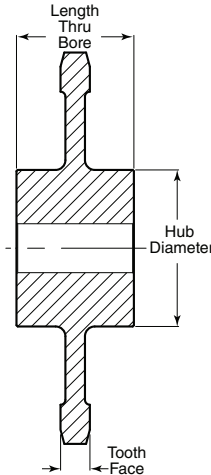
Please consult *Martin* for max hub information.

All Cast Sprockets available as Split Sprockets.

CHAINSAVER rims available on request.

HEAT TREAT available upon request.

Cast Iron Sprockets



844 CAST TOOTH SPROCKETS — PITCH 6.000 CHILLED RIM

FOR CHAINS NO.: 844, SBS844, SR844, 6844, 6844M, 844R, HSB844, HSB844S, S844, SBS844

Tooth Face at Pitch Line: 2.125 — Roller Diameter: 1.190

Number of Teeth	Catalog Number	Pitch Diameter	Style	Hub Diameter	Length Thru Bore	Max Bore	Weight (Lbs.) Approx.
8	C844C8CR	15.88	C	7.00	5.00	5.00	94.0
9	C844C9CR	17.54	C	7.00	5.00	5.00	112.0
10	C844C10CR	19.42	C	7.00	5.00	5.00	125.0
11	C844C11CR	21.30	C	7.00	5.00	5.00	140.0
12	C844C12CR	23.18	C	8.00	6.00	6.00	160.0
13	C844C13CR	25.07	C	8.00	6.00	6.00	171.0
15	C844C15CR	28.86	C	8.00	6.00	6.00	200.0
16	C844C16CR	30.75	C	8.00	6.00	6.00	217.0
19	C844C19CR	36.45	C	8.00	6.00	6.00	275.0

856 CAST TOOTH SPROCKETS — PITCH 6.000

FOR CHAINS NO.: 856, SS856, 6856, ER956, ER856, ER851, SBX857, SBX2857, 6856M, HSB856A, RS856, SBS856

Tooth Face at Pitch Line: 2.750 — Roller Diameter: 1.750

Number of Teeth	Catalog Number	Pitch Diameter	Style	Hub Diameter	Length Thru Bore	Max Bore	Weight (Lbs.) Approx.
7	C856C7	13.83	C	6.50	5.00	4.75	122.0
8	C856C8	15.68	C	6.50	5.00	4.75	130.0
10	C856C10	19.42	C	7.00	5.00	4.75	200.0
11	C856C11	21.30	C	7.00	5.00	4.75	230.0
12	C856C12	23.18	C	7.00	5.50	5.00	245.0
13	C856C13	25.07	C	7.50	5.50	5.00	260.0
14	C856C14	26.96	C	7.50	5.50	5.00	285.0
15	C856C15	28.86	C	7.50	5.50	5.00	300.0

E922 CAST TOOTH SPROCKETS — PITCH 9.000 CHILLED RIM

FOR CHAINS NO.: ER922, SS927, MRS927, 1751

Tooth Face at Pitch Line: 1.625 — Roller Diameter: 3.500

Number of Teeth	Catalog Number	Pitch Diameter	Style	Hub Diameter	Length Thru Bore	Max Bore	Weight (Lbs.) Approx.
6	CE922C6CR	18.00	C	8.00	6.00	5.94	112.0
8	CE922C8CR	23.52	C	8.00	6.00	5.94	170.0

F922 CAST TOOTH SPROCKETS — PITCH 9.000 CHILLED RIM

FOR CHAINS NO.: FR922, SS922, 925R

Tooth Face at Pitch Line: 1.125 — Roller Diameter: 3.500

Number of Teeth	Catalog Number	Pitch Diameter	Style	Hub Diameter	Length Thru Bore	Max Bore	Weight (Lbs.) Approx.
6	CF922C6CR	18.00	C	8.00	6.00	5.94	74.0
8	CF922C6CR	23.52	C	8.00	6.00	5.94	150.0
9	CF922C6CR	26.31	C	8.00	6.00	5.94	160.0
10	CF922C6CR	29.12	C	8.00	6.00	5.94	175.0

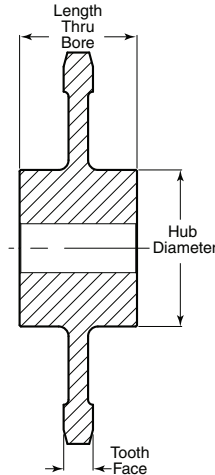
NOTE: Weights and Dimensions are approximate.

Please consult *Martin* for max hub information.

All Cast Sprockets available as Split Sprockets.

CHAINSAVER rims available on request.

HEAT TREAT available upon request.



F933 CAST TOOTH SPROCKETS — PITCH 9.000

CHILLED RIM

FOR CHAINS NO.: F932, F929, SS932, 933, F933, F940, F932, SS932, 933, F933, SS933, FB40, SS940, F929 ER933, FR933, SS933 B964R, F-933, 933, E933, RS933F, RS933P, SS933

Tooth Face at Pitch Line: 1.250 — Roller Diameter: 4.000

Number of Teeth	Catalog Number	Pitch Diameter	Style	Hub Diameter	Length Thru Bore	Max Bore	Weight (Lbs.) Approx.
6	CF933C6CR	18.00		8.00	8	5.94	93.0
7	CF933C7CR	20.74		8.00	8	5.94	120.0
8	CF933C8CR	23.52		8.00	8.00	5.94	152.0

B963R CAST TOOTH SPROCKETS — PITCH 9.000

CHILLED RIM

FOR CHAINS NO.: SS922, FR922, SS4002, SS4002, SS922, F930, SS930, 809, B963R, F922, SS922, F930, SS930, E931, B963R, F922, E931

Tooth Face at Pitch Line: 1.125 — Roller Diameter: 3.500

Number of Teeth	Catalog Number	Pitch Diameter	Style	Hub Diameter	Length Thru Bore	Max Bore	Weight (Lbs.) Approx.
6	CB963C6CR	18.00	C	6.00	6.00	2.93	74.0
8	CB963C8CR	23.52	C	8.00	6.00	3.44	150.0
9	CB963C9CR	26.31	C	8.00	6.00	3.44	160.0
10	CB963C10CR	29.12	C	8.00	6.00	3.44	175.0
11	CB963C11CR	31.95	C	8.00	6.00	4.00	181.0
12	CB963C12CR	34.77	C	8.00	6.00	4.00	195.0

951 CAST TOOTH SPROCKETS — PITCH 6.000

CHILLED RIM

FOR CHAINS NO.: 2183, F2183, S951, S951, 1131R, S1131, SS1131, U1131, 1734, 1906, 2183, 2184, 2184AC, 2184R, SS2184, LXS6438, 626R, 156CMR, MR156C, 631R, SS951, SS314, 6 Spec., 126C, 126CMR, MR126C, 626R, 156CMR, MR156C, 631R, S951, SS951, SS314

Tooth Face at Pitch Line: 1.062 — Roller Diameter: 3.00

Number of Teeth	Catalog Number	Pitch Diameter	Style	Hub Diameter	Length Thru Bore	Max Bore	Weight (Lbs.) Approx.
6	C951C6CR	12.00	C	6.00	6.00	3.94	62.0
8	C951C8CR	15.68	C	6.00	6.00	3.94	78.0
9	C951C9CR	17.54	C	6.00	6.00	3.94	92.0
12	C951C12CR	23.18	C	8.00	6.00	4.44	153.0
13	C951C13CR	25.03	C	8.00	6.00	4.44	175.0
14	C951C14CR	26.96	C	8.00	6.00	4.44	190.0
16	C951C16CR	30.75	C	8.00	6.00	4.44	225.0
25	C951C25CR	47.87	C	8.00	6.00	4.44	350.0

D963R CAST TOOTH SPROCKETS — PITCH 9.000

CHILLED RIM

FOR CHAINS NO.: D-963R

Tooth Face at Pitch Line: 1.750 — Roller Diameter: 3.500

Number of Teeth	Catalog Number	Pitch Diameter	Style	Hub Diameter	Length Thru Bore	Max Bore	Weight (Lbs.) Approx.
8	CD963C8CR	23.52	C	10.00	8.00	6.44	170.0
9	CD963C9CR	26.31	C	10.00	8.00	6.44	182.0
10	CD963C10CR	29.12	C	10.00	8.00	6.44	198.0
11	CD963C11CR	31.95	C	10.00	8.00	6.44	215.0
12	CD963C12CR	34.77	C	10.00	8.00	6.44	230.0

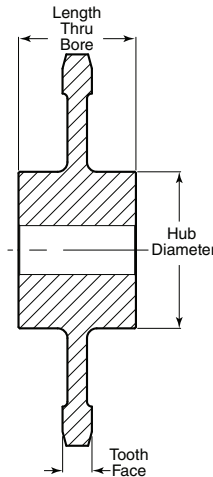
NOTE: Weights and Dimensions are approximate.

Please consult *Martin* for max hub information.

All Cast Sprockets available as Split Sprockets.

CHAINSAVER rims available on request.

HEAT TREAT available upon request.



E963R CAST TOOTH SPROCKETS — PITCH 9.000 CHILLED RIM

FOR CHAINS NO.: E-963R

Tooth Face at Pitch Line: 1.250 — Roller Diameter: 4.000

Number of Teeth	Catalog Number	Pitch Diameter	Style	Hub Diameter	Length Thru Bore	Max Bore	Weight (Lbs.) Approx.
8	CE963C8	23.52	C	10.00	8.00	6.44	152.0
9	CE963C9	26.31	C	10.00	8.00	6.44	164.0
10	CE963C10	29.12	C	10.00	8.00	6.44	179.0
11	CE963C11	31.95	C	10.00	8.00	6.44	194.0
12	CE963C12	34.77	C	10.00	8.00	6.44	224.0

F963R CAST TOOTH SPROCKETS — PITCH 9.000 CHILLED RIM

FOR CHAINS NO.: F-963R (Hitachi)

Tooth Face at Pitch Line: 1.250 — Roller Diameter: 4.000

Number of Teeth	Catalog Number	Pitch Diameter	Style	Hub Diameter	Length Thru Bore	Max Bore	Weight (Lbs.) Approx.
6	CF963C8	18.00	C	8.00	6.00	6.00	80.0
8	CF963C9	23.52	C	8.00	6.00	6.00	80.0

998 CAST TOOTH SPROCKETS — PITCH 9.031 CHILLED RIM

FOR CHAINS NO.: 998, S998, SS5998

Tooth Face at Pitch Line: 1.375 — Roller Diameter: 2.690

Number of Teeth	Catalog Number	Pitch Diameter	Style	Hub Diameter	Length Thru Bore	Max Bore	Weight (Lbs.) Approx.
4	C197C6CR	23.53	C	9.00	6.00	6.44	195.0
5	C197C7CR	29.14	C	9.00	6.00	6.44	258.0
6	C197C8CR	34.81	C	9.00	6.00	6.44	325.0

1030 CAST TOOTH SPROCKETS — PITCH 3.075 CHILLED RIM

FOR CHAINS NO.: ROA40 HYPER, ROA1031, ROA1032, R1033, R1035, R1037, SJLR1037, 1359, RS1539, CHAMP3, MXS-40, MXS-1031, MSR-1539, MXS-3075, SS554, SS40, 1030, R1033, R1035, 1037, CHAMP 3, JS-1030, US-1030

Tooth Face at Pitch Line: 1.250 — Roller Diameter: 1.250

Number of Teeth	Catalog Number	Pitch Diameter	Style	Hub Diameter	Length Thru Bore	Max Bore	Weight (Lbs.) Approx.
6	C1030C6CR	6.15	C	3.00	3.00	2.44	21.0
8	C1030C8CR	8.04	C	4.00	4.00	2.44	24.0
9	C1030C9CR	8.99	C	4.00	4.00	2.44	44.0
10	C1030C10CR	9.95	C	5.00	4.00	3.44	43.0
11	C1030C11CR	10.92	C	5.00	4.00	3.44	51.0
12	C1030C12CR	11.88	C	5.00	4.00	3.44	50.0
13	C1030C13CR	12.85	C	5.00	4.00	3.44	64.0
14	C1030C14CR	13.82	C	5.00	4.00	3.44	73.0
15	C1030C15CR	14.79	C	6.00	4.00	3.94	76.0
16	C1030C16CR	15.76	C	6.00	4.00	3.94	82.0
17	C1030C17CR	16.73	C	6.00	4.00	3.94	100.0
18	C1030C18CR	17.71	C	6.00	4.00	3.94	105.0
19	C1030C19CR	18.68	C	6.00	4.00	3.94	112.0
20	C1030C20CR	19.66	C	6.00	4.00	3.94	100.0
21	C1030C21CR	20.63	C	7.50	5.00	4.88	105.0
22	C1030C22CR	21.61	C	7.50	5.00	4.88	130.0
23	C1030C23CR	22.57	C	7.50	5.00	4.88	132.0
24	C1030C24CR	23.56	C	7.50	5.00	4.88	145.0
26	C1030C26CR	25.51	C	7.50	5.00	4.88	148.0
27	C1030C27CR	26.49	C	7.50	5.00	4.88	165.0
28	C1030C28CR	27.46	C	7.50	5.00	4.88	171.0
30	C1030C30CR	29.42	C	8.00	5.00	4.94	180.0
31	C1030C31CR	30.39	C	8.00	5.00	4.94	189.0
32	C1030C32CR	31.37	C	8.00	5.00	4.94	193.0
33	C1030C33CR	32.35	C	8.00	5.00	4.94	215.0
34	C1030C34CR	33.33	C	8.00	5.00	4.94	33.33
35	C1030C35CR	34.31	C	9.50	6.50	5.88	220.0
36	C1030C36CR	35.28	C	9.50	6.50	5.88	229.0
37	C1030C37CR	36.26	C	9.50	6.50	5.88	234.0
38	C1030C38CR	37.24	C	9.50	6.50	5.88	252.0
39	C1030C39CR	38.25	C	9.50	6.50	5.88	250.0
40	C1030C40CR	39.19	C	9.50	6.50	5.88	261.0
42	C1030C42CR	41.15	C	9.50	6.50	5.88	300.0
44	C1030C44CR	43.10	C	9.50	6.50	5.88	321.0
46	C1030C46CR	45.06	C	9.50	6.50	5.88	330.0
48	C1030C48CR	47.02	C	10.00	6.50	6.88	782.0
55	C1030C55CR	53.86	C	10.00	6.50	5.88	600.0

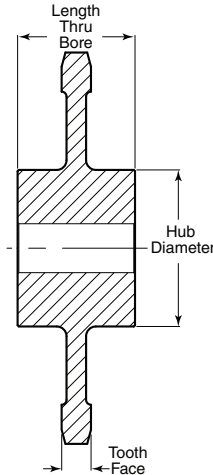
NOTE: Weights and Dimensions are approximate.

Please consult *Martin* for max hub information.

All Cast Sprockets available as Split Sprockets.

CHAINSAVER rims available on request.

HEAT TREAT available upon request.



1113 CAST TOOTH SPROCKETS — PITCH 4.040 CHILLED RIM

FOR CHAINS NO.: A3420, B3420, 3420, RS1113, RO2113, SS1113, SR3113, 3-1/2, SS60,

Tooth Face at Pitch Line: 1.125 — Roller Diameter: 2.00

Number of Teeth	Catalog Number	Pitch Diameter	Style	Hub Diameter	Length Thru Bore	Max Bore	Weight (Lbs.) Approx.
6	C1113C6CR	8.08	C	4.00	3.00	2.44	24.0
8	C1113C8CR	10.56	C	4.00	4.00	2.94	38.0
9	C1113C9CR	11.81	C	5.00	4.00	3.18	40.0
10	C1113C10CR	13.07	C	5.00	4.00	3.68	45.0
11	C1113C11CR	14.34	C	5.00	5.00	3.94	50.0
12*	C1113C12CR	15.61	C	6.00	5.00	4.44	60.0
13*	C1113C13CR	16.88	C	6.00	5.00	4.94	68.0
14**	C1113C14CR	18.16	C	6.00	5.00	4.94	85.0
16*	C1113C16CR	20.71	C	6.00	5.00	4.94	95.0
17	C1113C17CR	21.99	C	6.00	5.00	4.94	104.0
18	C1113C18CR	23.67	C	8.00	6.00	4.94	110.0
24	C1113C24CR	30.95	C	8.00	6.00	4.94	178.0

1131 CAST TOOTH SPROCKETS — PITCH 6.000 CHILLED RIM

FOR CHAINS NO.: 6SP, RS1131, 2183, A2184

Tooth Face at Pitch Line: 1.250 — Roller Diameter: 3.00

Number of Teeth	Catalog Number	Pitch Diameter	Style	Hub Diameter	Hub Length	Max Bore	Weight (Lbs.) Approx.
6	C1131C6CR	12.00	C	6.00	5.00	3.94	62.0
8	C1131C8CR	15.68	C	6.00	5.00	3.94	78.0
9	C1131C9CR	17.54	C	6.00	5.00	3.95	120.0
12	C1131C12CR	23.18	C	7.00	6.00	4.44	153.0
13	C1131C13CR	25.03	C	7.00	6.00	4.94	175.0
14	C1131C14CR	26.96	C	8.00	6.00	5.00	190.0
16	C1131C16CR	30.75	C	8.00	6.00	5.00	225.0
25	C1131C24CR	47.87	C	8.00	6.00	5.00	350.0

1120 CAST TOOTH SPROCKETS — PITCH 4.000 CHILLED RIM

FOR CHAINS NO.: 4, RR1120 (tbl 13-14 R95), 2761, 4, SS4, 40SP, LXS 4019, 1120 (tbl 13-47) RS4029

Tooth Face at Pitch Line: 0.750 — Roller Diameter: 1.500

Number of Teeth	Catalog Number	Pitch Diameter	Style	Hub Diameter	Hub Length	Max Bore	Weight (Lbs.) Approx.
5	C1120C5CR	6.81	C	3.50	3.00	2.18	12.0
6	C1120C6CR	8.00	C	4.00	3.00	2.44	23.0
7	C1120C7CR	9.22	C	4.50	3.00	3.68	72.0
8	C1120C8CR	10.45	C	4.50	3.00	3.68	29.0
9	C1120C9CR	11.70	C	5.00	3.00	3.94	38.0
10	C1120C10CR	12.94	C	5.00	4.00	3.94	40.0
11	C1120C11CR	14.19	C	6.00	4.00	4.25	50.0
12	C1120C12CR	15.45	C	6.00	4.00	4.25	65.0
14	C1120C14CR	17.98	C	6.00	4.00	4.25	77.0
15	C1120C15CR	19.24	C	6.00	4.00	4.25	86.0
16	C1120C16CR	20.50	C	8.00	5.00	6.00	97.0
18	C1120C18CR	23.04	C	8.00	5.00	6.00	115.0
19	C1120C19CR	24.30	C	8.00	5.00	6.00	125.0
22	C1120C22CR	28.11	C	8.00	5.00	6.00	165.0
24	C1120C24CR	30.65	C	8.00	5.00	6.00	190.0
31	C1120C31CR	39.54	C	9.50	6.00	7.00	244.0
35	C1120C35CR	44.62	C	9.50	6.00	7.00	322.0

F1222 CAST TOOTH SPROCKETS — PITCH 12.000 CHILLED RIM

FOR CHAINS NO.: FR1222, SS1222, A1263, B1263R

Tooth Face at Pitch Line: 1.000 — Roller Diameter: 4.500

Number of Teeth	Catalog Number	Pitch Diameter	Style	Hub Diameter	Length Thru Bore	Max Bore	Weight (Lbs.) Approx.
6	CF1222C6CR	24.00	C	7.50	5.00	5.94	143.0
8	CF1222C8CR	31.36	C	8.00	5.00	5.94	210.0

NOTE: Weights and Dimensions are approximate.

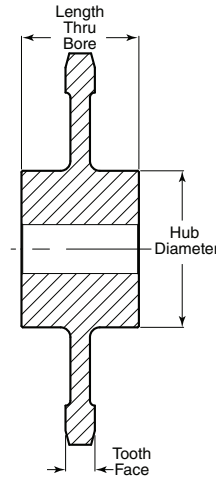
Please consult *Martin* for max hub information.

All Cast Sprockets available as Split Sprockets.

CHAINSAVER rims available on request.

HEAT TREAT available upon request.

Cast Iron Sprockets



2180 CAST TOOTH SPROCKETS — PITCH 6.000 CHILLED RIM

FOR CHAINS NO.: A1670, B1670, 1670, 2180, 530, 628R, 1126, 1212, 2180

Tooth Face at Pitch Line: 1.125 — Roller Diameter: 2.250

Number of Teeth	Catalog Number	Pitch Diameter	Style	Hub Diameter	Length Thru Bore	Max Bore	Weight (Lbs.) Approx.
6	C2180C6CR	12.00	C	6.00	5.00	4.00	50.0
8	C2180C8CR	15.68	C	6.00	5.00	4.00	64.0
16	C2180C16CR	30.76	C	8.00	6.00	6.00	200.0
20	C2180C20CR	38.36	C	10.00	6.00	8.00	260.0

9250 CAST TOOTH SPROCKETS — PITCH 2.500 CHILLED RIM

FOR CHAINS NO.: SM120

Tooth Face at Pitch Line: 0.750 — Roller Diameter: 1.130

Number of Teeth	Catalog Number	Pitch Diameter	Style	Hub Diameter	Length Thru Bore	Max Bore	Weight (Lbs.) Approx.
6	C9250C6CR	5.00	C	3.00	2.75	1.50	5.0
7	C9250C6CR	5.76	C	3.00	2.75	1.50	9.0
8	C9250C6CR	6.53	C	4.00	2.75	2.00	10.0
10	C9250C6CR	8.09	C	4.00	3.00	2.50	13.0
11	C9250C6CR	8.87	C	4.00	3.00	2.50	16.0
12	C9250C6CR	9.66	C	4.00	3.00	2.50	18.0
14	C9250C6CR	11.24	C	6.00	3.00	3.00	23.0
15	C9250C6CR	12.03	C	6.00	3.00	3.00	28.0
16	C9250C6CR	12.81	C	6.00	3.00	3.00	30.0

NOTE: Weights and Dimensions are approximate.

Please consult *Martin* for max hub information.

All Cast Sprockets available as Split Sprockets.

CHAINSAVER rims available on request.

HEAT TREAT available upon request.

1240 CAST TOOTH SPROCKETS — PITCH 4.063 CHILLED RIM

FOR CHAINS NO.: 1240, ROA1242 1244, R1248, ROA124, SS124, IS-4110, IS-4106, LXS1242, 1241

Tooth Face at Pitch Line: 1.750 — Roller Diameter: 1.750

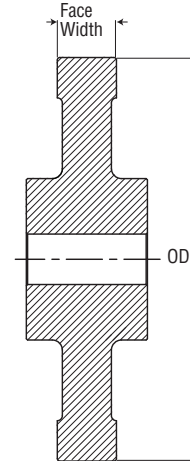
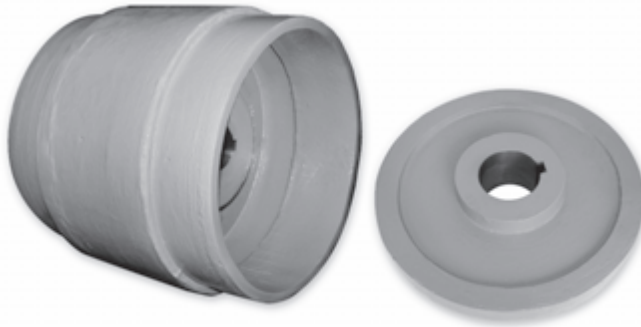
Number of Teeth	Catalog Number	Pitch Diameter	Style	Hub Diameter	Length Thru Bore	Max Bore	Weight (Lbs.) Approx.
6	C1240C6CR	8.13	C	4.00	4.00	2.31	30.0
7	C1240C7CR	13.83	C	5.25	4.75	3.25	39.0
8	C1240C8CR	10.82	C	6.50	5.00	4.06	52.0
9	C1240C9CR	11.88	C	6.50	5.00	4.06	61.0
10	C1240C10CR	13.15	C	6.50	5.00	4.06	69.0
11	C1240C11CR	14.42	C	6.50	5.00	4.06	78.0
12	C1240C12CR	15.70	C	7.00	6.00	4.56	96.0
13	C1240C13CR	16.98	C	7.00	6.00	4.56	102.0
14	C1240C14CR	18.26	C	7.00	6.00	4.56	112.0
15	C1240C15CR	19.54	C	7.00	6.00	4.56	122.0
16	C1240C16CR	20.82	C	8.00	6.25	5.31	140.0
17	C1240C17CR	22.11	C	8.00	6.25	5.31	142.0
18	C1240C18CR	23.40	C	8.00	6.25	5.31	161.0
19	C1240C19CR	24.68	C	8.00	6.25	5.31	175.0
21	C1240C21CR	27.26	C	8.00	6.25	5.31	210.0
22	C1240C22CR	28.55	C	8.00	6.25	5.31	218.0
24	C1240C24CR	31.12	C	8.00	6.25	5.31	240.0
25	C1240C25CR	33.42	C	9.00	6.25	6.06	250.0
28	C1240C28CR	36.29	C	9.00	6.25	6.06	310.0
29	C1240C29CR	37.58	C	9.00	6.75	6.06	330.0
30	C1240C30CR	38.87	C	10.00	6.75	7.13	346.0
32	C1240C32CR	41.45	C	10.00	6.75	7.13	378.0
34	C1240C34CR	44.03	C	10.00	6.75	7.13	402.0
37	C1240C37CR	47.90	C	11.00	7.75	7.13	471.0

4850 CAST TOOTH SPROCKETS — PITCH 12.000 CHILLED RIM

FOR CHAINS NO.: RS4850, SS1265R

Tooth Face at Pitch Line: 2.000 — Roller Diameter: 3.000

Number of Teeth	Catalog Number	Pitch Diameter	Style	Hub Diameter	Length Thru Bore	Max Bore	Weight (Lbs.) Approx.
8	C4850C8CR	31.43	C	10.00	6.00	6.00	220.0



Martin traction wheels are offered as either solid construction or as a solid hub with segmental teeth. Segmental traction wheels can greatly reduce downtime since you do not have to disassemble the components around it. Traction wheels are in bucket elevators and can withstand abrasive materials.

Cast Traction Wheels and Drum Flanged Traction Wheels

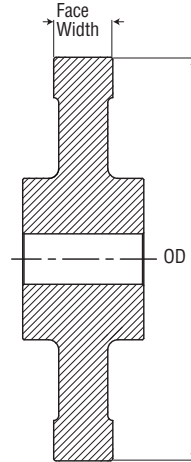
Chain: 78, 88			F=0.94
Part Number	Outside Diameter	Face Width	Weight Ea. Lbs.
C10.0TW	10.00	0.94	30.0
C12.0TW	12.00	0.94	45.0
C12.5TW	12.50	0.94	50.0
C13.25TW	13.25	0.94	58.0
C14.0TW	14.00	0.94	62.0
C15.0TW	15.00	0.94	65.0
C15.5TW	15.50	0.94	68.0
C16.0TW	16.00	0.94	70.0
C18.0TW	18.00	0.94	75.0
C19.0TW	19.00	0.94	80.0
C20.0TW	20.00	0.94	85.0

Chain: H102			F=6.25
Part Number	Outside Diameter	Face Width	Weight Ea. Lbs.
C8.5TW	8.50	6.25	76.0
C10.0TW	10.00	6.25	126.0
C11.5TW	11.50	6.25	185.0
C13.0TW	13.00	6.25	144.0
C14.63TW	14.63	6.25	230.0
C16.25TW	16.25	6.25	162.0
C17.75TW	17.75	6.25	190.0
C19.38TW	19.38	6.25	215.0

Chain: C102B, C110, C102-1/2			F=1.88
Part Number	Outside Diameter	Face Width	Weight Ea. Lbs.
C12.0TW	12.00	1.88	50.0
C13.5TW	13.50	1.88	60.0
C14.0TW	14.00	1.88	63.0
C16.63TW	14.63	1.88	68.0
C15.75TW	15.75	1.88	78.0
C16.75TW	16.75	1.88	89.0
C17.0TW	17.00	1.88	92.0
C18.0TW	18.00	1.88	100.0
C19.75TW	19.75	1.88	108.0
C21.0TW	21.00	1.88	117.0
C22.0TW	22.00	1.88	127.0
C22.75TW	22.75	1.88	135.0
C23.0TW	23.00	1.88	139.0
C23.75TW	23.75	1.88	143.0
C27.63TW	27.63	1.88	160.0
C29.63TW	29.63	1.88	166.0
C33.0TW	33.00	1.88	175.0

Chain: H82, C131, 823, 4103, S131, 103, 730			F=1.13
Part Number	Outside Diameter	Face Width	Weight Ea. Lbs.
C7.0TW	7.00	1.13	25.0
C9.63TW	9.63	1.13	38.0
C14.63TW	14.63	1.13	49.0
C16.0TW	16.00	1.13	60.0
C17.0TW	17.00	1.13	70.0
C18.0TW	18.00	1.13	75.0
C20.0TW	20.00	1.13	90.0
C22.0TW	22.00	1.13	115.0
C22.5TW	22.50	1.13	125.0
C24.0TW	24.00	1.13	135.0
C29.38TW	29.38	1.13	170.0

Traction Wheels



Chain: H104				F=4.00
Part Number	Outside Diameter	Face Width	Drum Width	Weight Ea. Lbs.
C10.5TW	10.50	4.00	12.00	125.0
C12.38TW	12.38	4.00	12.00	145.0
C14.0TW	14.00	4.00	12.00	170.0
C16.0TW	16.00	4.00	12.00	205.0
C17.75TW	17.75	4.00	12.00	250.0
C19.75TW	19.75	4.00	12.00	305.0
C20.0TW	20.03	4.00	12.00	345.0

Chain: H116				F=13.00
Part Number	Outside Diameter	Face Width	Drum Width	Weight Ea. Lbs.
C16.88TW	16.88	13.0	20.5	395.0
C19.0TW	19.00	13.0	20.5	485.0
C21.75TW	21.75	13.0	20.5	550.0

Chain: H118			F=13.00
Part Number	Outside Diameter	Face Width	Weight Ea. Lbs.
C13.88TW	13.88	13.00	495.0
C16.5TW	16.50	13.00	560.0

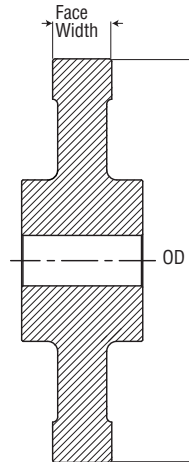
Chain: H110				F=8.88
Part Number	Outside Diameter	Face Width	Drum Width	Weight Ea. Lbs.
C10.25TW	10.25	8.88	16.38	175.0
C14.0TW	14.00	8.88	16.38	250.0
C15.0TW	15.88	8.88	16.38	290.0
C17.75TW	17.75	8.88	16.38	335.0
C19.63TW	19.63	8.88	16.38	365.0

Chain: C132				F=2.75
Part Number	Outside Diameter	Face Width	Drum Width	Weight Ea. Lbs.
C13.0TW	13.00	2.75		120.0
C13.75TW	13.75	2.75		124.0
C16.0TW	16.00	2.75		128.0
C16.25TW	16.25	2.75	14.00	510.0
C17.0TW	17.00	2.75		138.0
C18.0TW	18.00	2.75		147.0
C18.25TW	18.25	2.75	14.00	570.0
C20.25TW	20.25	2.75	14.00	620.0
C21.63TW	21.63	2.75		186.0
C22.0TW	22.00	2.75		190.0
C24.0TW	24.00	2.75		205.0
C26.19TW	26.19	2.75		210.0
C27.75TW	27.75	2.75		225.0
C30.0TW	30.00	2.75		280.0

Chain: C111				F=2.25
Part Number	Outside Diameter	Face Width	Weight Ea. Lbs.	
C9.5TW	9.50	2.25	50.0	
C14.5TW	14.56	2.25	85.0	
C15.5TW	15.50	2.25	91.0	
C18.0TW	18.00	2.25	105.0	
C20.0TW	20.00	2.25	135.0	
C22.0TW	22.00	2.25	143.0	
C23.0TW	23.00	2.25	146.0	
C23.75TW	23.75	2.25	149.0	
C26.0TW	26.00	2.25	165.0	
C29.5TW	29.50	2.25	198.0	
C30.75TW	30.75	2.25	210.0	

Unit Number H480				F=11.13
Part Number	Outside Diameter	Face Width	Drum Width	Weight Ea. Lbs.
C13.88TW	13.88	11.13	22.00	440.0
C16.25TW	16.25	11.13	22.00	510.0
C18.75TW	18.75	11.13	22.00	540.0
C21.13TW	21.13	11.13	22.00	600.0
C23.75TW	23.75	11.13	22.00	630.0

Chain: H112				F=9.00
Part Number	Outside Diameter	Face Width	Drum Width	Weight Ea. Lbs.
C16.75TW	16.75	9.00	16.5	200.0
C19.25TW	19.25	9.00	16.5	230.0



Chain: SS40, 825, 830			F=1.25
Part Number	Outside Diameter	Face Width	Weight Ea. Lbs.
C10.5TW	10.50	1.25	45.0
C14.0TW	14.00	1.25	60.0
C15.5TW	15.50	1.25	68.0
C16.0TW	16.00	1.25	72.0
C17.0TW	17.00	1.25	79.0
C18.25TW	18.25	1.25	86.0
C20.0TW	20.00	1.25	95.0
C22.0TW	22.00	1.25	105.0
C24.0TW	24.00	1.25	120.0
C27.75TW	27.75	1.25	140.0
C31.0TW	31.00	1.25	160.0

Chain: S856			F=2.63
Part Number	Outside Diameter	Face Width	Weight Ea. Lbs.
C20.0TW	20.00	2.63	170.0
C21.5TW	21.50	2.63	187.0
C26.0TW	26.00	2.63	200.0
C27.75TW	27.75	2.63	218.0
C29.5TW	29.50	2.63	225.0
C30.0TW	30.00	2.63	236.0

Chain: 955			F=0.69
Part Number	Outside Diameter	Face Width	Weight Ea. Lbs.
C08.0TW	8.00	0.69	24.0
C18.75TW	18.75	0.69	65.0

Chain: 844, 844R			F=2.13
Part Number	Outside Diameter	Face Width	Weight Ea. Lbs.
C12.0TW	12.00	2.13	65.0
C16.0TW	16.00	2.13	90.0
C19.75TW	19.75	2.13	109.0
C22.25TW	22.25	2.13	130.0
C23.75TW	23.75	2.13	148.0
C27.75TW	27.75	2.13	172.0
C29.0TW	29.00	2.13	190.0

Chain: 720			F=1.00
Part Number	Outside Diameter	Face Width	Weight Ea. Lbs.
C15.0TW	15.00	1.00	62.0
C15.5TW	15.50	1.00	65.0
C18.25TW	18.25	1.00	85.0

Segmental Hubs



Segmental sprockets greatly reduce the labor costs as well as the downtime associated with replacing worn standard type sprockets. Worn segments can be replaced by simply disassembling the unit, eliminating the need to remove shaft and or bearing assemblies as well as the need to re-align the hub.

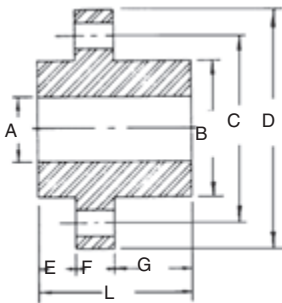
Solid Hub Bodies

Solid hub bodies are recommended for new installations. They

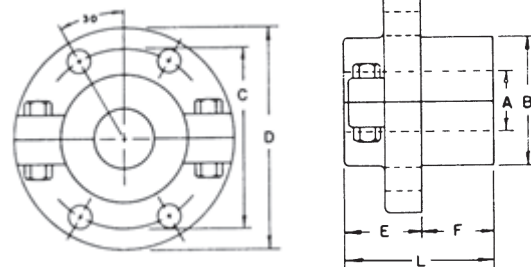
are available precisely machined of high quality cast iron or USA grade alloy steel.

Split Hub Bodies

Split hubs can be easily installed on existing installations without the need to remove the shaft, bearings or the chain. They are available precisely machined of high quality cast iron or USA grade alloy steel.



SOLID HUBS — STEEL



SPLIT HUBS — CAST IRON

Steel Solid Hub

Part Number	Outside Diameter	Bore Range		Length thru Bore Range	
		Minimum	Maximum	Minimum	Maximum
MUS10	12.00	1.94	4.94	4.250	6.00
MUS12	14.50	1.94	5.94	4.250	6.00
MUS16	18.50	1.94	8.44	3.250	8.00
MUS20	22.50	2.44	9.94	5.000	9.50
MUS25	27.50	1.94	8.44	5.500	11.00
MUS35	38.00	1.94	8.44	5.500	11.00

Cast Solid Hub

Part Number	Outside Diameter	Bore Range		Length thru Bore Range	
		Minimum	Maximum	Minimum	Maximum
MUS10C	12.00	1.94	4.44	4.250	6.00
MUS12C	14.50	1.94	4.94	4.250	6.00
MUS16C	18.50	1.94	6.94	3.250	8.00
MUS20C	22.50	2.44	6.94	5.000	9.50

Steel Split Hub

Part Number	Outside Diameter	Bore Range		Length thru Bore Range	
		Minimum	Maximum	Minimum	Maximum
MUS12S	14.50	1.94	4.94	6.750	7.75
MUS16S	18.50	1.94	5.94	6.750	7.75
MUS20S	22.50	1.94	8.94	6.750	8.75
MUS25S	27.50	1.94	7.94	6.750	8.75
MUS35S	38.00	1.94	8.94	6.750	8.75

Cast Split Hub

Part Number	Outside Diameter	Bore Range		Length thru Bore Range	
		Minimum	Maximum	Minimum	Maximum
MUS10SC	12.00	1.94	2.44	5.625	5.625
MUS12SC	14.50	1.94	3.94	5.625	7.00
MUS16SC	18.50	1.94	4.94	6.500	8.25
MUS20SC	22.50	2.44	7.44	4.375	11.12

★Maximum bores shown are maximum bores with standard keyseat and setscrew.

Segmental Rim Sprockets and Traction Wheels

Cast Rims

Each traction wheel rim and sprocket rim is induction hardened to the highest practical hardness around the entire circumference. The hardness depth is controlled to give the longest wear life, yet leaving the interior tough and ductile - perfect qualities for absorbing the impact and shock loads encountered in elevator-conveyor service.

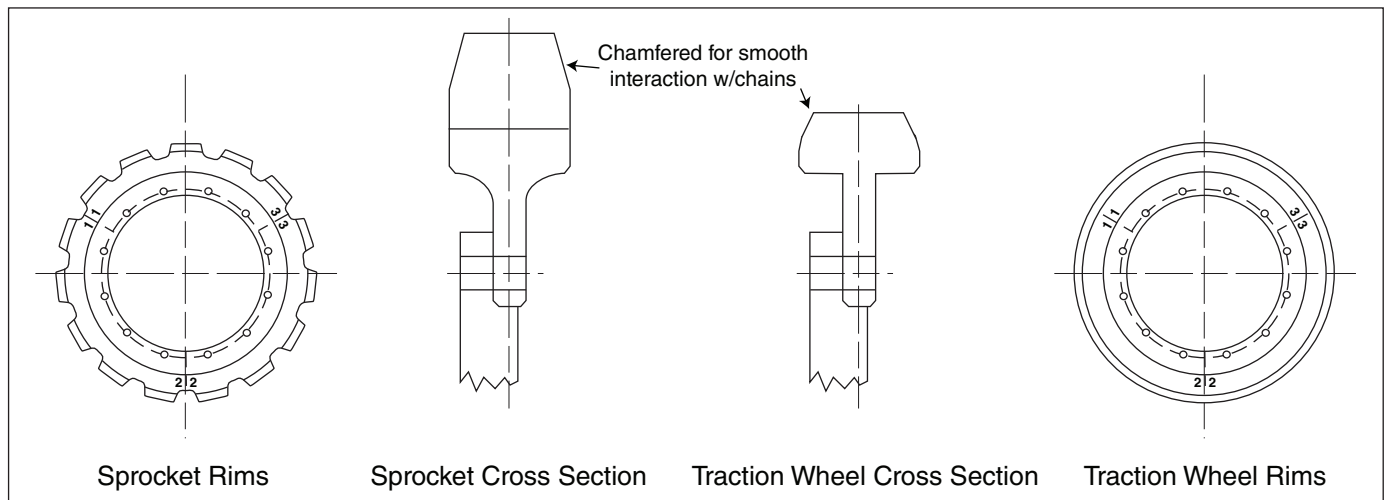
Segmental sprocket rims can be reversed (back side of tooth becomes the working face), in order to maximize wear. Segmental traction wheel rims can be easily installed, no need to even remove the chain in order to replace worn out rims. No burning or cutting is necessary.

The "T" head traction wheel design moves the center of the chain load more closely over the body flange, thus reducing the possibility of hub fatigue problems.

Segmental rim traction wheels are split with cuts in the rims that are made diagonally. These diagonal cuts eliminate the possibility of the segments spalling or chipping at the line of split as a result of chain bushing or barrel impact.

The sides of the segmental traction wheel and sprocket rims are chamfered to allow the chain to "enter" and "leave" smoothly without damaging the chain components.

All rims are furnished with high strength UNC thread nuts and bolts as standard.



Available Cast Traction Wheel Rims

Rex Chain No.	Link-Belt Chain No.	No. of Teeth	Use Body No.*	Pitch Dia.	Wt. Each Lbs.	Pitch Dia.
S110	SBS110	24	16	45.97	1.75	115
A102B	C102B					
S102B	SBS102B					
S102-1/2	C102-1/2					
S102-1/2	SBS102-1/2					
ES111 A111	SBX856 SBX2857	22	16	33.45	2.25	110
		24	16	34.47		130
		26	20	39.49		140
		30	20	45.54		165
RS856 ER857 ER956	SBX856 SBX2857	20	12	38.36	2.75	90
		22	16	42.16		115
		24	16	45.97		145
		26	20	49.78		155
		28	20	53.89		170
ER859 ER864	SBX2856 SBX2864	30	20	57.40	3.50	185
		24	16	45.97		165
		26	20	49.78		185
		30	20	57.40		215
		36	20	68.84		265
		42	35	80.29		300
49	35	93.65	375			

Keyways & Setscrews



Keyseating, Keys and Setscrews

All *Martin* bored-to-size Cast Iron Sprockets include a keyway and two setscrews. All parts are shipped less key stock. Keyway and setscrew sizes are supplied according to the table below, unless specified. Our standard setscrew locations are one over the keyway and one at 90 degrees.

STANDARD KEYWAYS AND SETSCREWS

BORE INCHES	KEYWAY WIDTH X DEPTH	DIAMETER OF SCREW	BORE INCHES	KEYWAY WIDTH X DEPTH	DIAMETER OF SCREW
1/2 to 9/16	1/8 × 1/16	#10	2-5/16 to 2-3/4	5/8 × 5/16	5/8
5/8 to 7/8	3/16 × 3/32	1/4	2-13/16 to 3-1/4	3/4 × 3/8	5/8
15/16 to 1-1/4	1/4 × 1/8	5/16	5-5/16 to 3-3/4	7/8 × 7/16	3/4
1-5/16 to 1-3/8	5/16 × 5/32	3/8	3-13/16 to 4-1/2	1 × 1/2	3/4
1-7/16 to 1-3/4	3/8 × 3/16	3/8	4-9/16 to 5-1/2	1-1/4 × 5/8	7/8
1-13/16 to 2-1/4	1/2 × 1/4	1/2	5-9/16 to 6-1/2	1-1/2 × 3/4	1