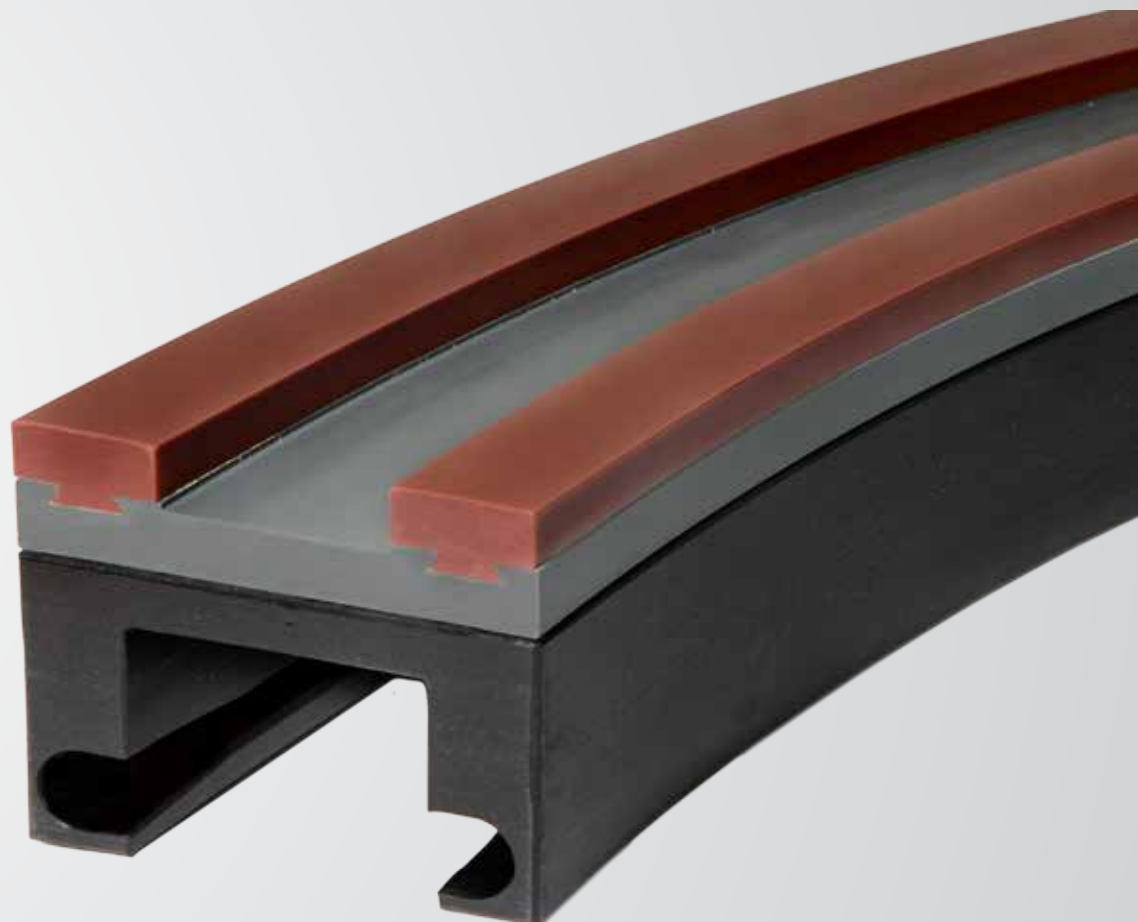


Rexnord Combi-X

New Generation Corner Tracks



Maximize Bottling Line Productivity

Rexnord Combi-X Corner Tracks for Long Wearlife and Low Noise

Introduced in 1979, Rexnord's Magnetflex® Corner Track System has become the worldwide standard in the beverage industry. The great advantages of this system have made it the choice of world leading OEM's and end users. Both plastic and steel chains can be used with the Combi System which was introduced years later as an improvement over the original Magnetflex System. Magnets underneath the track hold the chain down in a reliable way. The new Rexnord Combi-X corner tracks use proven ULF™ (Ultra Low-Friction) material profiles to lower friction, noise and wear. An advantage to Combi-X curves is the significant reduction of energy dissipated in the curve, resulting in a 70% reduction of energy consumption compared to traditional Combi curves.

The Combi-X Corner Track System is equipped with the proven Rexnord Combi chain retention design



Applications



Lubricated Conveyors

Can be used in lubricated conveyors where Nylatron® corners are not sufficient



Run Dry

Minimized noise level in dry-running applications



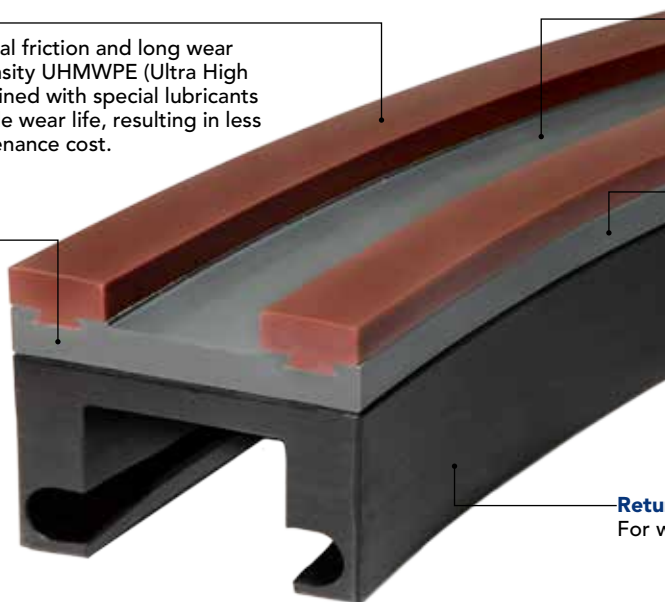
Rexnord Combi-X Features and Benefits

ULF Integrated Wearstrips

ULF integrated wearstrips offer minimal friction and long wear life. Ram extruded 6 million g/mol density UHMWPE (Ultra High Molecular Weight Polyethylene) combined with special lubricants result in lower friction and longer guide wear life, resulting in less energy consumption and lower maintenance cost.

New Generation Hybrid Construction

A patented blend of standard resin based material combined with high-performance ULF guide strips, make optimum use of different materials. Guide strips are permanently fixed to the base part.



Classic Combi Chain Retention Design

Interchangeable with previous Combi curves (same dimensions).

Machined Resin Basepart

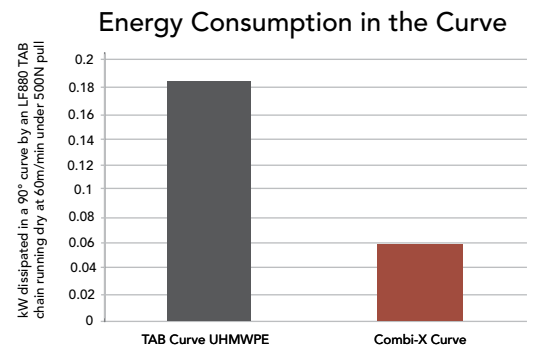
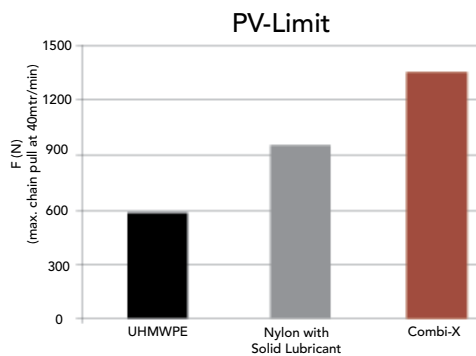
The corner track basepart is CNC (Computer Numerical Control) machined. Made out of chemical resistant polymer, characterized by high stiffness and noise absorbing properties. Smooth surface finishing allows for easy cleanability.

Return Section in Black UHMWPE

For wear and abrasion resistance.

ULF Material

Combi-X has improved PV (Pressure-Velocity) properties in comparison to lubricated nylon curve material. This means the curves can be applied in high-speed, dry-running applications, reducing noise.



Rexnord Combi-X Applications

Curve Material	Lubricated, Clean, Stainless Steel Chains, Plastic Chains	Lubricated, Abrasive, Stainless Steel Chains	Lubricated Abrasive, Plastic Chains	Dry Running, Low-Speed, Abrasive, Steel Chains	Dry Running, Low-Speed, Clean Plastic Chains	Dry Running, High-Speed, Clean Plastic Chains	Dry Running, High-Speed, Abrasive Plastic Chains
Combi-X							
UHMWPE							
Nylon with Solid Lubricant							

Best Choice
Optional

Why Choose Rexnord?

When it comes to providing highly engineered products that improve productivity and efficiency for industrial applications worldwide, Rexnord is the most reliable in the industry. Commitment to customer satisfaction and superior value extend across every business function.

Delivering Lowest Total Cost of Ownership

The highest quality products are designed to help prevent equipment downtime and increase productivity and dependable operation.

Valuable Expertise

An extensive product offering is accompanied by global sales specialists, customer service and maintenance support teams, available anytime.

Solutions to Enhance Ease of Doing Business

Commitment to operational excellence ensures the right products at the right place at the right time.

Rexnord Corporation

Rexnord is a growth-oriented, multi-platform industrial company with leading market shares and highly trusted brands that serve a diverse array of global end markets.

Process and Motion Control

The Rexnord Process and Motion Control platform designs, manufactures, markets and services specified, highly engineered mechanical components used within complex systems where our customers' reliability requirements and the cost of failure or downtime are extremely high.

Water Management

The Rexnord Water Management platform designs, procures, manufactures and markets products that provide and enhance water quality, safety, flow control and conservation.

