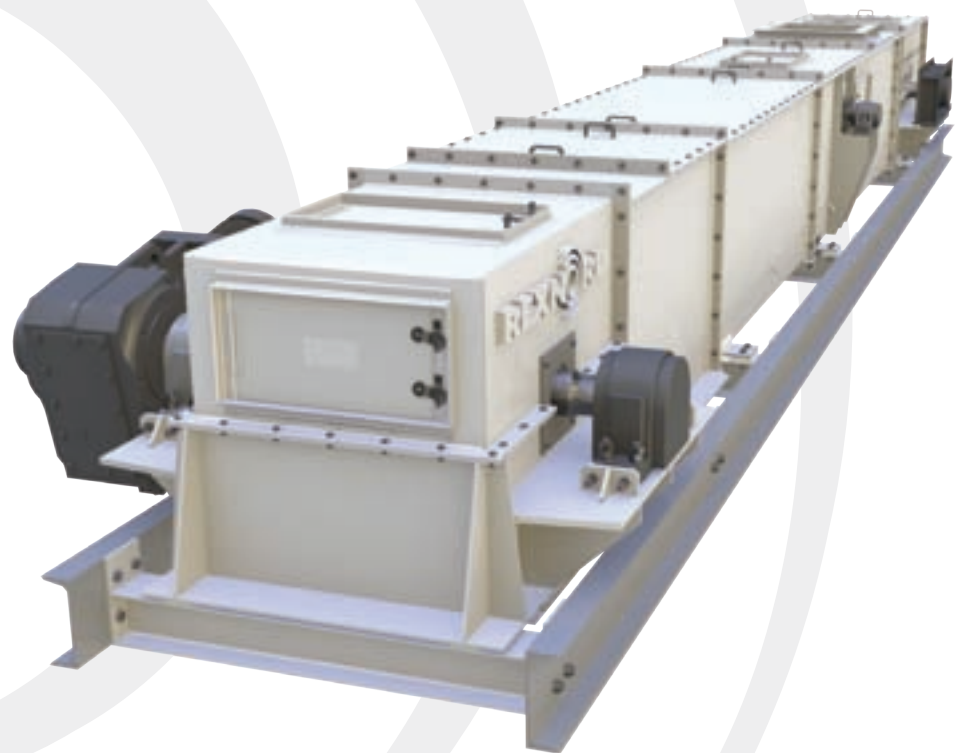


Conveying Equipment | Drag Conveyors



Rexnord Conveying Equipment

For more than 100 years, Rexnord has been a primary source for power transmission and conveying products for industries around the world. Rexnord has been designing drag conveyors for over 60 years. With our experience and know how, we have what it takes to get the job done however big or small.

Rexnord heavy duty drag conveyors are designed specifically for critical applications handling dusty, abrasive, and hot materials commonly found in heavy industries such as cement and fertilizer.

It is important to note that Rexnord designs and manufactures all critical wear components and power transmission components used in Rexnord drag conveyors unlike the competition that purchases all of the components. This includes the drag chain, gear reducer, segmental sprockets, bearings, drive chain, and coupling. This assures single source control and responsibility for manufacturing and service support for the entire drag conveyor.

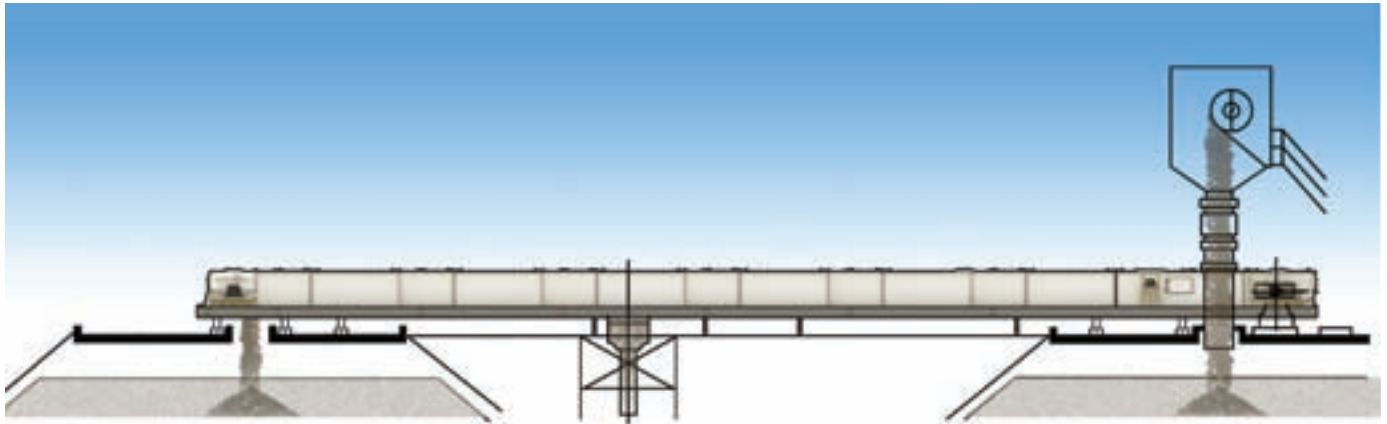


Rexnord Drag Conveyors

Drag conveyors have one or more endless strands of heavy duty chain that drags a bed of bulk material through a trough or enclosed casing. The chain moves the material due to the high internal friction of the material such as cement clinker and fertilizer products. Drag conveyors typically move the material over the bottom of the casing over the hardened wear blocks or smooth hardened plate depending on the specific material and incline.

Applications

Rexnord drag conveyors are well suited for applications that require multiple loading or discharge points, such as feed from in line storage silos. A drag conveyor is also used when dust control is critical and a totally enclosed casing is required.



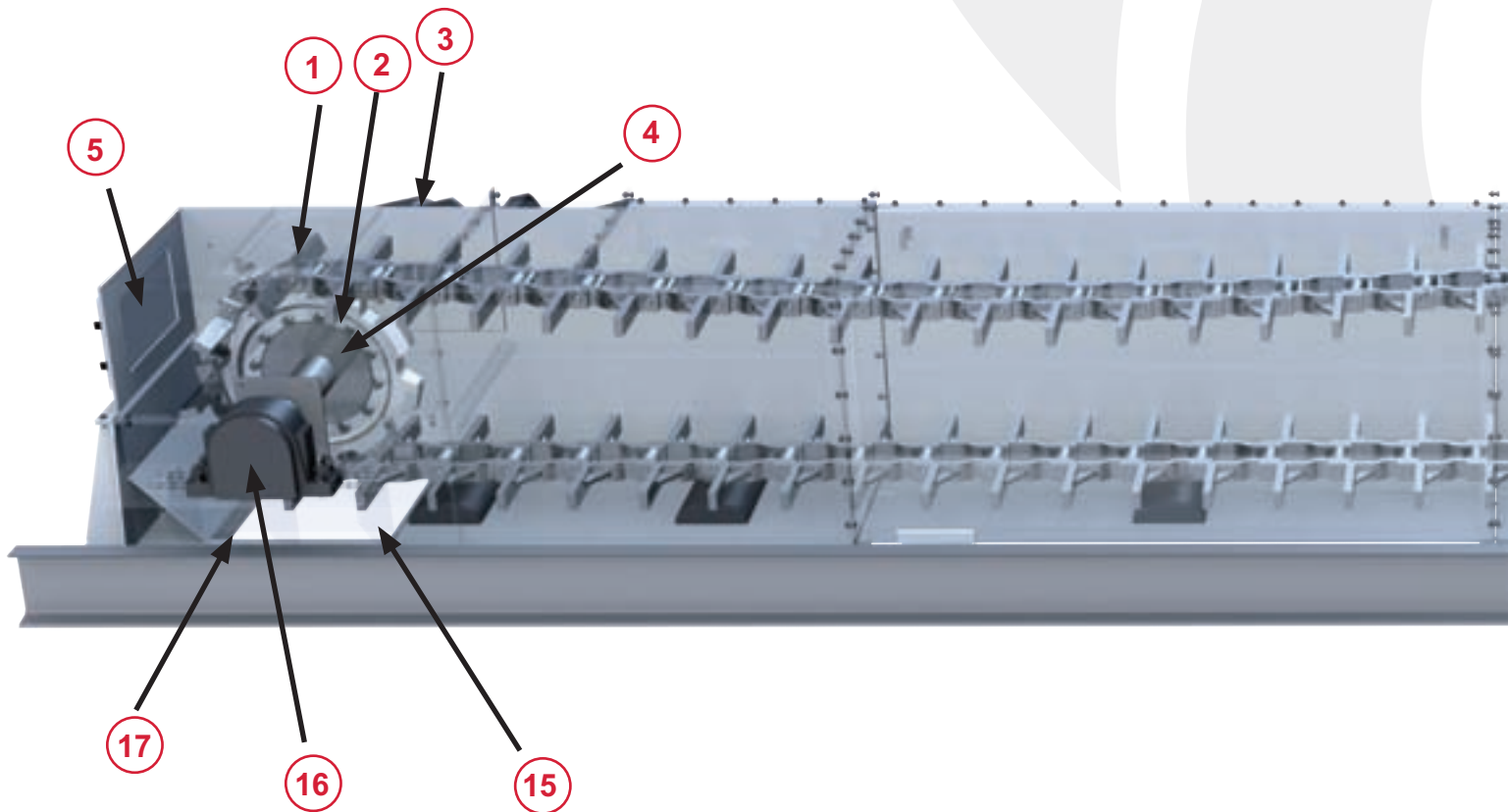
Design Parameters

- Designed for 10 - 300 STPH (9-272 MTPH) of material. Capable of handling a range of materials from dust to 6 inch (150 mm) lumps.
- A 15 degree incline is the maximum for clinker. A 12 degree incline will be the general rule of thumb for other materials.
- Material that is 800°F (427°C) or greater, the chain must be derated since it's embedded in the material it is carrying. Please consult Rexnord Conveying Equipment.
- Design up to 200 ft (61 m). If greater center distances, please contact Rexnord Conveying Equipment.
- Material commonly handled: clinker, limestone, gypsum, coal, crushed stone, hot lime, cement, fertilizer products.
- Applications that handle fine materials and applications with steep inclines require the use of a V flight heavy duty drag chain.

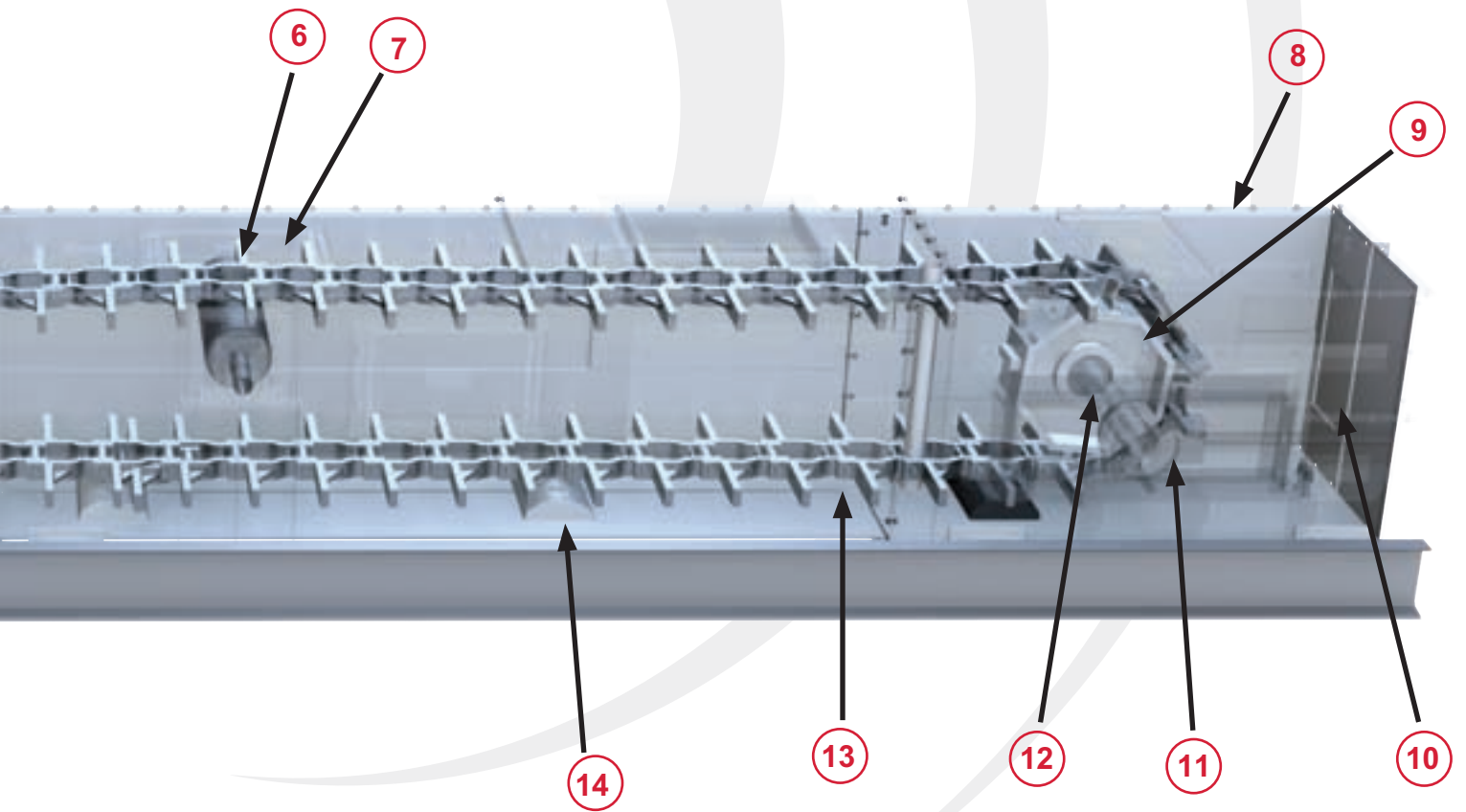
Information Required to Quote

Material	
Minimum Material Density	PCF/ KG/m ³
Maximum Material Density	PCF/ KG/m ³
Temperature	F/ C degrees
Lump Size	in/ mm
Percentage of Moisture	%
Abrasiveness	
Capacity	STPH/ MTPH
Conveyor Shaft Centers	Feet/ Meters
No. of Discharge Points	
Horizontal or Incline Degrees	
Casing Size (Retrofit)	

1. Heavy Duty Rexnord® WHX drag chain
2. Hardened steel segmental sprocket with body secured to headshaft
-Allows for easy maintenance and replacement.
3. Rexnord or Falk gear reducer
4. AISI C-1045 CFS Headshaft
5. Hinged inspection doors
6. Return roller
7. Return roller bearing and packing
8. ¼" (6 mm) steel casing construction
9. Rexnord® Octagonal tail wheel with guide lugs
10. Rexnord® ZHT heavy duty screw take-up bearings



- 11. Motion Indicator probe mounted at tail section
- 12. AISI C-1045 CFS Tailshaft
- 13. AR Liner plates
- 14. Rexnord wear blocks on the bottom of the casing
- 15. Slide gates for multiple discharge (Option)
- 16. Rexnord® or Link-Belt® heavy duty spherical roller bearings
- 17. ¼" (6 mm) discharge flange

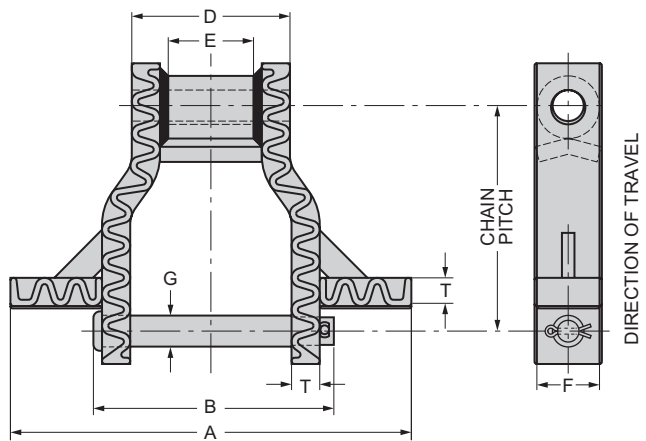


Rexnord® Heavy Duty Drag Chain made in the USA

Reduce maintenance and downtime with Rexnord heavy duty welded drag chain while increasing your conveying efficiency!

This premium performance drag chain features:

- Hardface welding on both of the chain's sliding surfaces as standard. A typical weld hardness of 58 Rc and a heavy weld bead give this chain excellent wear resistance in cold clinker applications.
- Interference fit between the pin and chain sidebar dramatically improves chain strength and joint wear life over that of cast drag chain. No loose pins to move around the chain joint.
- An Induction Hardened pin gives the best of two worlds – a 60 Rc typical case and tough, impact resistant material in the balance of the pin. The result: wear resistance coupled with impact resistance.
- Square edges on the wing and sidebar or welded drag chain conveys more efficiently than rounded cast chain edges and moves a deeper bed of material with each revolution of the chain.
- Heat treated and fabricated steel components eliminate the failures that cast chains experience from casting porosity and inclusions.



Heavy Duty Welded Steel Drag Chain												
Chain Number	Pitch	A	Sidebars			Pins			D	E	Rated Working Load	Sprocket Number
			T	F	Heat Treat	B	G	Heat Treat				
WHX5157	6.05 154	8 - 14" 203 - 356	0.63 16	2.50 63.5	TH	6.94 176	1.13 28.7	SIH	4.63 118	2.75 69.9	18,200 81,000	5157
WHX6067	9.00 229	10 - 26" 254 - 660	0.75 19.1	2.50 63.5	TH	8.19 208	1.25 31.8	CIH	5.5 140	6.63 92.2	24,300 108,000	6121
WHX5121*	9.00 229	10 - 30" 254 - 762	1.13 28.7	2.50 63.5	TH	9.75 248	1.25 31.8	CIH	6.31 160	6.63 92.2	27,600 123,000	6121
WHX6121	9.00 229	10 - 30" 254 - 762	1.13 28.7	2.50 63.5	TH	9.75 248	1.25 31.8	CIH	6.31 160	6.63 92.2	27,600 123,000	6121

*WHX 5121 is dimensionally the same as WHX 6121 except it runs closed end forward.

TH: Thru-hardened CIH: Circumferential Induction Hardened after thru-hardening CARB: Carburized

Dimensions shown are in inches and working load in pounds. Red dimensions are millimeters and Newtons.

Dimensions are subject to change. Certified drawings are available upon request.

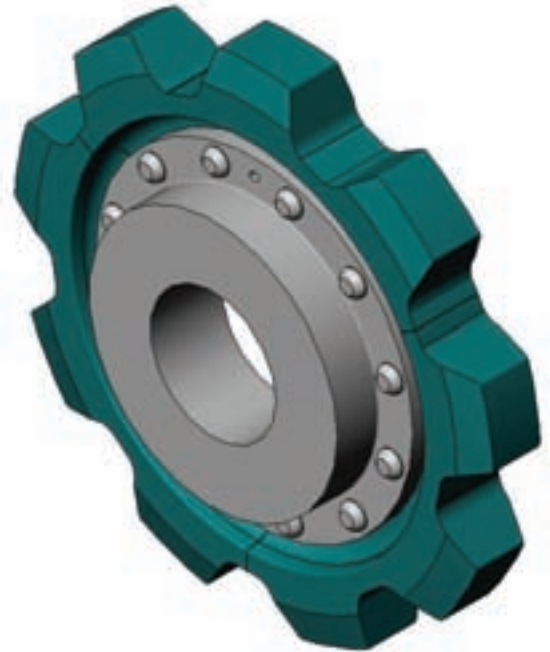
Fabricated Steel Sprockets and Octagonal Tail Wheels for HEAVY DUTY WELDED STEEL DRAG CHAINS

Flame Cut Steel Sprocket with Hardened Teeth

Drive Sprockets								
Rex Unit Number	Number of Teeth	Pitch Diameter	Body	Bolts	B-Loc	Body Style	Bore Range	Weight*
5157	8	15.81" 402mm	9	12	B-106	Plate	3.4375" - 4.4375" 90mm - 110mm	116 lbs* 53 kg*
	9	17.69" 449mm	10	12	B-115	Offset	2.75" - 3.5" 70mm - 90mm	129 lbs* 59 kg*
	10	19.58" 497mm	12	12	B112	Offset	4.9375" - 5.9375" 130mm - 150mm	139 lbs* 63 kg*
5121, 6067 and 6121	8	23.52" 597mm	12	12	B112	Offset	4.9375" - 5.9375" 130mm - 150mm	258 lbs* 117 kg*
	9	26.31" 668mm	16	12	B106	Central	6.4375" - 8" 170mm - 200mm	383 lbs* 174 kg*
	9	26.31" 668mm	16	12	B115	Offset	6.4375" - 8" 170mm - 220mm	343 lbs* 156 kg*
	9	26.31" 668mm	16	12	B112	Offset	4.375" - 6" 130mm - 160mm	389 lbs* 177 kg*
	9	26.31" 668mm	16	12	B112	Central	6.4375" - 8.5" 170mm - 220mm	370 lbs* 168 kg*

*Weight will vary depending on bore

Drive sprockets come in 3 segments for ease of handling and replacement



(Teeth are hardened to Rc57)

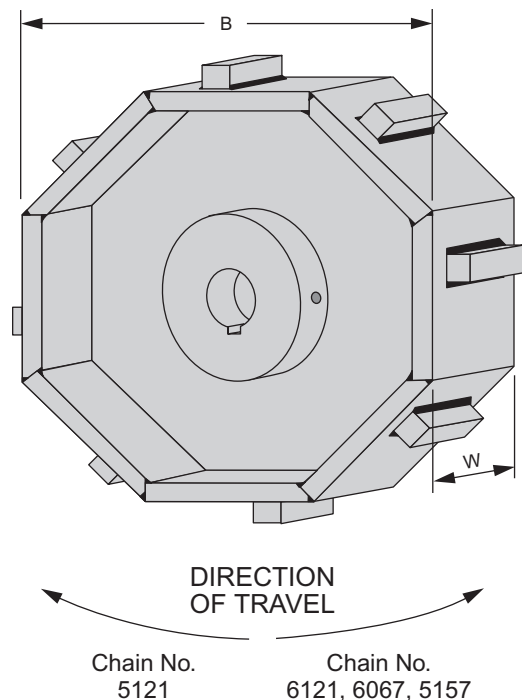
Octagonal Tail Wheels

Octagonal tail wheels offer several advantages over conventional sprockets. Chain/tail wheel forces are transmitted directly between sidebars and the octagon surfaces, eliminating barrel and sprocket tooth wear. Side guide lugs are provided to keep the chain centralized on the tail wheel.

Octagon plates and guide lugs are made of hardened steel. Sidebar contact surfaces can be hard faced for maximum wear resistance.

Rex Chain Number	Bottom Flat "B"	Width "W"
WHX5157	11.85" 301mm	6.50" 165mm
WHX6067	18.88" 480mm	7.50" 191mm
WHX5121 / WHX6121	18.88" 480mm	9.00" 239mm

B-Loc Bore Range
0 to 3.937" 0 to 100mm
4 to 4.937" 102 to 125mm
5 to 5.937" 127 to 151mm



Conveyor and Elevator System Solutions

- **Rexnord® Heavy Duty Drag Chain made in the USA**
- Retrofits of existing installations (Quality, productivity, capacity)
- Solutions yield larger capacities, fewer components and longer wear life and maintenance intervals, resulting in a lower total cost of ownership

Quality, Reputation and Reliability

- 100+ years of experience
- 6600 Installations worldwide
- World class support
- Rexnord professionals available for worldwide support
- Six Sigma quality standards
- Kaizen methodology and lean tools drive process improvement

After Sale Customer Support

- Rexnord Technical Service (RTS) – Problem Investigation, and Product Testing
- Preventative maintenance training
- Field service support and preventative maintenance assistance
- Chain wear analysis program
- Extended warranties available

Rexnord can help retrofit your existing drag conveyors, pan conveyors, apron feeders, and belt elevators into a reliable piece of equipment. Rexnord has the staff to support your plant with local Account Executives, Customer Service Professionals, Product Specialists, Applications Engineers, and Field Service Engineers ready to help your plant out. Please contact your local distributor.

**Please contact Rexnord
Conveying Equipment
at 414-643-2805**

WORLDWIDE CUSTOMER SERVICE

AUSTRALIA

Rexnord Australia Pty. Ltd.
Picton, New South Wales
Phone: 61-2-4677-3811
Fax: 61-2-4677-3812

Falk-Rexnord Australia Pty Ltd
Broadmeadow New South Wales
Phone: 61-2-4962-8000
Fax: 61-2-4962-8001

BRAZIL

Rexnord Correntes Ltda.
Sao Leopoldo - RS
Phone: 55-51-579-8022
Fax: 55-51-579-8029

CANADA

Rexnord Canada Ltd.
Scarborough, Ontario
Phone: 1-416-297-6868
Fax: 1-416-297-6873

CHINA

Rexnord China
Shanghai, China
Phone: 86-21-62701942
Fax: 86-21-62701943

EUROPE

Rexnord NV/SA
Mechelen, Belgium
Phone: 32-15-443881
Fax: 32-15-443860

LATIN AMERICA

Rexnord International
Milwaukee, Wisconsin
Phone: 1-414-643-2366
Fax: 1-414-643-3222
E-mail: international1@rexnord.com

MEXICO

Rexnord S. A. de C. V.
Mexico DF, Mexico
Phone: 52-55-9140-3500
Fax: 52-55-9140-3550

SINGAPORE

Rexnord International, Inc.
Singapore City, Singapore
Phone: 65-6338-5622
Fax: 65-6338-5422

UNITED STATES

Customer Service
Phone: 866-Rexnord
(866-739-6673)
E-mail: rexnordcs(state)@rexnord.com
Example: rexnordcsohio@rexnord.com

ALL COUNTRIES NOT LISTED ABOVE

Rexnord International
Milwaukee, Wisconsin
Phone: 1-414-643-2366
Fax: 1-414-643-3222
E-mail: international2@rexnord.com