

**FALK**  
V-CLASS

BORN TO LEAD. BUILT TO LAST.



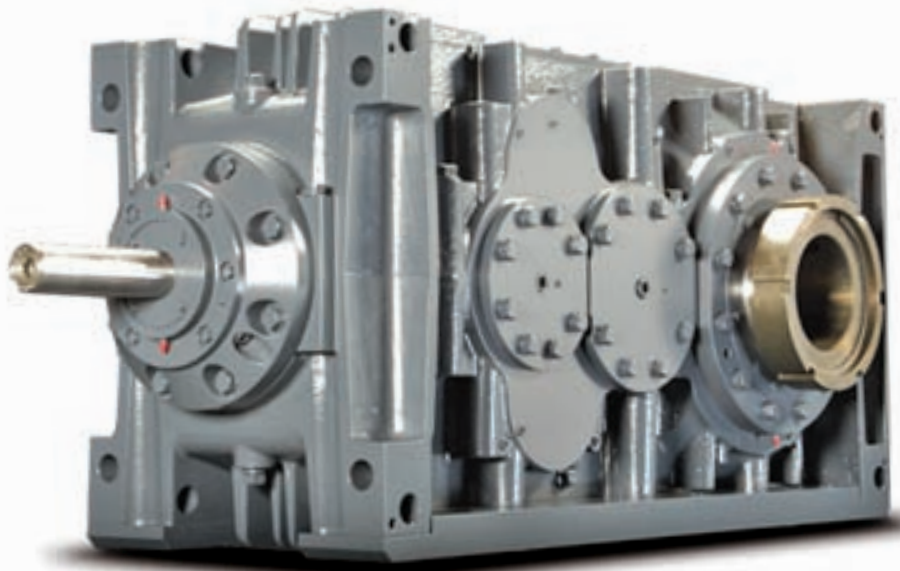
It has more than 100,000 engineering hours – and 100 years of Falk history – backing it up. We're proud to introduce the Falk V-Class™.

# The Falk V-Class™ sets a new standard in gear drives

Extreme industrial applications demand a gear drive that performs every day, no exception. That means longer seal life, improved thermal performance and increased operating life. It means shorter lead times, convenient serviceability, and faster, easy-access support. It means the Falk V-Class – a drive engineered to deliver power, durability, and reliability under the toughest conditions.

## When uptime matters, trust the Falk V-Class

Solid, dependable, proven, and backed by an industry-leading 3-year warranty, this drive really delivers the difference. Whether your business is coal, hard rock, energy, cement and aggregate, or pulp and paper, the Falk V-Class will handle your most rigorous production needs. We're Falk...a good name in industry. And we put our customers first every day, year after year.



**WE ARE NOT AFRAID OF**

# EXTREMES



• TOUGH • RELIABLE • COOL • EASY TO SERVICE • QUIET • SHIPS FAST • GLOBAL • PROVEN • TOUGH • RELIABLE • COOL •



## More torque capacity to handle the heaviest loads

TOUGH

- **25° pressure angle gear teeth** provide superior strength and durability
- **Case-hardened and ground gears** provide greater strength and minimize wear
- **Optimized bevel and helical tooth forms** deliver smooth torque transmission by ensuring full contact under load
- **Proprietary peened gear teeth** provide greater strength and longer life
- **Highest quality gear sets up to AGMA Class 12** for exceptional durability
- **Heavy-duty ductile iron housing** withstands shock loads



## Steadfast dependability in demanding conditions

RELIABLE

- **Magnum seals have an exclusive no-leak design** with a purgeable grease chamber, and a contact seal that eliminates oil leaks, while keeping dirt out
- **Radial and axial bush seals with drainback** eliminate oil leaks and prevent contact between surfaces
- **Larger, stronger, spherical and tapered roller bearings** handle heavier loads for greater torque
- **Cast-in oil dams** keep bearings lubricated and cool for reliable operation
- **Proven heat-resistant Viton® and nitrile lip seals** last longer
- **Steel shims** ensure bearing settings are maintained for long life

## Quiet drive train for noise-sensitive areas

QUIET

- **Noise reduction** allows for enhanced workplace safety
- **Significantly quieter** than comparable gear drives

## Runs cooler for a longer operating life

COOL

- **Cooling fins on the housing** reduce oil temperature
- **Proprietary oil feed passages in the housing** improve lubrication and provide optimal cooling
- **Optional DuraPlate™ patent-pending cooling system** controls oil temperatures in the most extreme conditions
- **Computational Fluid Dynamics (CFD)** engineering provides optimal thermal dissipation

## Designed to maximize uptime and profitability

EASY TO SERVICE

- **Horizontal split housing** allows easy disassembly/assembly for maintenance of bearings and gearing
- **Removable, adjustable feet** allow drop-in replacement for current product lines, and easily adapt for replacement of competitor drives and different shaft centerline heights
- **Base-mounted units** can be repaired in place
- **Multiple oil ports** allow fast, easy oil changes
- **Steel shims** for easily adjustable bearing settings
- **Easily-replaceable and adjustable lip seals** reduce downtime
- **Pre-cast locations for condition monitoring** make it easy to check your drive's health
- **Globally compatible** for ease of service anywhere in the world

NO REST FOR THE

RUGGED



• TOUGH • RELIABLE • COOL • EASY TO SERVICE • QUIET • SHIPS FAST • GLOBAL • PROVEN • TOUGH • RELIABLE • COOL •

## Unprecedented design and test procedures

PROVEN

We dedicated more than 100,000 engineering hours to designing the Falk V-Class™ to be the most dependable gear drive ever built. Then, we put it through the most rigorous testing any drive has ever faced. The Falk V-Class triumphed, exceeding our expectations across the board.

## Superior thermal performance

Cooler thermal performance assists in extended operating life. Cooler running oil increases film thickness, durability and reliability. A decrease in temperature increases the service life of a lubricant. Falk V-Class is designed with thermal packages based upon 180°F (82°C) sump temperature or the AGMA standard of 200°F (93°C).

## Delivery when you need it

SHIPS FAST

As the world leader in gear drives, we have the depth and breadth of experience necessary to help you reach the level you need to compete. From delivery and installation, to maintenance and service – when you need us, we’re there. Our commitment to your success is why we developed the Falk V-Class, a drive so superior it excels under the most demanding conditions in the most extreme environments, every day.

## Backed by a world of resources

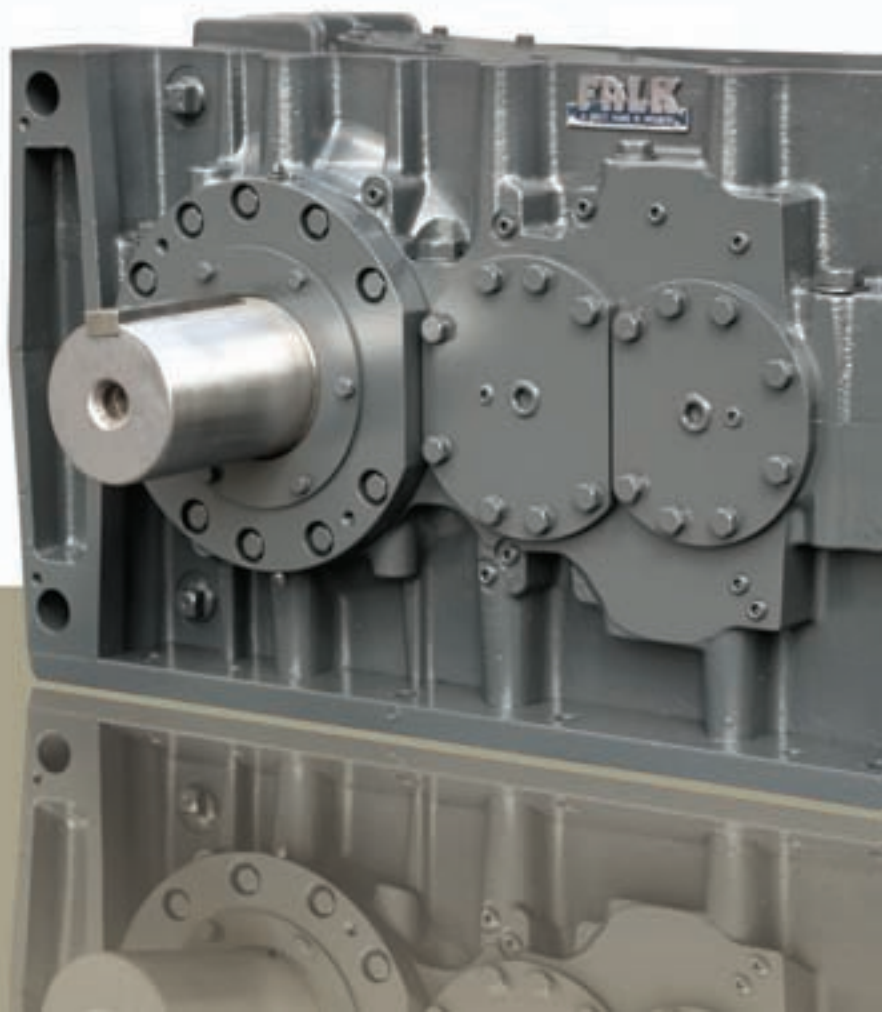
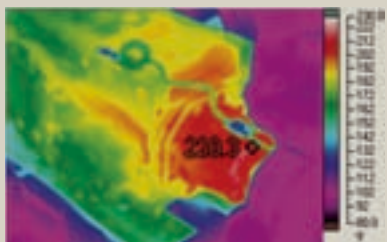
GLOBAL

The Falk V-Class is globally compatible. Our worldwide network of service providers ensures fast response and greater parts availability at any time – anywhere in the world. This comprehensive support network, combined with our best-in-the-industry 3-year warranty, assures you that the Falk V-Class will be everything you’ve asked for and more.

Falk V-Class



Comparable Gear Drive



L • EASY TO SERVICE • QUIET • SHIPS FAST • GLOBAL • PROVEN • TOUGH • RELIABLE • COOL • EASY TO SERVICE • QUIET •

## A Good Name in Industry just got better

# HISTORY

For more than 100 years, Falk has been providing high quality, durable drives for heavy-duty industrial use around the world. We're known for revolutionizing the industry. Throughout our long and storied history, one thing has remained the same – our commitment to providing customers with the drives they need to succeed. This dedication is why the Falk name has come to be synonymous with reliability, durability...and trust.

<b>Torque range</b>	<i>up to 3,020,000 in-lbs (341,000 Nm)</i>	
<b>Horsepower range</b>	<i>15 – 10,000 hp (11 – 7457 kw)</i>	
<b>Ratio ranges</b>	<i>Parallel shaft</i>	<i>Single reduction 1.25 – 5.0</i>
		<i>Double reduction 5.0 – 28.0</i>
		<i>Triple reduction 28.0 – 160.0</i>
	<i>Right angle</i>	<i>Double reduction 6.3 – 12.5</i>
<i>Triple reduction 12.5 – 125.0</i>		



BORN TO LEAD. BUILT TO LAST.



GEAR



CHAIN



BEARINGS



COUPLINGS



Rexnord Industries, LLC  
4701 W. Greenfield Ave.  
Milwaukee, WI 53214

866.REXNORD  
1-414-643-2366

[www.rexnord.com](http://www.rexnord.com)

Rexnord is a diversified multi-platform industrial company that manufactures and markets power transmission and water management products. We are driven to provide innovative solutions and deliver superior service to our customers, by applying our philosophy of continuous improvement to all aspects of what we do.

THE REXNORD FAMILY OF POWER TRANSMISSION PRODUCTS  
FALK™ RENEW™ REXNORD™ LINK-BELT™ MB™