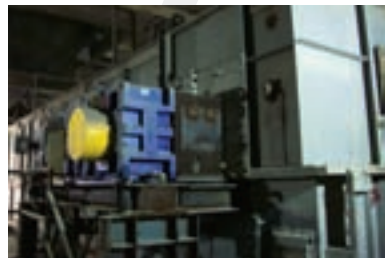
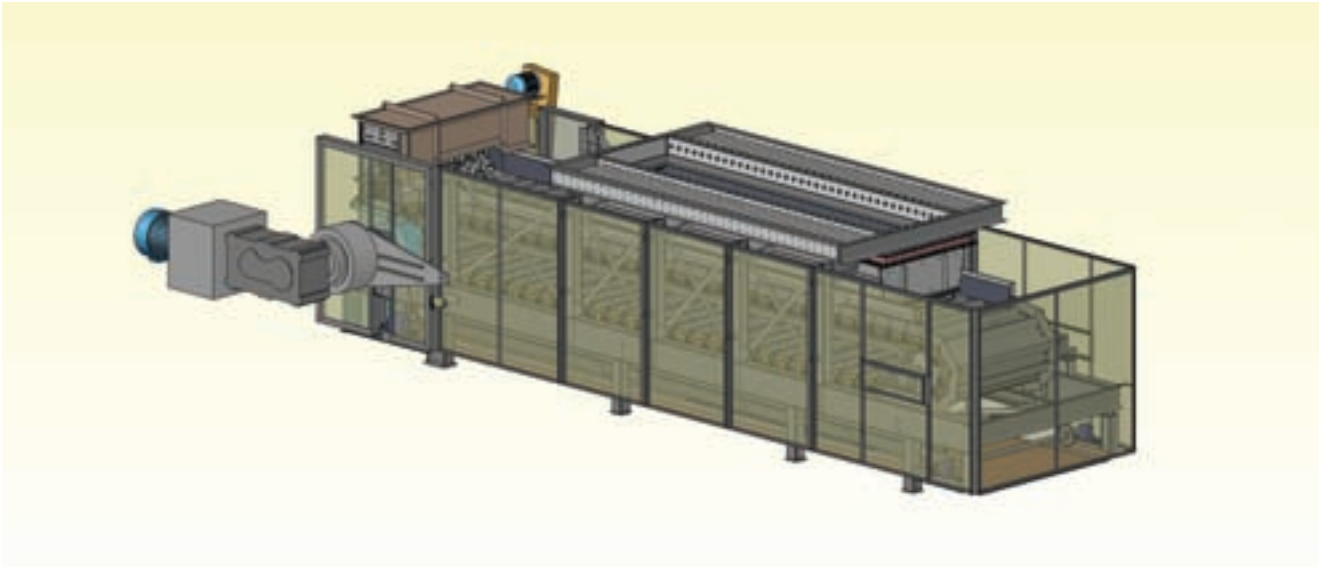


Conveying Equipment | Apron Feeders



Rexnord Apron Feeders – The Industry's most preferred feeder.

Look to Rexnord for the right answer to bulk material feeding solutions. Whatever the material to be moved, the best method will be found with the complete line of Rexnord Apron Feeders. The Rexnord design and engineering team will review specifications and recommend the best option for your application. With 6,600 installations world wide Rexnord has the experience and the know how to do what it takes to get the job done right however big or small.



Protect against impact

Rexnord Apron Feeders, with their continuous apron of overlapping pans, provide protection against damaging impact of free-falling heavy materials when feeding belt conveyors, screens, crushers and other material handling equipment.

Prevent flooding

Rexnord Apron Feeders are the solution to flooding problems by regulating delivery of material. They control surge loads and thereby prevent jamming and flooding. They can be operated at a fixed or variable feed rate.

Permit controlled feeding

When you want an efficient, trouble-free, metered-delivery method of feeding crushers or conveying systems, Rexnord Apron Feeders are the answer! Controlled feeding supplies desired capacities from hoppers to other handling equipment at the proper rate of flow for maximum production and efficiency of the system. Their steady feed makes them safeguards for crushers and conveyors.

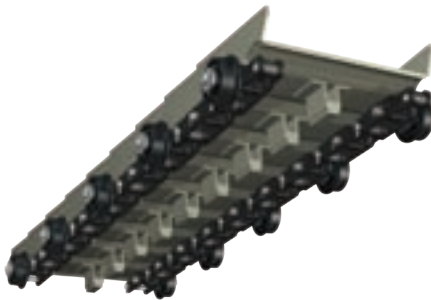
Provide controlled live storage

Located to form a bin bottom, Rexnord Apron Feeders permit drawing on stored capacity when and as needed. The heavy-duty design provides strength and ruggedness to withstand abrasion and high loading.

Feeder Types

Frame Roller Supported

- This style feeder is designed to meet the demands of severe service, e.g., very large lumps, high impact and abrasion.
- The two strands of chain are attached via “K” style attachments to Style A pans.
- The carrying rollers are mounted on the frame and support the chain on the sideboards. The sidebars absorb the impact and carry the load.



Chain Roller Supported

- This style feeder is used for lighter duty applications - consistent lump size and minimal impact.
- Two strands of “K” style attachment chain attached to style A pans.
- The carrying rollers are “inboard”, at the chain joint, to support the pans on the carrying run.

Outboard Roller Supported

- This style feeder is designed for medium service requirements, e.g., larger lump size and higher impact. (*impact shoe)
- The Style A pans are secured to two strands of chain by equalizing (Tri-Lok) saddles.
- The “outboard” rollers are located at mid chain pitch (“M14” attachment) and support the pans on the carrying and return runs.
- Advantage: Easy component replacement.



Information Required to Quote

Material	
Minimum Material Density	PCF/ Kg/m ³
Maximum Material Density	PCF/ Kg/m ³
Temperature	F/ C degrees
Material Size	in/ mm
Percentage of Moisture	%
Flowability [†]	
Abrasiveness	
Capacity	STPH/ MTPH
Horizontal or Incline Degrees	
Conveyor Shaft Centers	Feet/ Meters
*Loading: Uniform or Impact	
Negative Pressure	
Lump breaker required	Y/N

[†] Very Free Flowing, Free-flowing, Average Free-flowing, Sluggish

*Free fall, cushioned fall or mass release

Design Parameters

- Designed up to 1,653 STPH (1,500 MTPH) larger capacities upon request.
- Capable of handling a wide range of abrasive and lumpy materials
- Maximum Incline (25 degrees from the horizontal)
- Capable of handling material up to 600° F (315° C)
- C-C Designed up to 50 Ft (15.24 m) larger C-C upon request



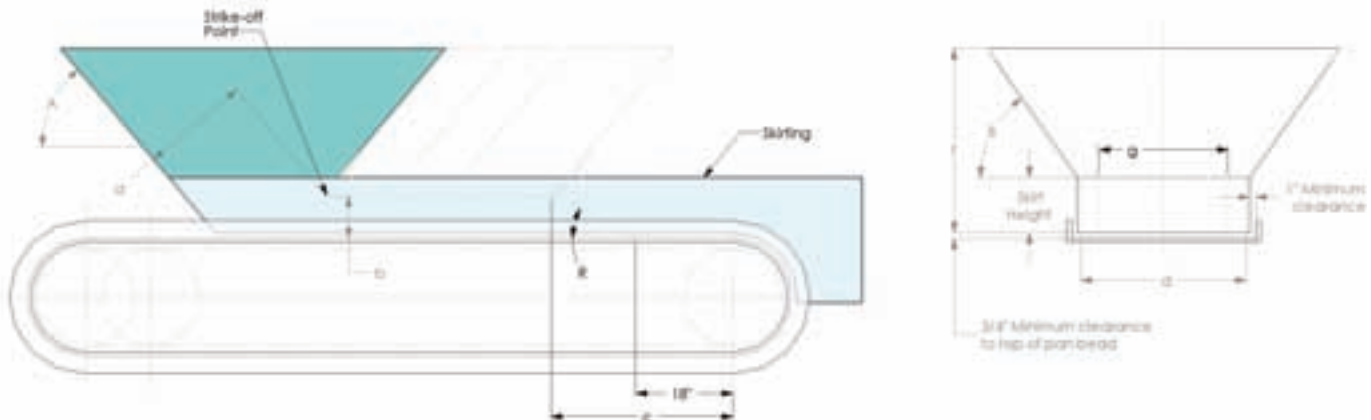
Materials Handled

- Limestone
- Sand
- Clay
- Shale
- Coal
- Fertilizer
- Pellets
- Phosphate Ore
- Steel crops
- Sugar cane
- Castings
- Lime
- DAP
- Trap rock
- Ore
- Magnesite
- Dolomite
- Molybdenite
- Gypsum
- Bauxite
- and other materials

Contact Rexnord Conveying Equipment for a Feeder quote request form

Bin and Skirt Design

Considerations for bin and skirt design. In general, “bins” and “hoppers” are interchangeable in speaking but have subtle differences. A bin is a container of nonrestrictive dimensions for storing of bulk material, while a hopper is a container designed to receive limited amounts of material and having a funnel shaped bottom narrowed or necked down to direct materials to a feeder.



The shape and size of bins and hoppers are dependent upon two basic criteria:

1. Physical properties of the materials to be handled.

- A. Lump size
- B. Distribution of lump size
- C. Angle of slide
- D. Moisture content
- E. Temperature
- F. Friability

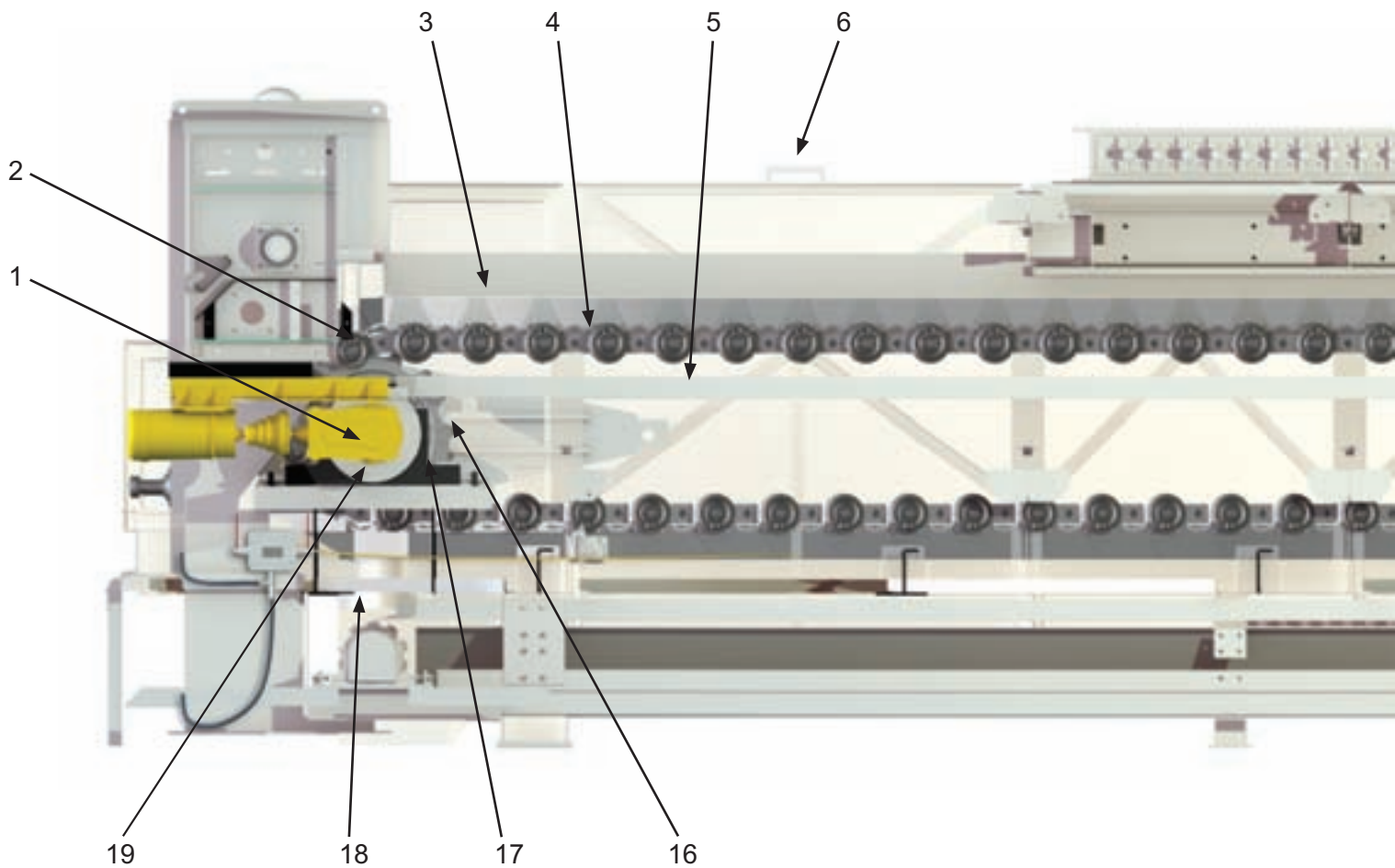
2. Required holding capacity.

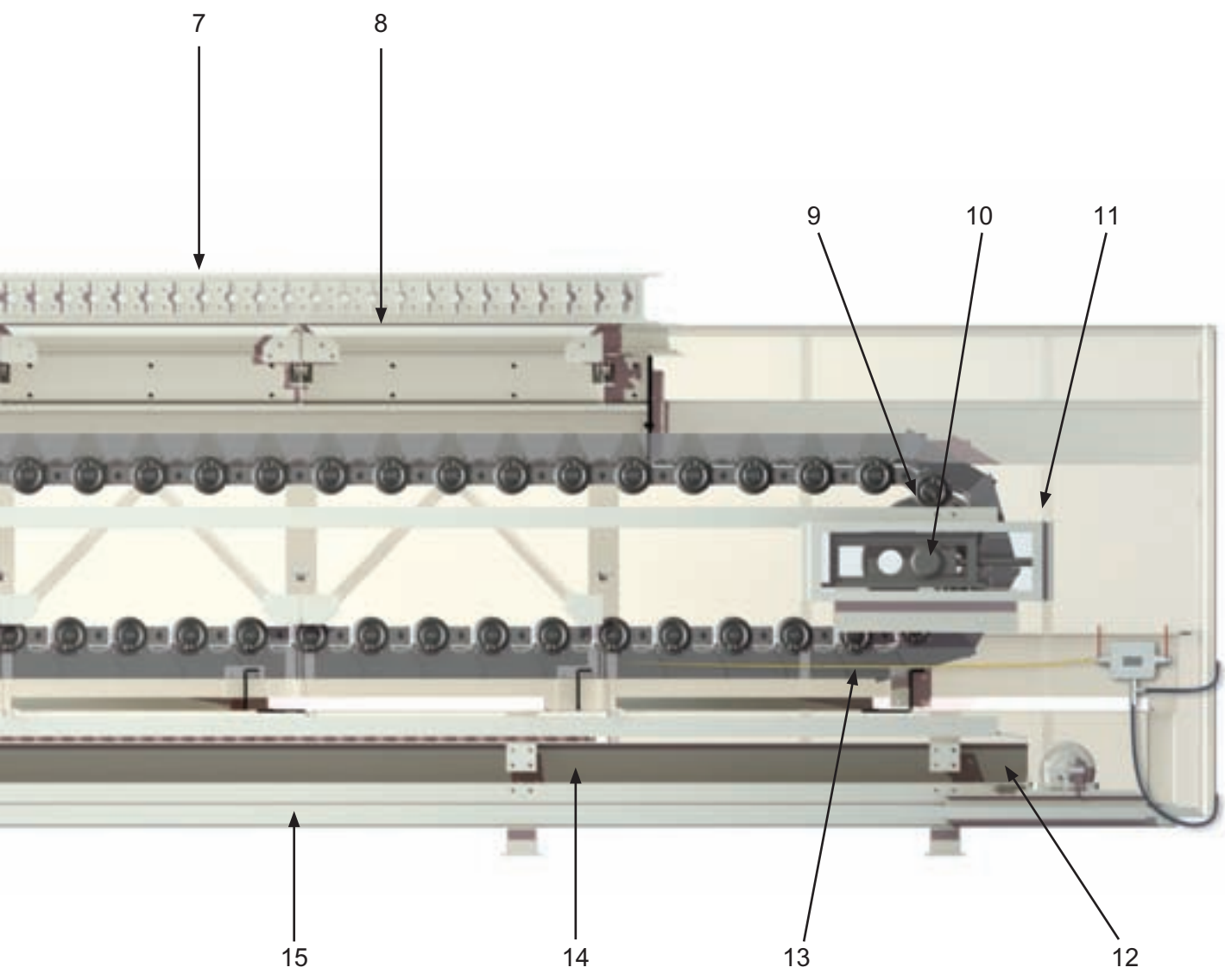
“A” and “B” angles combine to form a valley angle. This angle must be at least as steep as the angle of the slide of the material to be handled. (Ordinarily the angle of slide is 5-10 degrees steeper than the angle of repose.)

- A. Throat opening should be at least 2.5 times the maximum lump size.
- B. Clearance under strike off point should be at least 1.5 times the maximum lump size.
- C. Headshaft location to prevent material flow when it is not running should be 18” past the repose angle (angle R) immediately outside the bin opening.
- D. Width between skirts should be at least 2.5 times the max lump size and provide a running clearance of 1” between the outside of the skirts and the inside of the pan ends.
- F. Hopper height is dependent on required holding capacity.
- G. Width at the tail end is tapered to approximately 75% of width at head end to reduce wedging and friction.

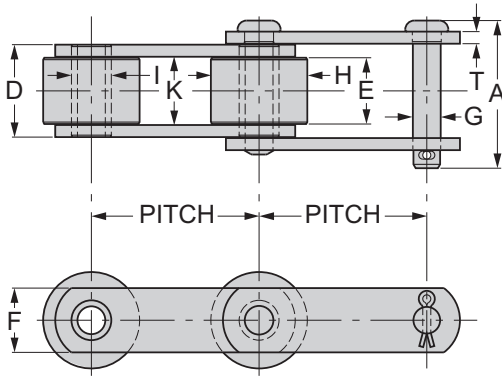
** Dimensions subject to change.**

1. AISI C-1045 CFS headshaft
2. Heavy duty Rexnord chain
3. Style "A" pans
4. Rollers (Style BXT, 1, 1A, and 2)
5. Rail
6. Inspection doors with speed handles
7. Pin gates
8. Isolation joints
9. Hardened steel traction wheels
10. AISI C-1045 CFS tailshaft
11. Rexnord ZHT heavy duty screw take up bearings
12. Dribble conveyor
13. Cable operated stop switch
14. Rexnord welded steel chain with scraper bars
15. ¼" (6 mm) steel casing construction
16. Hardened steel segmental sprockets with body secured to headshaft
17. Rexnord or Linkbelt heavy duty spherical bearings
18. Milltronics Motion indicator probe
19. Rexnord or Falk gear reducer

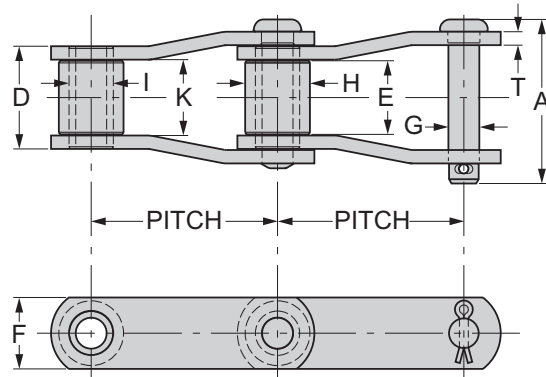




Chain Data



STYLE R

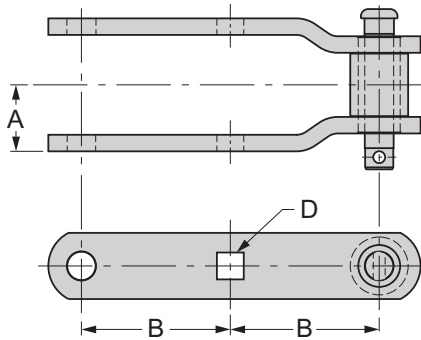


STYLE K

Chain Number	Pitch	Rated Working Load	Style	Overall Pin	Between Sidebars	Sidebars		Pins		Rollers			Bushings		Sprocket Number
				A	K	T	F	G	Heat Treat	E	H	Heat Treat	D	I	
R2342	9.00	9,000	K	4.84	1.94	0.5	2.00	0.88	CIH	1.89	1.75	CARB	2.937	1.25	2342
	228.6	40,000		122.9	49.3	12.7	50.8	22.35		48	44.5		74.6	31.8	
RR2397	12.00	9,200	K	4.18	2.19	0.38	2.50	0.88	CARB	2.12	1.75	CARB	2.937	1.25	2397
	304.8	40,900		106.7	55.7	9.65	63.5	22.35		53.9	44.5		74.6	31.8	
R2614	12.00	17,500	K	6.17	2.75	0.62	3.50	1.25	CIH	2.69	2.5	CARB	4	1.75	2614
	304.8	77,800		156.7	69.9	15.75	88.9	31.75		68.3	63.5		101.6	44.5	
R2648	12.00	29,500	K	7.74	3.69	0.75	4.00	1.62	CIH	3.61	3.25	CARB	5.187	2.37	2648
	304.8	131,200		197	23.7	19.05	101.6	41.15		91.7	82.6		131.75	60.2	
1036	6.00	4,600	K	3.42	1.5	0.312	1.50	0.62	CARB	1.45	1.25	TH	2.125	0.88	1036
	152.4	20,400		86.9	38.1	7.93	38.1	15.75		36.8	31.8		54.0	22.35	
1039	9.00	4,650	K	3.42	1.5	0.312	1.50	0.62	CARB	1.45	1.25	TH	2.125	0.88	1039
	228.6	20,600		86.9	38.1	7.93	38.1	15.75		36.9	31.8		54	22.35	
D2124	6.00	6,000	R	3.89	1.56	0.38	2.00	0.75	TH	1.51	2.75	CARB	2.31	1.125	2124
	152.4	26,700		98.8	39.6	9.65	50.8	19.05		38.4	69.9		58.7	28.58	
531	4.00	4,500	R	3.46	1.31	0.38	1.50	0.62	CARB	1.27	2.25	CARB	2.06	0.94	531
	101.6	20,000		87.9	34.0	9.65	38.1	15.75		32.3	57.2		52.3	23.88	

- Consult with Rexnord engineering for apron feeder chains.
- **TH:** Thru-hardened **CIH:** Circuferential Induction Hardened after thru-hardening **CARB:** Carburized
- Dimensions shown are in inches and working load in pounds
- Red dimensions are millimeters and working load in Newtons
- Dimensions are subject to change. Certified drawings are available upon request.

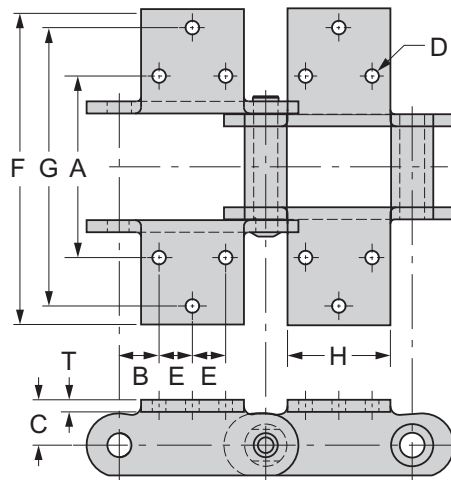
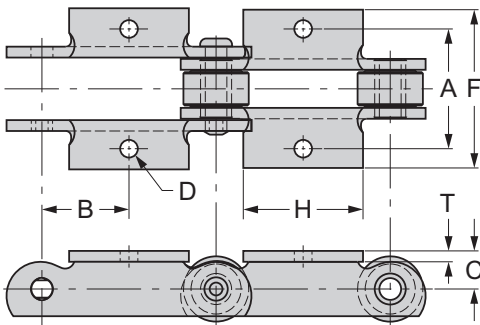
M-14 Attachment



Rexnord Chain Number	Average Pitch	A	B	Bolt Dia	Bolt Hole	Weight
1036	6.00	1.39	3.00	9/16	Slots	4.7 lbs
	152.4	35.3	76.2	14.3		2.13 kg
1039	9.00	1.39	4.50	9/16	Slots	4.2 lbs
	228.6	35.3	114.3	14.3		1.91 kg
R2342	9.00	2.00	4.50	3/4	Slots	9 lbs
	228.6	50.8	114.3	19.1		4.08 kg
RR2397	12.00	1.90	6.00	7/8	Slots	9.3 lbs
	304.8	48.3	152.4	22.2		4.22 kg
R2614	12.00	2.66	6.00	1 - 1/4	Slots	23.4 lbs
	304.8	67.6	152.4	31.8		10.61 kg
R2648	12.00	3.40	6.00	1 - 1/4	Slots	35 lbs
	304.8	86.4	152.4	31.8		15.87 kg

- Dimensions shown are in inches
- Red dimensions are millimeters
- Dimensions are subject to change. Certified drawings are available upon request.

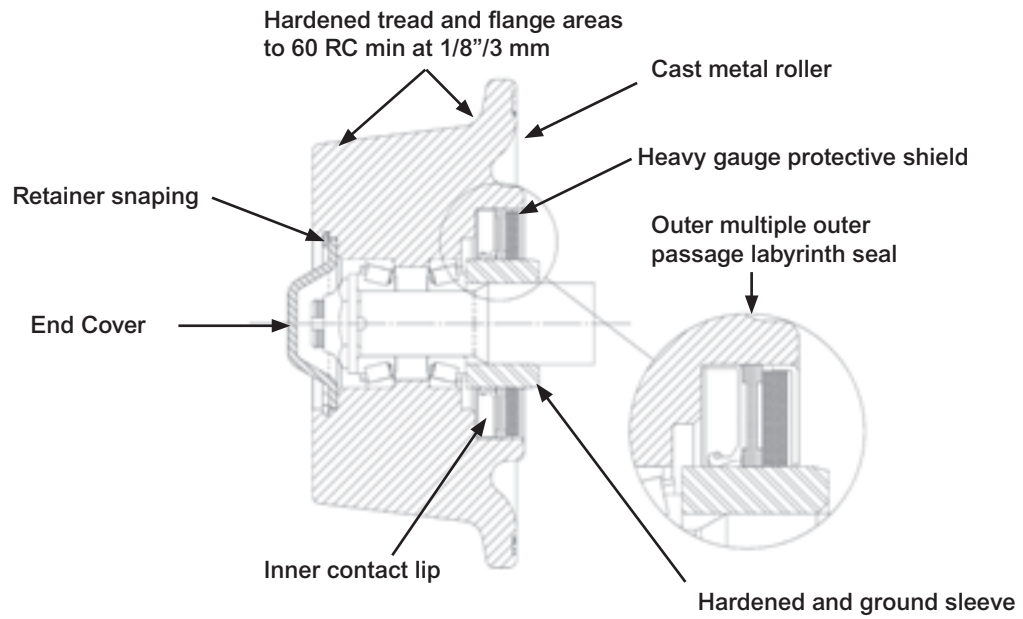
K1 & K17 Attachment



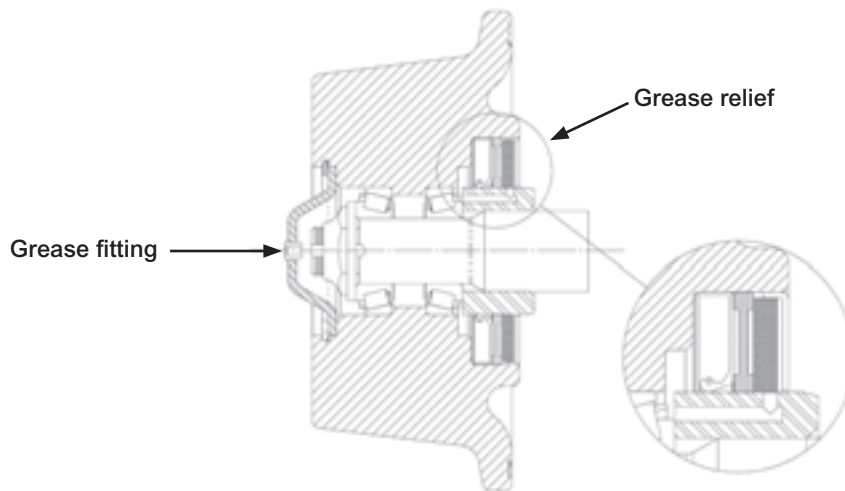
Rexnord Chain Number	Average Pitch	A	B	D		F	H	C	T	Weight
				Bolt Dia	Bolt Hole					
D2124-K1	6.00	4.75	3.50	0.625	0.6875	6.8125	2.5	1.625	0.38	15.8 lbs
	152.4	120.65	88.9	15.9	17.5	173.04	63.5	41.28	9.5	7.2 kg
531-K17	4.00	4.00	2.00	0.500	0.531	5.44	1.5	1.31	0.38	10.6
	101.6	101.6	50.8	12.7	13.5	138.18	38.1	33.27	9.5	4.81 kg

- Dimensions shown are in inches
- Red dimensions are millimeters
- Dimensions are subject to change. Certified drawings are available upon request.

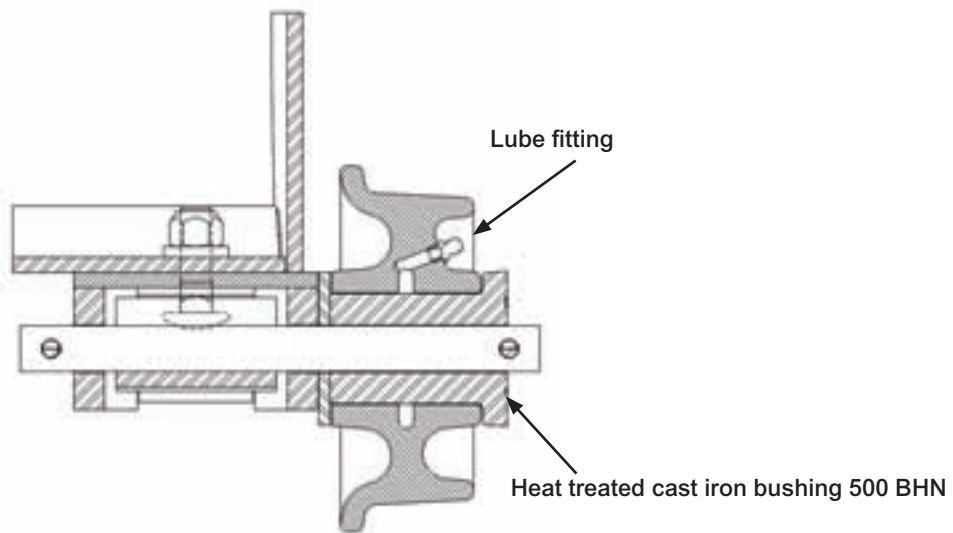
Style 1 Roller Factory Sealed



Style 1A Roller Regreasable



Style 2 Roller



Rexnord Conveying Equipment Product Line

Series 1600-High Performance Chain Elevator

Centrifugal elevators built specifically for severe service.

- 2" (50mm) minus materials

Series 4000-4100- Super Capacity Elevator

Continuous elevators designed for gravity discharge of material.

- 8" (200mm) minus materials

Series 2100-Industrial Duty Continuous Discharge Elevator

Slow speed handling of material.

- 2-4" (50-100mm) sized lumps

Series 1100-Industrial Duty Centrifugal Chain Elevator

Centrifugal elevators designed for general applications.

- 2" (50mm) minus materials

Series 1200- Industrial Duty Centrifugal Belt Elevator

Centrifugal elevators designed to handle abrasive materials for general applications.

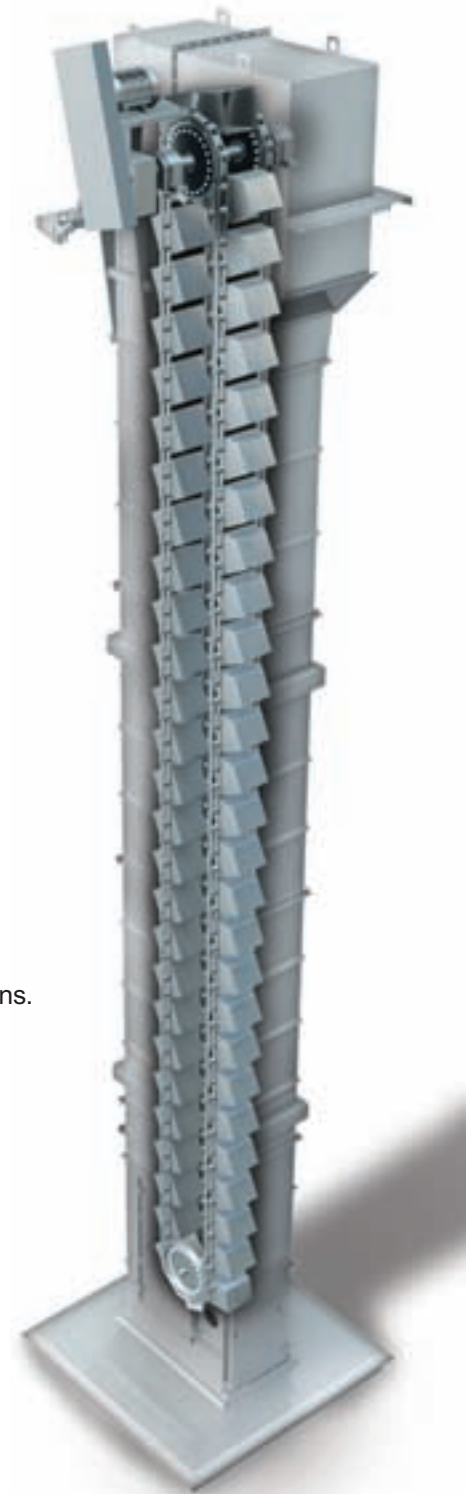
- 2" (50mm) minus materials

Drag Conveyors & Flight Conveyors

Designed to handle a wide range of materials.

Style A, Style B, Style C, and AFT Conveyors

Handle a wide range of material from clinker to hot sinter



World Class Customer Service

For more than 100 years, the dedicated people of Rexnord have delivered excellence in quality and service to our customers around the globe. Rexnord is a trusted name when it comes to providing skillfully engineered products that improve productivity and efficiency for industrial applications worldwide. We are committed to exceeding customer expectations in every area of our business: product design, application engineering, operations, and customer service.

Because of our customer focus, we are able to thoroughly understand the needs of your business and have the resources available to work closely with you to reduce maintenance costs, eliminate redundant inventories and prevent equipment down time.

Rexnord represents the most comprehensive portfolio of power transmission and conveying components in the world with the brands you know and trust.

WORLDWIDE CUSTOMER SERVICE

AUSTRALIA

Rexnord Australia Pty. Ltd.
Picton, New South Wales
Phone: 61-2-4677-3811
Fax: 61-2-4677-3812

Falk-Rexnord Australia Pty. Ltd.
Broadmeadow New South Wales
Phone: 61-2-4962-8000
Fax: 61-2-4962-8001

BRAZIL

Rexnord Correntes Ltda.
Sao Leopoldo - RS
Phone: 55-51-579-8022
Fax: 55-51-579-8029

CANADA

Rexnord Canada Ltd.
Scarborough, Ontario
Phone: 1-416-297-6868
Fax: 1-416-297-6873

CHINA

Rexnord China
Shanghai, China
Phone: 86-21-62701942
Fax: 86-21-62701943

EUROPE

Rexnord NV/SA
Mechelen, Belgium
Phone: 32-15-443881
Fax: 32-15-443860

LATIN AMERICA

Rexnord International, Inc
Milwaukee, Wisconsin
Phone: 1-414-643-2366
Fax: 1-414-643-2525
E-mail: international1@rexnord.com

MEXICO

Mecanica Falk, S. A. de C. V.
Mexico DF, Mexico
Phone: 52-55-9140-3500
Fax: 52-55-9140-3550

SINGAPORE

Rexnord International, Inc
Singapore City, Singapore
Phone: 65-6338-5622
Fax: 65-6338-5422

UNITED STATES

Customer Service
Phone: 866-Rexnord
(866-739-6673)
E-mail: rexnordcs(state)@rexnord.com
Example: rexnordcsohio@rexnord.com

ALL COUNTRIES NOT LISTED ABOVE

Rexnord International, Inc
Milwaukee, Wisconsin
Phone: 1-414-643-2366
Fax: 1-414-643-3222
E-mail: international1@rexnord.com

